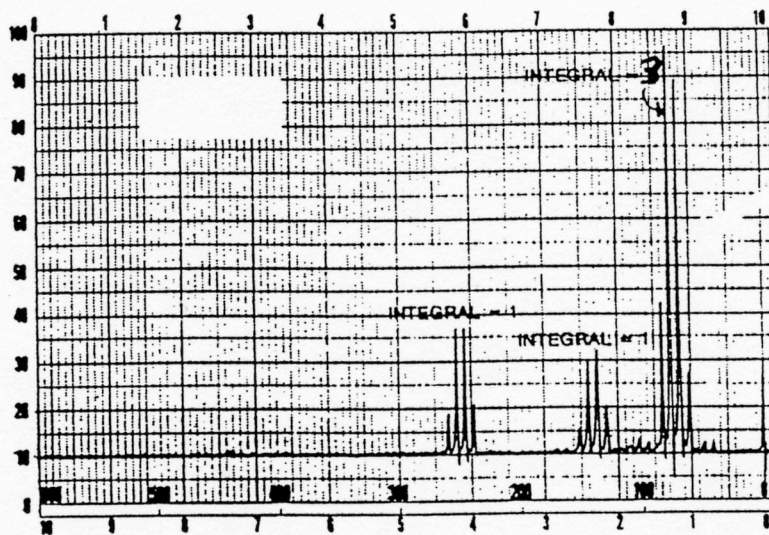
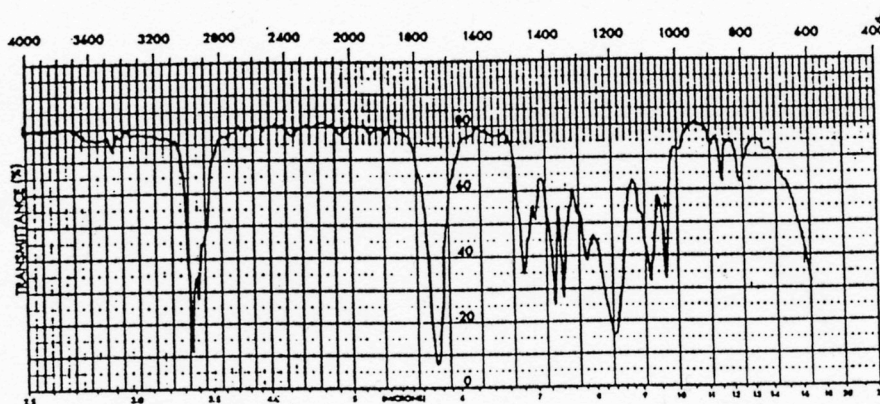
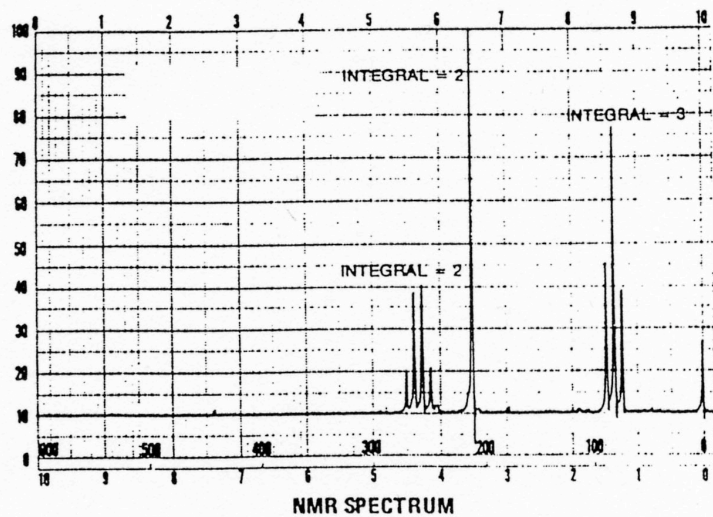
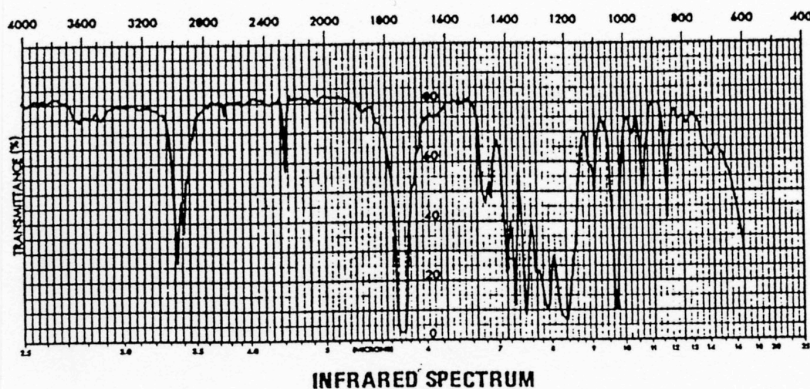
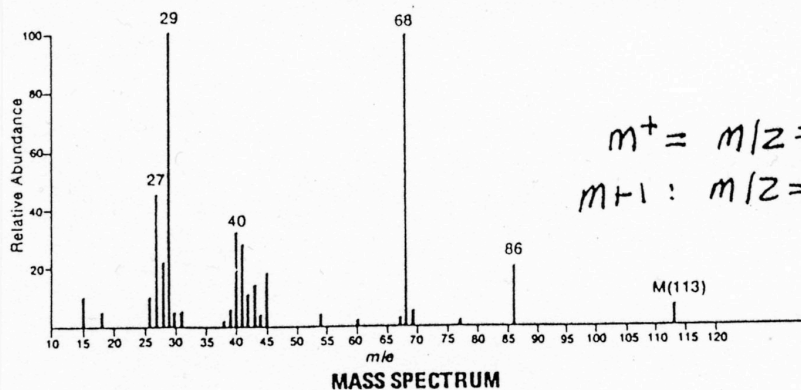


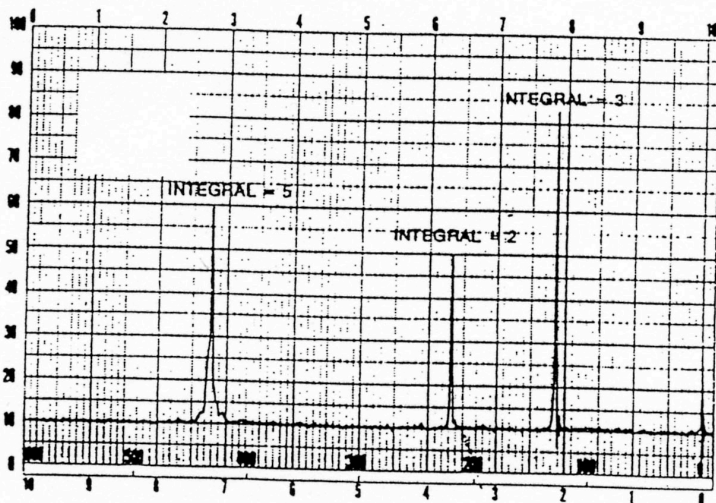
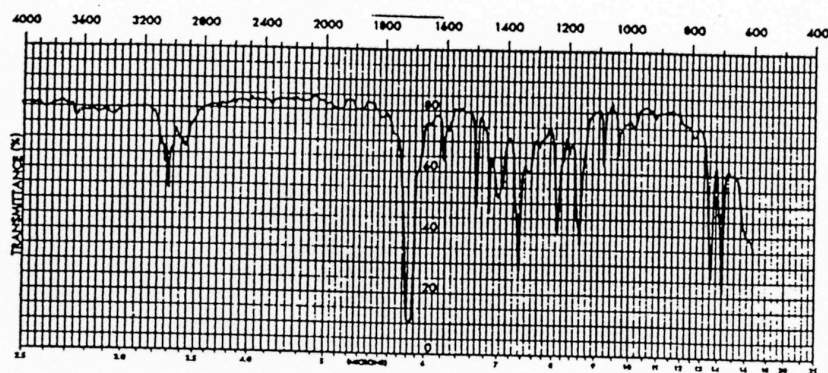
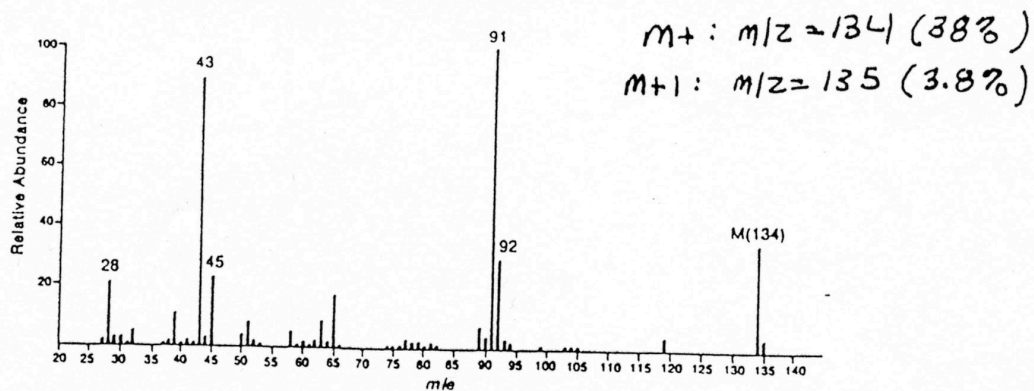
$M^+ : m/z = 102$ (19%)
 $M+1 : m/z = 103$ (1.1%)



^{13}C NMR: 174, 60, 28, 16, 12 ppm



^{13}C : 165, 115, 64, 24, 16 ppm



^{13}C NMR: 215, 135, 130, 128, 124, 52, 28 ppm