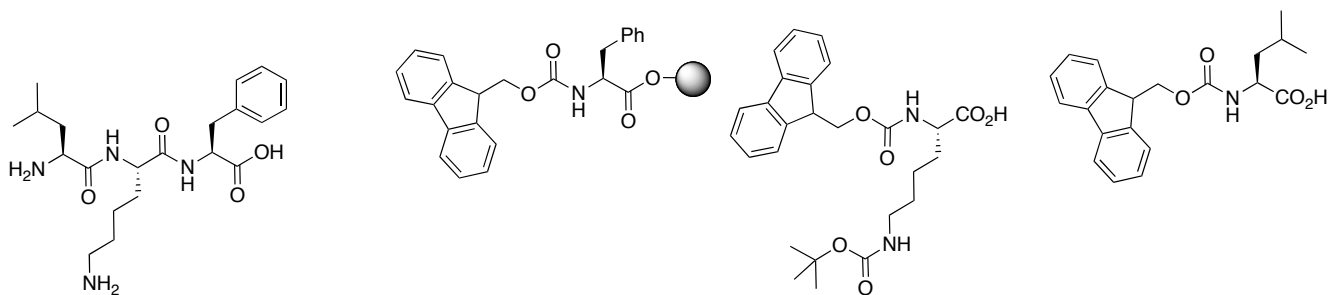
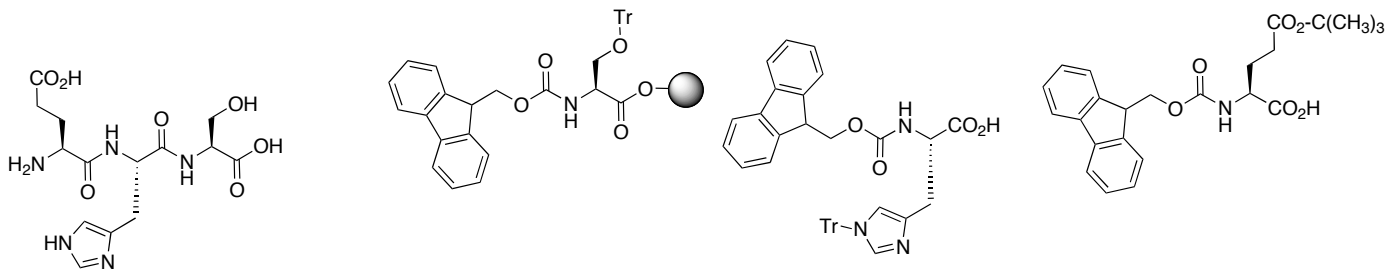


coupling reagent: DCC/HOBT  
 piperidine to remove Fmoc group  
 HF/anisole to remove peptide from solidsupport



coupling reagent: DCC/HOBT  
 piperidine to remove Fmoc group  
 $\text{CF}_3\text{CO}_2\text{H}$ /anisole to remove the BOC group and  $\text{NH}_3$  to remove the peptide from solid support to give the C-terminal amide



coupling reagent: DCC/HOBT  
 piperidine to remove Fmoc group  
 $\text{CF}_3\text{CO}_2\text{H}$ /anisole to remove the sidechain protecting groups;  
 HF/anisole to remove the peptide from solid support

