

# BRET

Office of Career Development



## VIRTUAL ASPIRE OFFERINGS OF THE FORTNIGHT

**[ASPIRE Bistro for PhD Students:  
Maximizing Your Research Efforts](#)**

*Featuring Kathy Gould, PhD, Senior Associate Dean for Biomedical Research Education and Career Development*

Thursday, February 4 • 11:00am • [Zoom registration required.](#)

**[PhD Career Stories: Sylvie Raver, PhD](#)**

*Associate Director at the Milken Institute Center for Strategic Philanthropy*

Friday, February 12 • 10:00am • [Zoom registration required.](#)

**[ASPIRE Cafe for Postdoctoral Fellows:  
NonTenure Faculty Track](#)**

*Featuring a Faculty Panel*

Thursday, February 11 • 11:00am • [Zoom registration required.](#)

## SPECIAL ANNOUNCEMENT

 **PhD & MASTER'S**  
**Virtual Career Expo**

**TALENT WITH ADVANCED DEGREES**

March 3, 2021

Hosted by the Graduate Career Consortium - an international organization supporting the career and professional development of graduate students and postdocs.

Register at [CareerEco.com/Events/GCC](https://CareerEco.com/Events/GCC)

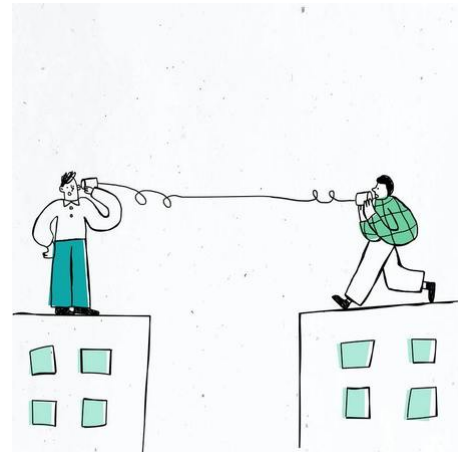
Vanderbilt University is participating in the [Virtual Career Expo for PhD and Master's Students](#) sponsored by the Graduate Career Consortium. The Virtual Career Expo is an

opportunity for graduate students and postdoctoral fellows to interact with employers online via live-chat sessions. Learn which employers are attending and what to expect at the Virtual Career Expo [here](#).

## ANNOUNCEMENTS

Please join the Office of Postdoctoral Affairs and the Biomedical Research Education and Training (BRET) Office along with International Student and Scholar Services and Human Resources for an [information session on the new J1 Aetna Insurance plan](#) on Tuesday, February 2 at 2 p.m.

The [Digital Scholarship and Communications \(DiSC\) Office of the Libraries](#) is offering online beginner lessons in R using RStudio and Python using Jupyter notebooks during the spring semester.



Bring your beverage of choice and join STPF for a virtual reception at the [2021 AAAS Annual Meeting!](#) Network with current and alumni S&T Policy Fellows and others engaged at the intersection of science and policy.

The [Annual Information Session on the Biogen Worldwide Medical PhD Fellowship](#) is scheduled for Thursday, February 18th from 4:00 – 5:00 PM EST and will take place virtually. RSVP to attend and gain an inside perspective on a potential career in industry.

Attend [Choate, Hall & Stewart's 2021 Spring Cocktail Reception and Career Exploration](#). This is a great opportunity to meet the members of the Patent and Intellectual Property department and learn more about a career at Choate.

The next installment of the [NIH OITE mental health series](#) takes place on February 1, 2021 at 1:00 – 3:15 EST. This month we will focus on anxiety.

[The 52nd Annual Midwest Student Biomedical Research Forum \(MSBRF\)](#) will be held virtually on February 27, 2021. Students are encouraged to submit an abstract for this year's forum. This very successful student activity has been co-sponsored by University of Nebraska Medical Center and Creighton University since 1987.

The [Broad Institute of MIT and Harvard](#) is currently accepting applications for a paid summer internship in science writing and communications. Applications are due February 28th.

The New York Academy of Sciences is pleased to announce the continuation of its [Science Writing Associates Program](#), which gives New York metropolitan area graduate students and

postdocs the opportunity to build their writing skills and credentials. Applications due February 5th!

Path to Career Resources! Check out this article featured in *Nature* on [navigating curveball questions in industry interviews](#).

## ASPIRE EVENTS



### [ASPIRE Bistro for PhD Students: Maximizing Your Research Efforts](#)

*Featuring Kathy Gould, PhD, Senior Associate Dean for Biomedical Research Education and Career Development*

Thursday, February 4

11:00am

[Zoom registration required.](#)



### [ASPIRE Cafe for Postdoctoral Fellows: NonTenure Faculty Track](#)

*Featuring a Faculty Panel*

Thursday, February 11

11:00am

[Zoom registration required.](#)



### [PhD Career Stories: Sylvie Raver, PhD](#)

*Associate Director at the Milken Institute Center for Strategic Philanthropy*

Friday, February 12

10:00am

[Zoom registration required.](#)

for PhD Students & Postdocs

### [ASPIRE Job Search Series: Behavioral Interviewing](#)

*Featuring Kim Petrie, PhD, Assistant Dean for Biomedical Career Development, Assistant Professor of Medical Education and Administration*

Thursday, February 18

11:00am

[Zoom registration required.](#)



[ASPIRE Cafe for Postdoctoral Fellows: A Fair Look- How to Review a Paper](#)

Featuring Featuring Kathy Gould, PhD, Senior Associate Dean for Biomedical Research  
Education and Career Development

Thursday, February 25

11:00am

[Zoom registration required.](#)

---

## DEADLINES

[VU Office of Federal Relations Summer 2021 Internship](#) Deadline: **TODAY!** February 1

[National Academies of Sciences, Engineering, and Medicine](#) Deadline: **TODAY!** February 1

[Dannon Gut Microbiome, Yogurt and Probiotics Fellowship Grant](#) Deadline: February 15

[Intelligence Community \(IC\) Postdoctoral Research Fellowship Program \(IC Postdoc Program\)](#) Deadline: February 26

[CCST Science and Technology Policy Fellowship](#) Deadline: March 1

[2021 Academic Lab Management + Leadership Symposium](#) Deadline: March 4

[Pfizer's 2021 Summer Student Worker Program](#) Deadline: March 5

[SFARI Bridge to Independence Award Program](#) Deadline: April 12



---

## JOB OPPORTUNITIES



Follow us our job feed on Twitter! [@VUBRETPhdJobs](#)

If you would like to advertise an open job or postdoc position in the BRET Office of Career Development newsletter, please post the opportunity through our [webform](#) or contact [Kate Stuart](#). We welcome submissions from faculty, alumni, postdocs, students, and the community.

---

**Nashville Opportunities**  
[Postdoctoral Position, Pua Lab, Vanderbilt University Medical Center, Nashville, TN](#)

[Assistant Director, Career Services, Mailman School of Public Health, Columbia University, New York, NY](#)

[Assistant Director, Career Services, Mailman School of Public Health, Columbia University,](#)

[Postdoctoral Position, NIH-funded BRAIN Initiative, @VGamaLab and Bellan Lab, Vanderbilt University, Nashville, TN](#)

[New York, NY](#)

[Assistant Professor in Stem Cell Biology or Regenerative Biology, UC Irvine, Irvine, CA](#)

### **Other Opportunities**

[Postdoctoral Positions, St. Jude Children's Research Hospital, Memphis, TN](#)

[Associate/Assistant Professor, Biochemistry and Molecular Biology, Uniformed Services University of The Health Sciences, Bethesda, MD](#)

[Postdoctoral Position, Protein Folding by Molecular Chaperones, Laboratory of Molecular Biology, National Cancer Institute, Bethesda, MD](#)

[Staff Scientist, Microbial Pathogenesis, Eunice Kennedy Shriver National Institute of Child Health and Human Development, Bethesda, MD](#)

[Postdoctoral Fellow, Vaccine Design and Identification of Therapeutic Targets for Respiratory Viral Infections, The Henry M. Jackson Foundation \(HJF\), Bethesda, MD](#)

[Scientist, Synthetic biology with MPRA focus, facilitated through Propel Careers, New York City, NY](#)

[Postdoctoral Auditory Researcher, U.S. Department of Defense \(DOD\), 711th Human Performance Wing., Wright-Patterson AFB, OH](#)

[Staff Scientist, Developmental Neurogenetics, National Institute of Mental Health, Intramural Research Program, Bethesda, MD](#)

[Postdoctoral Positions at Cincinnati Children's Hospital Medical Center](#)

[Staff Scientist, Molecular and Cellular Neuroendocrinology, The Division of Intramural Research \(DIR\) at the Eunice Kennedy Shriver National Institute of Child Health and Human Development \(NICHD\), Bethesda, MD](#)

[Postdoctoral Position, Cellular Stress Response in Health and Disease, National Heart, Lung and Blood Institute, Bethesda, MD](#)

[T32 Funded Postdoc, Skin Biology, Johns Hopkins University School of Medicine, Baltimore, MD](#)

[Staff Scientist, In Vitro and In Vivo Genetic Toxicology, the Division of the National Toxicology Program \(DNTP\), Predictive Toxicology Branch \(PTB\), National Institute of Environmental Health Sciences \(NIEHS\), NIH, Research Triangle Park, NC](#)

[Postdoctoral Position, Structural and Biochemical Mechanisms of RNA Regulation, Dr. Traci Hall Lab, NIEHS/NIH, Research Triangle Park, NC](#)

[Auditory Researcher, U.S. Department of Defense \(DOD\), 711th Human Performance Wing., Wright-Patterson AFB, OH](#)

[Postdoctoral Position, Genomics and Computational Molecular Biology, Laboratory of Dr. Claudia Herrera, Department of Tropical Medicine, Tulane University, New Orleans, LA](#)

[Postdoctoral Position, Mosquito Metabolism, Laboratory of Dr. Scaraffia, Department of Tropical Medicine, School of Public Health, Tulane University, New Orleans, LA](#)

[Disease Surveillance Fellowship, Centers for Disease Control and Prevention \(CDC\), Atlanta, GA](#)

[Applied Research and Translation and Data Informatics Fellowship, Atlanta, Georgia](#)

[HIV Treatment and Prevention Fellowship, Centers for Disease Control and Prevention \(CDC\), Atlanta, GA](#)

[Program Evaluation Fellowship, Centers for Disease Control and Prevention \(CDC\), Atlanta, GA](#)

[Public Health Fellowship, Centers for Disease Control and Prevention \(CDC\), Atlanta, GA](#)

[TENURE-TRACK BIOCHEMIST FACULTY POSITION - Detroit, Michigan - Wayne State University School of Medicine](#)

[EACE Epidemiology & Surveillance Research Fellowship, U.S. Department of Defense \(DOD\), The Extremity Trauma and Amputation Center of Excellence \(EACE\), Bethesda, MD](#)

[EACE Musculoskeletal Injury Research Fellow, U.S. Department of Defense \(DOD\), The Extremity Trauma and Amputation Center of](#)

[Assistant Clinical Investigator, Neurogenetics, National Institute of Neurological Disorders and Stroke, Bethesda, MD](#)

[Biopharma Analyst, BioCentury, remote](#)

[Program Director, Cancer Treatment and Diagnosis, National Cancer Institute, Bethesda, MD](#)

[Program Director, Synthetic Biological Systems, National Institute of Biomedical Imaging and Bioengineering \(NIBIB\), Bethesda, MD](#)

[Diversity and Inclusion Program Manager, The Office of Diversity and Inclusion, University of Illinois Chicago, IL](#)

[Full-time and Freelance Science Editor positions, Science Feedback, Paris, France](#)

[Science Communications Specialist, Natureserve, remote](#)

[Senior Editor, LabX Media Group, remote](#)

[Assistant Editor, LabX Media Group, remote](#)

[Assistant Health and Medicine Editor, The Conversation, Atlanta, GA or Boston, MA, or NY](#)

[Science Writer, Communications and Marketing, Texas Biomedical Research Institute, San Antonio, TX](#)

[Custom Content Writer/Editor, GenomeWeb, remote or NY](#)

[Excellence \(EACE\), Bethesda, MD](#)

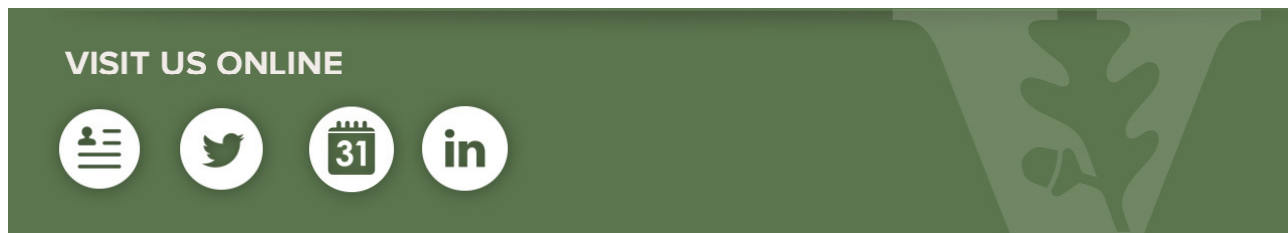
[Neuroscience Postdoctoral Position, Section of Neural Circuits, National Institute of Alcohol Abuse and Alcoholism, Bethesda, MD](#)

[Scientist, Cell Biology Research & Development, Thermo Fisher Scientific, Frederick, MD](#)  
[Senior Scientist, Formulation Development, Pfizer, St. Louis, MO](#)

[Assistant Professor of Molecular and Cellular Biology - Marietta, Georgia - Kennesaw State University](#)

[Associate Director of the Writing and Public Speaking Center, University of Montana, Missoula, MT](#)

[Engagement Editor, The Chronicle of Higher Education and The Chronicle of Philanthropy, Washington, D.C.](#)



Share this email:



emma<sup>®</sup>

[Manage](#) your preferences | [Opt out](#) using TrueRemove™  
Got this as a forward? [Sign up](#) to receive our future emails.  
View this email [online](#).

340 Light Hall 2215 Garland Avenue  
Nashville, TN | 37232-0301 US

This email was sent to [angela.zito@vanderbilt.edu](mailto:angela.zito@vanderbilt.edu).  
*To continue receiving our emails, add us to your address book.*