

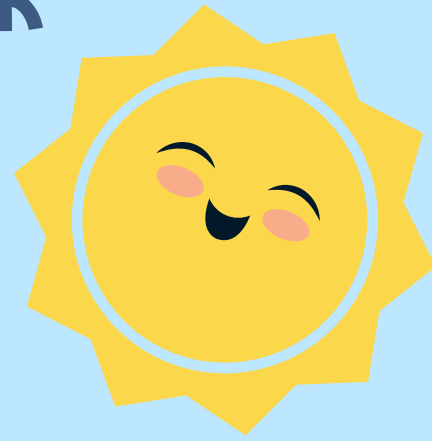


MY CHILD HAS BEEN EVALUATED AND IS ELIGIBLE FOR SERVICES. NOW WHAT?

Learning your child is eligible for special education or early intervention services can feel overwhelming and confusing.

This guide highlights the different ways services may be delivered and provides a brief overview of what you can expect when you learn your child is eligible for services.

SO YOU'VE FOUND OUT YOUR CHILD IS ELIGIBLE BY...



Evaluation through the local school district
or early intervention provider

OR/AND

Evaluation through a medical provider
(developmental pediatrician or child psychologist)

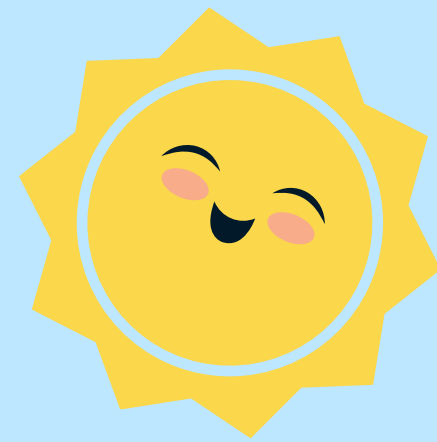
OR/AND

Evaluation through a private service provider
(ex: speech pathologist, physical therapist, etc.)

Procedures often look
different from state
to state.

The Individuals with Disabilities Education Act (IDEA) mandates that individuals with disabilities be provided with a Free Appropriate Public Education (FAPE) from birth through age 21. While the continuum of services may vary in format across states, school systems, and early intervention agencies, it must align with IDEA regulations. Additional service options might also be available to you through your insurance or private pay.

THE CONNECTION BETWEEN EVALUATION AND SERVICES



IF YOUR EVALUATION WAS PROVIDED BY...

**The Early Intervention Agency or
Local School System**

then...

Services are provided by your state's early intervention agency or your local school system.

Services are outlined in an Individualized Family Service Plan (IFSP) or Individualized Education Program (IEP) depending on the age of your child and state.

IEP services are provided at no cost to the family. IFSP services are provided at low or not cost, depending on your state of residence.

A Medical or Service Provider

then...

Services are provided through private agencies or medical entities. You may be referred to in-network or community service providers..

Services will be recommended and outlined in a medical treatment plan. These services are not connected to an IFSP or IEP.

Coverage for services varies based on your insurance policy. These services are also available for private pay.



Families can seek evaluation and services from more than one source.

FOR CHILDREN UNDER 3

IDEA, Part C: Early
Intervention



If your child is under 3 and eligible for early intervention services, an IFSP will be developed by you and your family's IFSP team.

An IFSP focuses on services for your child and supports for your family (recognizing that when families have the support they need, they can more readily support the child).

An IFSP is a plan with goals designed to support your child's development in the natural environment (where children 3 or younger without disabilities would typically spend their time). Natural environments can include homes, childcare programs, or community locations like libraries or grocery stores. Your early interventionist will use family and caregiver coaching to support you in using strategies to enhance your child's development.



FOR CHILDREN 3 AND OLDER

IDEA, Part B: Services for
School-Aged Children



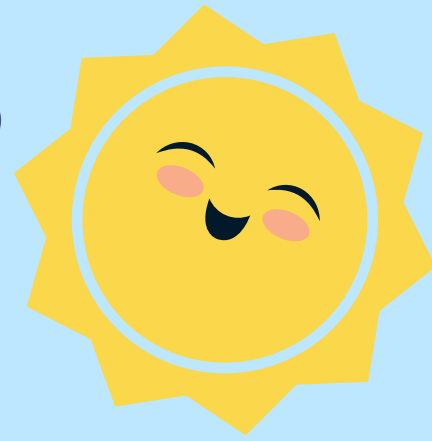
If your child is 3 and older and eligible for special education services, an IEP will be developed by you and your child's IEP team.

An IEP is a plan with goals informed by your child's individual educational needs and designed to promote their academic success in the school setting.

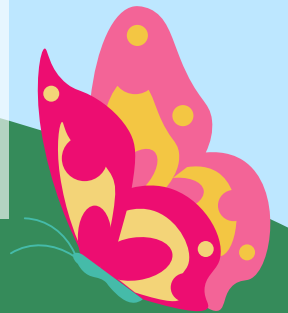
Any special education services your child receives are required to be delivered in the least restrictive environment (LRE).



OTHER SERVICE POSSIBILITIES



Based on the results of your child's evaluation, you may be referred to additional service options outside of the school setting.



Additional services may be provided by an occupational therapist (OT), physical therapist (PT), speech-language pathologist (SLP), behavior analyst (BCBA), or medical provider .

Some of these service options may be covered by insurance with a diagnosis from a community provider, while others may be available for private pay.



RESOURCES



[Medicaid Provider Directory](#)

[Early Childhood Contacts by State](#)

[Occupational Therapy Locator](#)

[Physical Therapy Locator](#)

[Speech-Language Therapy Locator](#)

