

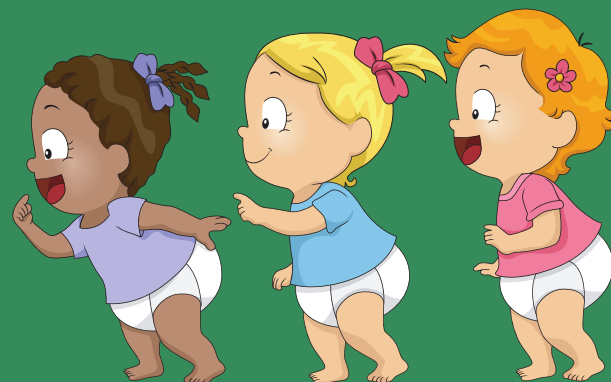
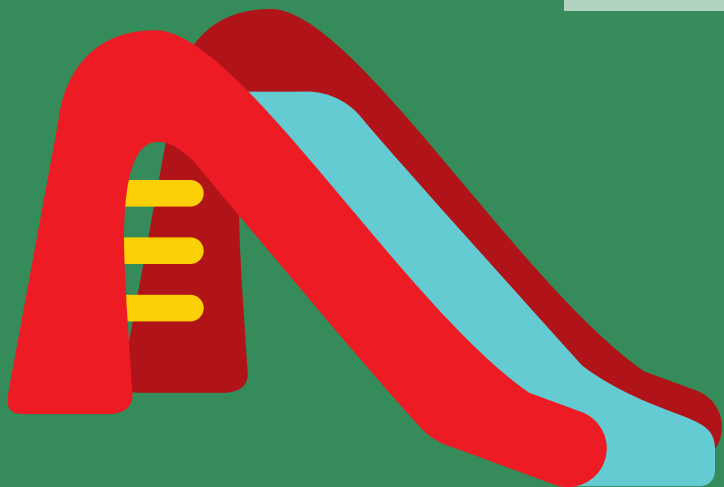


WHAT IS AN INDIVIDUALIZED FAMILY SERVICE PLAN (IFSP)?

There are many possible avenues to receiving early intervention services. Once your child is identified as eligible for services, the process of developing an IFSP will begin. This guide will provide a comprehensive overview of IFSPs and describe that process.

THE LAW REGARDING IFSPs

Part C (Early Intervention) of the Individuals with Disabilities Education Act (IDEA) was established in 1986 (PL 99-457). This section of IDEA is a federal grant program that assists states in providing early intervention services to eligible children from birth to age 3 to enhance their development. The IFSP focuses on services for your child and supports for your family, recognizing that when families have the support they need, they can more readily support the child.



BARTON LAB
CONTACT: BARTONLABVU@GMAIL.COM

COMPONENTS OF AN IFSP

IFSP services should be provided in the natural environment "to the maximum extent possible." Natural environments include the home or other settings relevant to a child's life (e.g., childcare program).

Services are free or provided at low cost to families.

IFSPs should include:

✓ Your child's present levels of needs across domains (physical, emotional, communication, etc.)

✓ Expected goals of early intervention

✓ Specific services the child will receive

✓ Who is in charge of coordinating services

✓ Information regarding family priorities and concerns

✓ When, where, how often, and duration of services provided

✓ Statement of cost of services (if any)

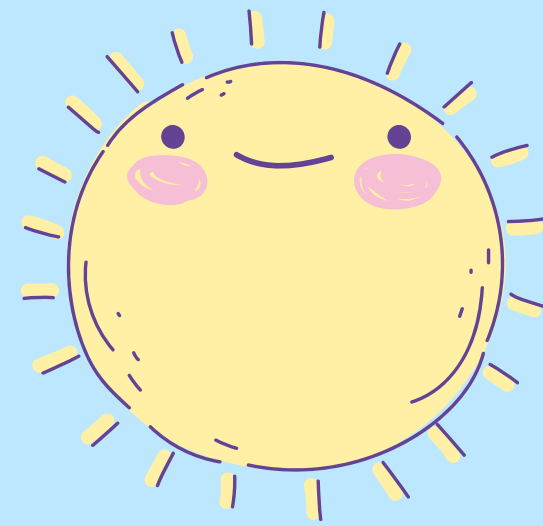
✓ A plan for the transition of services before the child turns 3

FAMILY INVOLVEMENT



The most important contributors to the IFSP are family members. The plan should be tailored to suit a family's priorities in supporting their child's development.

WHO ELSE IS INVOLVED IN DEVELOPING THE IFSP?



**Service
Coordinator:**

A professional who maintains the IFSP and ensures service delivery

Evaluator:

The person who conducted your child's evaluation may be involved to present findings from evaluation

Service providers:

Professionals who provide the services recommended for your child may give recommendations for scope and form of service

Advocate:

Parent may request that a person outside of the family or a professional advocate accompany them to meetings to assist in advocating for the child's needs

And more!

Other stakeholders may be involved in IFSP development, such as childcare professionals or other caregivers who spend significant time with the child

BARTON LAB

CONTACT: BARTONLABVU@GMAIL.COM

WHAT SERVICES ARE PROVIDED?

A variety of services and supports may be identified for your child and family, including, but not limited to:



BARTON LAB
CONTACT: BARTONLABVU@GMAIL.COM

WHAT DO SERVICES LOOK LIKE?

One or more professionals may visit your home or other environment natural to your child on a regularly scheduled basis.



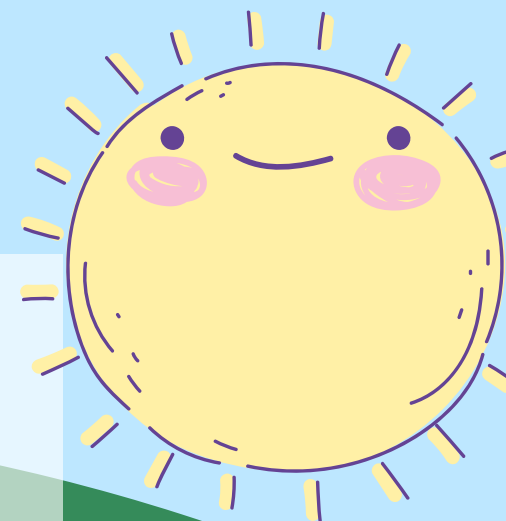
Sessions are likely to involve a professional working with your family to support you in enhancing your child's learning and development. Professionals may also work directly with your child.

Sessions with your child may just look like playtime! Each component of your child's service plan should be designed to address areas of concern for your individual child while maintaining an age-appropriate format.



BARTON LAB
CONTACT: BARTONLABVU@GMAIL.COM

HOW IS AN IFSP MAINTAINED?



Once services are presented and discussed, families can either consent to the plan, decline the plan, or consent to parts of the plan (there are other processes regarding disagreements and what steps to take, which will be outlined in a future post).

Families will then be connected with any services that will begin in the near future.

The IFSP team will meet every six months to review on the child's progress, and determine whether updates or changes need to be made to the plan. The plan must be updated every year. Typically, before the child's 3rd birthday, the child's services will transfer over to an Individualized Education Program (IEP). Some states might offer an option to maintain the IFSP until age 4 or 5.



BARTON LAB
CONTACT: BARTONLABVU@GMAIL.COM

RESOURCES

[ECTA Center– Part C of IDEA Overview and Resources](#)

[Part C of IDEA Regulations](#)

[Q&A for Service Delivery During COVID–19 Pandemic](#)



BARTON LAB
CONTACT: BARTONLABVU@GMAIL.COM