

THE BARTON BUNCH

JEN BANCROFT, M.S., CCC-SLP

**HERE'S THE STORY OF A
LOVELY RESEARCHER...**

Jen!



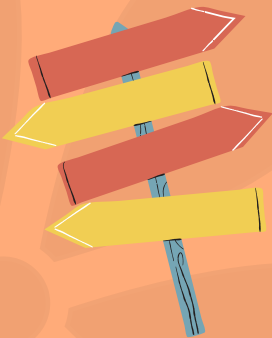
THE BARTON BUNCH

JEN BANCROFT, M.S., CCC-SLP

Meet Jen, a 4th year
doctoral student!

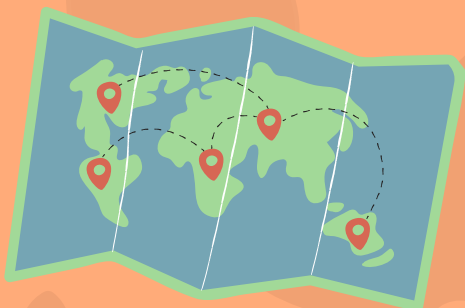


She is a speech and language
pathologist.



She has lived in four
states: CA, FL, IL, and TN.

She enrolled in the doc
program when she was 50.



She and her husband have
four grown daughters, and
she loves to travel!!

THE BARTON BUNCH

JEN BANCROFT, M.S., CCC-SLP

Her primary research interests include...



Play interventions for children with disabilities, and interventions to promote the development of social-emotional skills in children with disabilities.

What do you hope to do after you graduate from Vanderbilt?

I hope to teach at a university in the fields of special education and speech language pathology.

THE BARTON BUNCH

JEN BANCROFT, M.S., CCC-SLP

What have you been involved with in Barton Lab?

"Erin has been very supportive of my goal to teach at the college level. Often, a significant part of my lab hours are used to TA for her classes. This is the fourth time that I have been Erin's TA. Learning to teach under her mentorship has been an exceptional opportunity."

