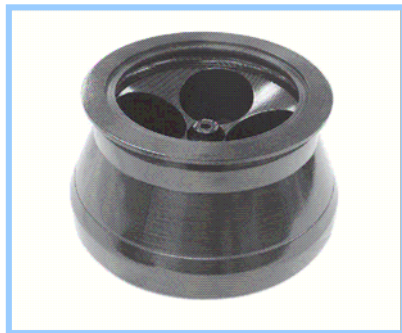


SORVALL® SUPERSPEED CENTRIFUGES

SLC-4000 - SUPER-LITE® Composite Rotor



For use in: Evolution™ RC, RC-6™, RC-5C Plus, RC-5C, RC-5B Plus, and RC-5B

SUPER-LITE® Composite Rotor
 4-Places, 1,000 ml
 Cavity Dimensions: 98 X 175 mm
 Fixed Angle: 22°
 Maximum Speed: see below
 K Factor: 5114
 Rotor Mass: 14.1 kg
 Autoclavable: Yes

	RCF (x g)	R (cm)
Max.	15,182	16.78
Min.	1,374	2.55

	RC-6/-5 Series	Evolution RC
Max. RPM	7,000	9,000
Max. RCF	9,184	15,182

Catalog No. 76980	Catalog No. 76990	Catalog No. 74814
SLC-4000 Rotor Rotor Cover Assembly 76991 Cover O-ring 76984 Rotor Manual 76983 Rotor Extractor Tool 76985 Vacuum Grease 65937 Lubricant 61556 Polycarbonate Bottles (2 pkgs., 2/pkg.) 76964 Sealing Assembly (2 pkgs., 2/pkg.) 76960 Gyro Seal Cover 50414	SLC-4000 Rotor Rotor Cover Assembly 76991 Cover O-ring 76984 Rotor Manual 76983 Rotor Extractor Tool 76985 Vacuum Grease 65937 Lubricant 61556 Polypropylene Bottles (2 pkgs., 2/pkg.) 76968 Sealing Assemblies (2 pkgs., 2/pkg.) 76976 Gyro Seal Cover 50414	SLC-4000 Rotor Rotor Cover Assembly 76991 Cover O-ring 76984 Rotor Manual 76983 Rotor Extractor Tool 76985 Vacuum Grease 65937 Lubricant 61556 Wide-Mouth Polypropylene Bottle (2 pkgs., 2/pkg.) 74812 Sealing Assemblies (2 pkgs., 2/pkg.) 74813 Gyro Seal Cover 50414

	Accessories:
Software Update Kit for RC-5C 12814 Software Update Kit for RC-5C Plus ¹ 12996	Software Update Kit for RC-5C Plus ² 12229 Rotor Lid Refurbishment Kit 76986

Tubes and Adapters

CAPACITY (ML)		DESCRIPTION	MAX. SPEED (RPM)	TUBE DIMENSIONS (MM)	TUBE CAT. NO. (QTY/PKG)	SEALING ASSEMBLY		ADAPTER REQ'D		NOTES
NOMINAL	FILL					CAT. NO. (QTY/PKG)	DESCRIPTION	CAT. NO. (QTY/PKG)	NO. OF PLACES	
1,000	930	Polycarbonate Oak Ridge Bottle	9,000	98 x 175	76964 (2)	76960 (2)	Polyetherimide Sealing			Replacement O-rings (24) (76997)
1,000	1,000	Polypropylene Bottle	8,000	98 x 175	76968 (2)	76976 (2)	Polyetherimide Sealing			Replacement O-rings (24) (76997)
1,000	900	Wide-Mouth Polypropylene Bottles	9,000	97 x 156	74812 (2)	74813 (2)	Polypropylene Sealing			
500		Conical Polypropylene Corning® Tissue Culture Bottle		96 x 146	431123³	Included with Tubes	Polypropylene Plugs	431124³	1	
500	425	Polycarbonate Oak Ridge Bottle	9,000	70 x 160	03944 (6)	03280 (12)	Polypropylene Sealing	41003 (1)	1	Non-sealing caps available (12) (03928)
500	425	Polypropylene Oak Ridge Bottle	9,000	70 x 160	03943 (6)	03280 (12)	Polypropylene Sealing	41003 (1)	1	Non-sealing caps available (12) (03928)

- (1) Use for most instruments S/N 9700321 and up. Consult your Sales or Service Representative.
- (2) Use for instruments up to S/N 9700321
- (3) Available from Corning® CoStar. In U.S. call 800-492-1110.

All trademarks are the property of their respective owners.

TO ORDER, CALL 1-800-522- SPIN (7746)

SORVALL® SUPERSPEED CENTRIFUGES

Tubes and Adapters Continued for SLC-4000 Rotor

CAPACITY (ML)		DESCRIPTION	MAX. SPEED (RPM)	TUBE DIMENSIONS (MM)	TUBE CAT. NO. (QTY/PKG)	SEALING ASSEMBLY		ADAPTER REQ'D		NOTES
NOMINAL	FILL					CAT NO. (QTY/PKG)	DESCRIPTION	CAT. NO. (QTY/PKG)	NO. OF PLACES	
500	480	Polypropylene DRY-SPIN™ Bottle	9,000	70 x 190	06829 (6)	Included with Tubes	Polypropylene Sealing	41003 (1)	1	
250	260	Polycarbonate DRY-SPIN™ Bottle	9,000	61 x 146	03098 (12)	Included with Tubes	Polypropylene Sealing	41003 (1) & 41002 (1)	1	Replacement Caps (12) (06841)
250	250	Polypropylene DRY-SPIN™ Bottle	9,000	61 x 146	03069 (12)	Included with Tubes	Polypropylene Sealing	41003 (1) & 41002 (1)	1	Replacement O-ring sealing assembly (24) (03545)
250	260	Polypropylene Oak Ridge Bottle	9,000	61 x 124	03937 (12)	03278 (12)	Polypropylene Sealing	41003 (1) & 41002 (1)	1	Non-sealing caps available (12) (03927)
250	240	Polycarbonate Oak Ridge Bottle	9,000	61 x 124	03939 (12)	03278 (12)	Polypropylene Sealing	41003 (1) & 41002 (1)	1	Non-sealing caps available (12) (03927)
250		Conical Polypropylene Corning® Tissue Culture Bottle		60 x 177	430776 ³			41003 (1), 41002 (1), & 430236 ³	1	All 3 adapters required.
200	200	Conical Polypropylene Nunc™ Tissue Culture Bottle	6,300	60 x 135	03094	Included with Tubes	Polypropylene Non-Sealing	41003 (1), 41002 (1), & 03095 (1)	1	All 3 adapters required.
50	41	Polypropylene Oak Ridge Bottle	9,000	28 x 103	03530 (25)	03535 (25)	Polypropylene Sealing	00894 (1)	5	Non-sealing caps available (12) (03926)
50	38	Polycarbonate Oak Ridge Bottle	9,000	28 x 103	03480 (25)	03535 (25)	Polypropylene Sealing	00894 (1)	5	Non-sealing caps available (12) (03926)

- (1) Use for most instruments S/N 9700321 and up. Consult your Sales or Service Representative.
- (2) Use for instruments up to S/N 9700321
- (3) Available from Corning® CoStar. In U.S. call 800-492-1110.

All trademarks are the property of their respective owners.

TO ORDER, CALL 1-800-522- SPIN (7746)