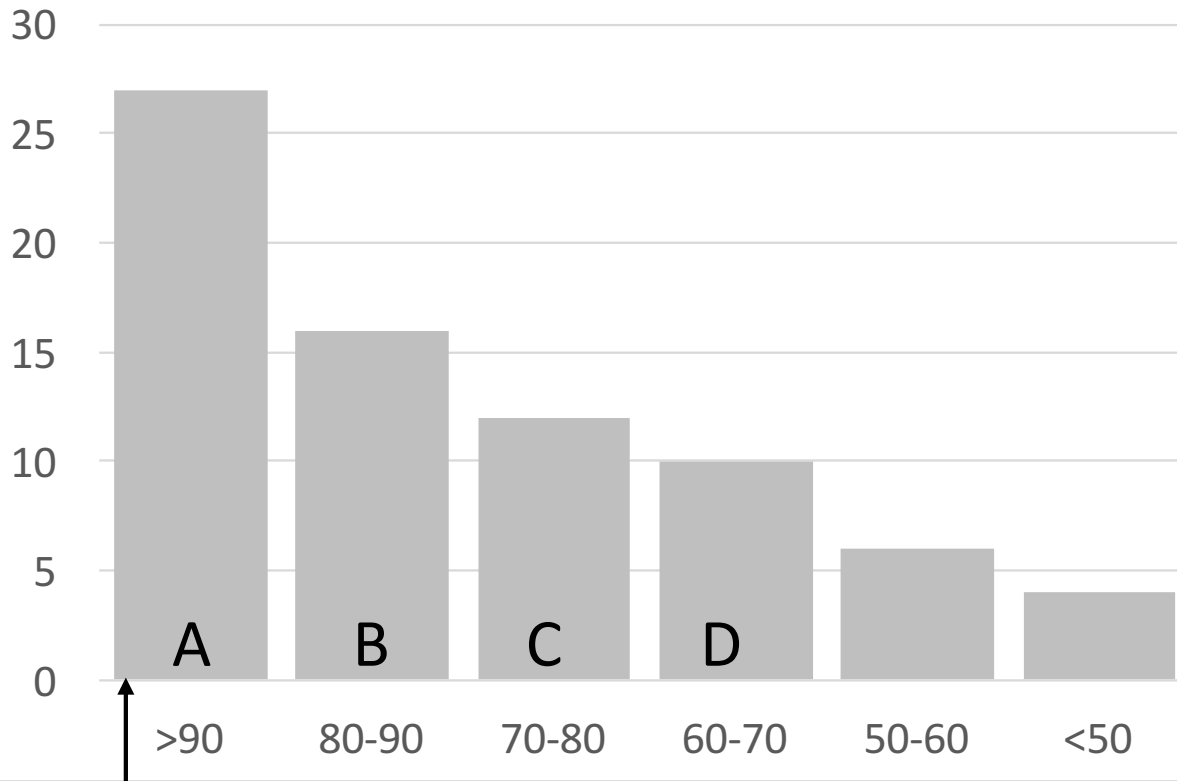


Exam 2 Avg = 78.9 +/- 15.7



Includes 5 students  
who scored  $\geq 100$

Don't forget that (1) homework/participation counts 20% and should pull up everyone's grades and (2) you get to drop your lowest midterm and replace with grade on final exam.

### Breakdown

Mult.Choice: 79%  $\pm$  13%

Q1	4.0 of 5	(80%)
Q2	4.4 of 5	(88%)
Q3	4.4 of 5	(88%)
Q4	4.1 of 5	(82%)
Q5	5.0 of 5	(100%)
Q6	4.4 of 4	(88%)
Q7	8.3 of 16	(52%)
Q8	7.1 of 8	(89%)
Q9	10.7 of 12	(90%)

Open-ended: 70%  $\pm$  23%

Q10	12.5 of 20	(63%)
Q11	6.4 of 8	(80%)
Q12	7.8 of 10	(78%)