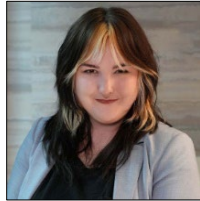


WOMEN'S HEALTH GENDER-RELATED NURSE PRACTITIONER (WHGRNP)



Shaunna Parker, MSN, WHNP-BC
 Director, Women's Health Gender-Related Nurse Practitioner Specialty
 603-A Godchaux Hall
 Phone: 615.343.5408
 E-mail: shaunna.parker@vanderbilt.edu



Haley Bush
 Program Manager
 319B Godchaux Hall
 Phone: 615.343.0587
 E-mail: haley.bush@vanderbilt.edu

Women's Health Gender-Related Nurse Practitioner Curriculum Plan and Required Hours

<i>Semester</i>	<i>Course Number and Name</i>		<i>Credit Hours</i>	<i>Didactic Clock Hours</i>	<i>Seminar Clock Hours</i>	<i>Clinical Clock Hours</i>	<i>Lab Clock Hours</i>	<i>Total Clock Hours</i>
Fall	NURS 6013	Advanced Health Assessment and Clinical Reasoning	2	28				28
	NURS 6014	Advanced Health Assessment Lab	1				28	28
	NURS 6024	Advanced Pharmacology	3	42				42
	NURS 6034	Adult Gerontology Primary Care I	3	42				42
	NURS 6045	Professional Formation 1: Roles and Contexts for Advanced Nursing Practice	1	14				14
	NURS 7305	Advanced Health Assessment Applications for the WHGRNP	1				28	28
	NURS 7310	Women's & Gender-Related Health for Advanced Practice Nursing I	3	42				42
	Semester Total			14	168	0	0	56
Spring	NURS 6022	Advanced Physiology and Pathophysiology	4	56				56
	NURS 6055	Professional Formation 2: Application of Evidence in Healthcare Environments	3	42				42
	NURS 7315	Practicum in Women's & Gender-Related Health	4			280		280
	NURS 7320	Women's & Gender-Related Health for Advanced Practice Nursing II	3	42				42
	Semester Total			14	140	0	280	0
Summer	NURS 6031	Advanced Practice Nursing in Primary Care of the Adolescent	1	14				14
	NURS 6065	Professional Formation 3: Leading Collaborative Change: Improving Delivery of Healthcare to Patients and Populations	4	56				56
	NURS 6075	Role Transition for Advanced Practice Nursing	1	14				14
	NURS 7330	Women's & Gender-Related Health Issues	1	14				14
	NURS 7395	Preceptorship in Women's & Gender-Related Health	5			350		350
	Semester Total			12	98	0	350	0
Program Total			40	406	0	630	56	1092

Women's Health Gender-Related Nurse Practitioner 2-Year, Part-Time Curriculum Plan

<i>Semester</i>	<i>Course Number and Name</i>		<i>Credit Hours</i>
Fall 1	NURS 6013	Advanced Health Assessment and Clinical Reasoning	2
	NURS 6024	Advanced Pharmacology	3
	NURS 6045	Professional Formation 1: Roles and Contexts for Advanced Nursing Practice	1
Spring 1	NURS 6022	Advanced Physiology and Pathophysiology	4
	NURS 6055	Professional Formation 2: Application of Evidence in Healthcare Environments	3
Summer 1	NURS 6065	Professional Formation 3: Leading Collaborative Change: Improving Delivery of Healthcare to Patients and Populations	4
	NURS 6075	Role Transition for Advanced Practice Nursing	1
	NURS 7330	Women's & Gender-Related Health Issues	1
Fall 2	NURS 6014	Advanced Health Assessment Lab	1
	NURS 6034	Adult Gerontology Primary Care I	3
	NURS 7305	Advanced Health Assessment Applications for the WHGRNP	1
	NURS 7310	Women's & Gender-Related Health for Advanced Practice Nursing I	3
Spring 2	NURS 7315	Practicum in Women's & Gender-Related Health	4
	NURS 7320	Women's & Gender-Related Health for Advanced Practice Nursing II	3
Summer 2	NURS 6031	Advanced Practice Nursing in Primary Care of the Adolescent	1
	NURS 7395	Preceptorship in Women's & Gender-Related Health	5
Total Hours			40

Women's Health Gender-Related Nurse Practitioner 3-Year, Part-Time Curriculum Plan: VUMC Employees Only

<i>Semester</i>	<i>Course Number and Name</i>		<i>Credit Hours</i>
Fall 1	NURS 6045	Professional Formation 1: Roles and Contexts for Advanced Nursing Practice	1
Spring 1	NURS 6055	Professional Formation 2: Application of Evidence in Healthcare Environments	3
Summer 1	NURS 6065	Professional Formation 3: Leading Collaborative Change: Improving Delivery of Healthcare to Patients and Populations	4
Fall 2	NURS 6013	Advanced Health Assessment and Clinical Reasoning	2
	NURS 6024	Advanced Pharmacology	3
Spring 2	NURS 6022	Advanced Physiology and Pathophysiology	4
Summer 2	NURS 6031	Advanced Practice Nursing in Primary Care of the Adolescent	1
	NURS 6075	Role Transition for Advanced Practice Nursing	1
	NURS 7330	Women's & Gender-Related Health Issues	1
Fall 3	NURS 6014	Advanced Health Assessment Lab	1
	NURS 6034	Adult Gerontology Primary Care I	3

	NURS 7305	Advanced Health Assessment Applications for the WHGRNP	1
	NURS 7310	Women's & Gender-Related Health for Advanced Practice Nursing I	3
Spring 3			
	NURS 7315	Practicum in Women's & Gender-Related Health	4
	NURS 7320	Women's & Gender-Related Health for Advanced Practice Nursing II	3
Summer 3			
	NURS 7395	Preceptorship in Women's & Gender-Related Health	5
Total Hours			40

Women's Health Gender-Related Nurse Practitioner Sample Curriculum Plan for Post Master's Certificate

Semester	Course Number and Name		Credit Hours
Fall	NURS 6013	Advanced Health Assessment and Clinical Reasoning	2
	NURS 6014	Advanced Health Assessment Lab	1
	NURS 6024	Advanced Pharmacology	3
	NURS 6034	Adult Gerontology Primary Care I	3
	NURS 7305	Advanced Health Assessment Applications for the WHGRNP	1
	NURS 7310	Women's & Gender-Related Health for Advanced Practice Nursing I	3
Spring			
	NURS 6022	Advanced Physiology and Pathophysiology	4
	NURS 7315	Practicum in Women's & Gender-Related Health	4
	NURS 7320	Women's & Gender-Related Health for Advanced Practice Nursing II	3
Summer			
	NURS 6031	Advanced Practice Nursing in Primary Care of the Adolescent	1
	NURS 7330	Women's & Gender-Related Health Issues	1
	NURS 7395	Preceptorship in Women's & Gender-Related Health	5
Total Hours			31

- Sample only. All admitted post-master's students will have an individualized curriculum plan based on a gap analysis complete by the Academic Director of the program. As part of the post-master's certificate (PMC) application <https://apply.vanderbilt.edu/apply/>, all applicants are required to provide syllabi for previous master's level courses in advanced health assessment, advanced pathophysiology and advanced pharmacology. Whether or not a PMC student needs to retake one or all of these courses is determined based on the guidelines below:
 - a. APRN certified PMC applicants/students who have previously taken an equivalent Advanced Health Assessment, Advanced Pathophysiology, and Advanced Pharmacology, and have maintained certification (reported on the application), will not be required to repeat these courses. Course equivalency will be determined by syllabi review.
 - b. Non-APRN certified PMC applicants/students will be required to take VUSN Advanced Health Assessment, Advanced Pathophysiology, and Advanced Pharmacology courses unless they satisfy requirements specified in item c.
 - c. If a non-APRN certified student has previously taken one or more of these three courses in the last 5 years (5 years or less at the time of matriculation) the student must provide the syllabi to be reviewed for equivalency. If the course is determined to be equivalent to the VUSN course, was taken within the last 5 years and the grade earned was a B- or higher, the course may be waived. Note: Determination of equivalency does not mean that VUSN transfer credit has been awarded. Equivalent courses will not appear on the VU transcript.