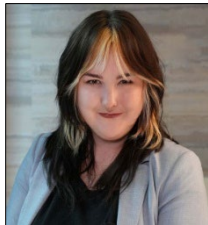


NURSE-MIDWIFERY (NM)



Kendra Faucett, DNP, CNM, APRN, CNE, FACNM
 Director, Nurse-Midwifery Specialty
 348 Frist Hall
Phone: 615.343.0049
E-mail: kendra.faucett@vanderbilt.edu



Haley Bush
 Program Manager
 319B Godchaux Hall
Phone: 615.343.0587
E-mail: haley.bush@vanderbilt.edu

Nurse-Midwifery Specialty Curriculum Plan and Required Hours

Semester	Course Number and Name		Credit Hours	Didactic Clock Hours	Seminar Clock Hours	Clinical Clock Hours	Lab Clock Hours	Total Clock Hours
Fall 1	NURS 6013	Advanced Health Assessment and Clinical Reasoning	2	28				28
	NURS 6014	Advanced Health Assessment Lab	1				28	28
	NURS 6022	Advanced Physiology and Pathophysiology	4	56				56
	NURS 6045	Professional Formation 1: Roles and Contexts for Advanced Nursing Practice	1	14				14
	NURS 6805	Advanced Health Assessment Applications for Nurse-Midwifery	1				28	28
	NURS 6810	Gynecologic, Reproductive and Sexual Health for Nurse Midwifery	3	42				42
	NURS 6811	Reproductive Anatomy and Physiology	2	28				28
	NURS 6812	Evolution of Midwifery in America	2	28				28
		Semester Total		16	196	0	0	56
Spring 1	NURS 6024	Advanced Pharmacology	3	42				42
	NURS 6030	Advanced Practice Nursing in Primary Care of the Adult	3	42				42
	NURS 6055	Professional Formation 2: Application of Evidence in Healthcare Environments	3	42				42
	NURS 6821	Antepartal Care for Nurse-Midwifery	3	42				42
	NURS 6825	Practicum for Gynecologic, Antepartum & Primary Care for Nurse-Midwifery	3			210		210
		Semester Total		15	168	0	210	0
Summer 1	NURS 6065	Professional Formation 3: Leading Collaborative Change: Improving Delivery of Healthcare to Patients and Populations	4	56				56
	NURS 6831	Skills for Nurse-Midwifery	1				28	28
	NURS 6835	Practicum in Intrapartum/Postpartum/Neonatal Nurse-Midwifery Care	4			280		280
	NURS 6836	Intrapartum Care for Nurse-Midwifery	3	42				42
	NURS 6838	Postpartum and Neonatal Care for Nurse-Midwifery	2	28				28
	Semester Total		14	126	0	280	28	434
Fall 2	NURS 6841	Nurse-Midwifery Role Synthesis, Exploration, and Analysis	2	28				28
	NURS 6895	Advanced Clinical Integration Experience for Nurse-Midwifery	5			350		350
		Semester Total		7	28	0	350	0
	Program Total		52	518	0	840	84	1442

Nurse-Midwifery Part-Time Curriculum Plan

<i>Semester</i>	<i>Course Number and Name</i>		<i>Credit Hours</i>
Fall 1	NURS 6022	Advanced Physiology and Pathophysiology	4
	NURS 6045	Professional Formation 1: Roles and Contexts for Advanced Nursing Practice	1
	NURS 6811	Reproductive Anatomy and Physiology	2
Spring 1	NURS 6024	Advanced Pharmacology	3
	NURS 6055	Professional Formation 2: Application of Evidence in Healthcare Environments	3
Summer 1	NURS 6065	Professional Formation 3: Leading Collaborative Change: Improving Delivery of Healthcare to Patients and Populations	4
	NURS 6838	Postpartum and Neonatal Care for Nurse-Midwifery	2
Fall 2	NURS 6013	Advanced Health Assessment and Clinical Reasoning	2
	NURS 6014	Advanced Health Assessment Lab	1
	NURS 6805	Advanced Health Assessment Applications for Nurse-Midwifery	1
	NURS 6810	Gynecologic, Reproductive and Sexual Health for Nurse Midwifery	3
	NURS 6812	Evolution of Midwifery in America	2
Spring 2	NURS 6030	Advanced Practice Nursing in Primary Care of the Adult	3
	NURS 6821	Antepartal Care for Nurse-Midwifery	3
	NURS 6825	Practicum for Gynecologic, Antepartum & Primary Care for Nurse-Midwifery	3
Summer 2	NURS 6831	Skills for Nurse-Midwifery	1
	NURS 6835	Practicum in Intrapartum/Postpartum/Neonatal Nurse-Midwifery Care	4
	NURS 6836	Intrapartum Care for Nurse-Midwifery	3
Fall 3	NURS 6841	Nurse-Midwifery Role Synthesis, Exploration, and Analysis	2
	NURS 6895	Advanced Clinical Integration Experience for Nurse-Midwifery	5
Total Hours			52

Nurse-Midwifery Sample Curriculum Plan for Post Master's Certificate

<i>Semester</i>	<i>Course Number and Name</i>		<i>Credit Hours</i>
Fall 1	NURS 6013	Advanced Health Assessment and Clinical Reasoning	2
	NURS 6014	Advanced Health Assessment Lab	1
	NURS 6022	Advanced Physiology and Pathophysiology	4
	NURS 6805	Advanced Health Assessment Applications for Nurse-Midwifery	1
	NURS 6810	Gynecologic, Reproductive and Sexual Health for Nurse Midwifery	3
	NURS 6811	Reproductive Anatomy and Physiology	2
	NURS 6812	Evolution of Midwifery in America	2
Spring 1	NURS 6024	Advanced Pharmacology	3
	NURS 6030	Advanced Practice Nursing in Primary Care of the Adult	3
	NURS 6821	Antepartal Care for Nurse-Midwifery	3
	NURS 6825	Practicum for Gynecologic, Antepartum & Primary Care for Nurse-Midwifery	3
Summer 1	NURS 6831	Skills for Nurse-Midwifery	1
	NURS 6835	Practicum in Intrapartum/Postpartum/Neonatal Nurse-Midwifery Care	4
	NURS 6836	Intrapartum Care for Nurse-Midwifery	3
	NURS 6838	Postpartum and Neonatal Care for Nurse-Midwifery	2
Fall 2	NURS 6841	Nurse-Midwifery Role Synthesis, Exploration, and Analysis	2
	NURS 6895	Advanced Clinical Integration Experience for Nurse-Midwifery	5
Total Hours			44

- Sample only. All admitted post-master's students will have an individualized curriculum plan based on a gap analysis complete by the Academic Director of the program. As part of the post-master's certificate (PMC) application <https://apply.vanderbilt.edu/apply/>, all applicants are required to provide syllabi for previous master's level courses in advanced health assessment, advanced pathophysiology and advanced pharmacology. Whether or not a PMC student needs to retake one or all of these courses is determined based on the guidelines below:
 - a. APRN certified PMC applicants/students who have previously taken an equivalent Advanced Health Assessment, Advanced Pathophysiology, and Advanced Pharmacology, and have maintained certification (reported on the application), will not be required to repeat these courses. Course equivalency will be determined by syllabi review.
 - b. Non-APRN certified PMC applicants/students will be required to take VUSN Advanced Health Assessment, Advanced Pathophysiology, and Advanced Pharmacology courses unless they satisfy requirements specified in item c.
 - c. If a non-APRN certified student has previously taken one or more of these three courses in the last 5 years (5 years or less at the time of matriculation) the student must provide the syllabi to be reviewed for equivalency. If the course is determined to be equivalent to the VUSN course, was taken within the last 5 years and the grade earned was a B- or higher, the course may be waived. Note: Determination of equivalency does not mean that VUSN transfer credit has been awarded. Equivalent courses will not appear on the VU transcript.