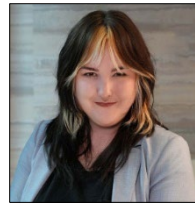


ADULT-GERONTOLOGY PRIMARY CARE NURSE PRACTITIONER (AGPCNP)



Leslie W. Hopkins, DNP, APRN, BC, FNP-BC, ANP-C
 Director, Adult-Gerontology Primary Care Nurse Practitioner Specialty
 384 Frist Hall
 Phone: 615.322.3029
 E-mail: leslie.hopkins@vanderbilt.edu



Haley Bush
 Program Manager
 319B Godchaux Hall
 Phone: 615.343.0587
 E-mail: haley.bush@vanderbilt.edu

Adult-Gerontology Primary Care Nurse Practitioner Curriculum Plan and Required Hours

Semester	Course Number and Name		Credit Hours	Didactic Clock Hours	Seminar Clock Hours	Clinical Clock Hours	Lab Clock Hours	Total Clock Hours
Fall	NURS 6013	Advanced Health Assessment and Clinical Reasoning	2	28				28
	NURS 6014	Advanced Health Assessment Lab	1				28	28
	NURS 6022	Advanced Physiology and Pathophysiology	4	56				56
	NURS 6024	Advanced Pharmacology	3	42				42
	NURS 6034	Adult Gerontology Primary Care I	3	42				42
	NURS 6045	Professional Formation 1: Roles and Contexts for Advanced Nursing Practice	1	14				14
	NURS 6205	Advanced Health Assessment Applications for the Adult-Gerontology Primary Care Nurse Practitioner	1				28	28
	Semester Total			15	182	0	0	56
Spring	NURS 6032	Advanced Practice Primary Care Nursing in Women's & Gender-Related Health	1	14				14
	NURS 6055	Professional Formation 2: Application of Evidence in Healthcare Environments	3	42				42
	NURS 6215	Adult Gerontology Primary Care Nurse Practitioner Clinical I	4			280		280
	NURS 6234	Adult Gerontology Primary Care II	3	42				42
	NURS 6236	Advanced Concepts in the Care of the Older Adult	2	28				28
	Semester Total			13	126	0	280	0
Summer	NURS 6031	Advanced Practice Nursing in Primary Care of the Adolescent	1	14				14
	NURS 6065	Professional Formation 3: Leading Collaborative Change: Improving Delivery of Healthcare to Patients and Populations	4	56				56
	NURS 6075	Role Transition for Advanced Practice Nursing	1	14				14
	NURS 6231	Essential Procedures for the Primary Care Provider	2	28				28
	NURS 6295	Adult Gerontology Primary Care Nurse Practitioner Clinical II	4			280		280
	Semester Total			12	112	0	280	0
Program Total			40	420	0	560	56	1036

Adult-Gerontology Primary Care Nurse Practitioner 2-Year, Part-Time Curriculum Plan

Semester	Course Number and Name		Credit Hours
Fall 1	NURS 6013	Advanced Health Assessment and Clinical Reasoning	2
	NURS 6022	Advanced Physiology and Pathophysiology	4
	NURS 6045	Professional Formation 1: Roles and Contexts for Advanced Nursing Practice	1
Spring 1	NURS 6032	Advanced Practice Primary Care Nursing in Women's & Gender-Related Health	1
	NURS 6055	Professional Formation 2: Application of Evidence in Healthcare Environments	3
	NURS 6236	Advanced Concepts in the Care of the Older Adult	2
Summer 1	NURS 6031	Advanced Practice Nursing in Primary Care of the Adolescent	1

	NURS 6065	Professional Formation 3: Leading Collaborative Change: Improving Delivery of Healthcare to Patients and Populations	4
	NURS 6075	Role Transition for Advanced Practice Nursing	1
Fall 2			
	NURS 6014	Advanced Health Assessment Lab	1
	NURS 6024	Advanced Pharmacology	3
	NURS 6034	Adult Gerontology Primary Care I	3
	NURS 6205	Advanced Health Assessment Applications for the Adult-Gerontology Primary Care Nurse Practitioner	1
Spring 2			
	NURS 6215	Adult Gerontology Primary Care Nurse Practitioner Clinical I	4
	NURS 6234	Adult Gerontology Primary Care II	3
Summer 2			
	NURS 6231	Essential Procedures for the Primary Care Provider	2
	NURS 6295	Adult Gerontology Primary Care Nurse Practitioner Clinical II	4
Total Hours			40

**Adult-Gerontology Primary Care Nurse Practitioner 3-Year, Part-Time Curriculum Plan:
VUMC Employees Only**

<i>Semester</i>	<i>Course Number and Name</i>		<i>Credit Hours</i>
Fall 1	NURS 6045	Professional Formation 1: Roles and Contexts for Advanced Nursing Practice	1
Spring 1			
	NURS 6055	Professional Formation 2: Application of Evidence in Healthcare Environments	3
Summer 1			
	NURS 6065	Professional Formation 3: Leading Collaborative Change: Improving Delivery of Healthcare to Patients and Populations	4
Fall 2			
	NURS 6013	Advanced Health Assessment and Clinical Reasoning	2
	NURS 6022	Advanced Physiology and Pathophysiology	3
Spring 2			
	NURS 6024	Advanced Pharmacology	4
	NURS 6236	Advanced Concepts in the Care of the Older Adult	2
Summer 2			
	NURS 6031	Advanced Practice Nursing in Primary Care of the Adolescent	1
	NURS 6231	Essential Procedures for the Primary Care Provider	2
Fall 3			
	NURS 6034	Adult Gerontology Primary Care I	3
	NURS 6014	Advanced Health Assessment Lab	1
	NURS 6205	Advanced Health Assessment Applications for the Adult-Gerontology Primary Care Nurse Practitioner	1
Spring 3			
	NURS 6032	Advanced Practice Primary Care Nursing in Women's & Gender-Related Health	1
	NURS 6215	Adult Gerontology Primary Care Nurse Practitioner Clinical I	4
	NURS 6234	Adult Gerontology Primary Care II	3
Summer 3			
	NURS 6075	Role Transition for Advanced Practice Nursing	1
	NURS 6295	Adult Gerontology Primary Care Nurse Practitioner Clinical II	4
Total Hours			40

**Adult-Gerontology Primary Care Nurse Practitioner Sample Curriculum Plan for Post
Master's Certificate**

<i>Semester</i>	<i>Course Number and Name</i>		<i>Credit Hours</i>
Fall	NURS 6013	Advanced Health Assessment and Clinical Reasoning	2
	NURS 6014	Advanced Health Assessment Lab	1
	NURS 6022	Advanced Physiology and Pathophysiology	4
	NURS 6024	Advanced Pharmacology	3
	NURS 6034	Adult Gerontology Primary Care I	3
	NURS 6205	Advanced Health Assessment Applications for the Adult-Gerontology Primary Care Nurse Practitioner	1
Spring			
	NURS 6032	Advanced Practice Primary Care Nursing in Women's & Gender-Related Health	1
	NURS 6215	Adult Gerontology Primary Care Nurse Practitioner Clinical I	4
	NURS 6234	Adult Gerontology Primary Care II	3
	NURS 6236	Advanced Concepts in the Care of the Older Adult	2

Summer	NURS 6031	Advanced Practice Nursing in Primary Care of the Adolescent	1
	NURS 6231	Essential Procedures for the Primary Care Provider	2
	NURS 6295	Adult Gerontology Primary Care Nurse Practitioner Clinical II	4
Total Hours			31
<p>• Sample only. All admitted post-master's students will have an individualized curriculum plan based on a gap analysis complete by the Academic Director of the program. As part of the post-master's certificate (PMC) application https://apply.vanderbilt.edu/apply/, all applicants are required to provide syllabi for previous master's level courses in advanced health assessment, advanced pathophysiology and advanced pharmacology. Whether or not a PMC student needs to retake one or all of these courses is determined based on the guidelines below:</p> <p>a. APRN certified PMC applicants/students who have previously taken an equivalent Advanced Health Assessment, Advanced Pathophysiology, and Advanced Pharmacology, and have maintained certification (reported on the application), will not be required to repeat these courses. Course equivalency will be determined by syllabi review.</p> <p>b. Non-APRN certified PMC applicants/students will be required to take VUSN Advanced Health Assessment, Advanced Pathophysiology, and Advanced Pharmacology courses unless they satisfy requirements specified in item c.</p> <p>c. If a non-APRN certified student has previously taken one or more of these three courses in the last 5 years (5 years or less at the time of matriculation) the student must provide the syllabi to be reviewed for equivalency. If the course is determined to be equivalent to the VUSN course, was taken within the last 5 years and the grade earned was a B- or higher, the course may be waived. Note: Determination of equivalency does not mean that VUSN transfer credit has been awarded. Equivalent courses will not appear on the VU transcript.</p>			