



# A Tale of Two States: SPEP in Different JJ Systems

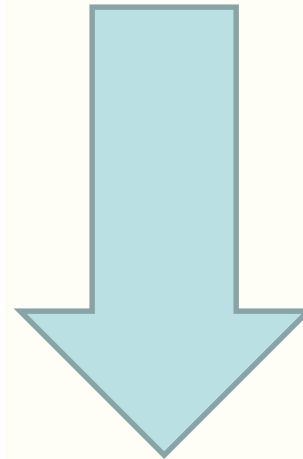
Jill Robinson, Ph.D.



# The juvenile justice challenge



Juvenile Delinquency  
(adjudicated)



Adult Criminality  
(convicted)



# The juvenile justice challenge

A highly functional JJ system must have the capacity to:

- Distinguish youth who are at high risk for re-offence from those youth who are at a low risk to re-offend
- Administer supervision and optimize treatment programs/services to higher risk youth to protect public safety and reduce their risk
- Do no harm to the youth at low risk

And do all this in a consistent, sustained, and measureable manner



# STANDARDIZED PROGRAM EVALUATION PROTOCOL (SPEP)



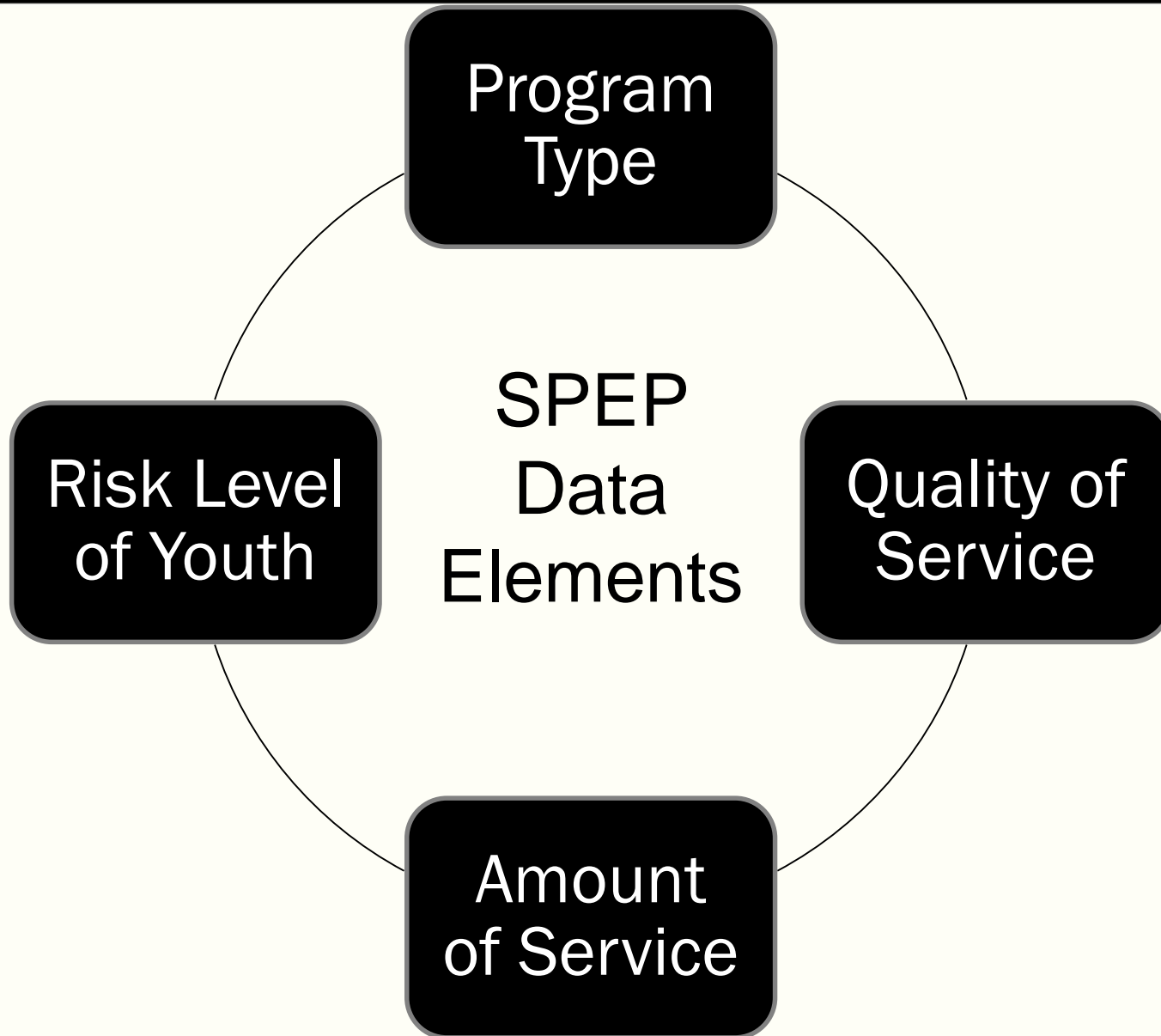
# SPEP 101

- Apply the research knowledge base to assess how well current program practice matches evidence for effectiveness
- A rating scheme for each service type within the therapeutic philosophies
- Apply to individual services based on data about the services actually provided
- Validated with juvenile justice programs in Arizona and North Carolina



# SPEP 101

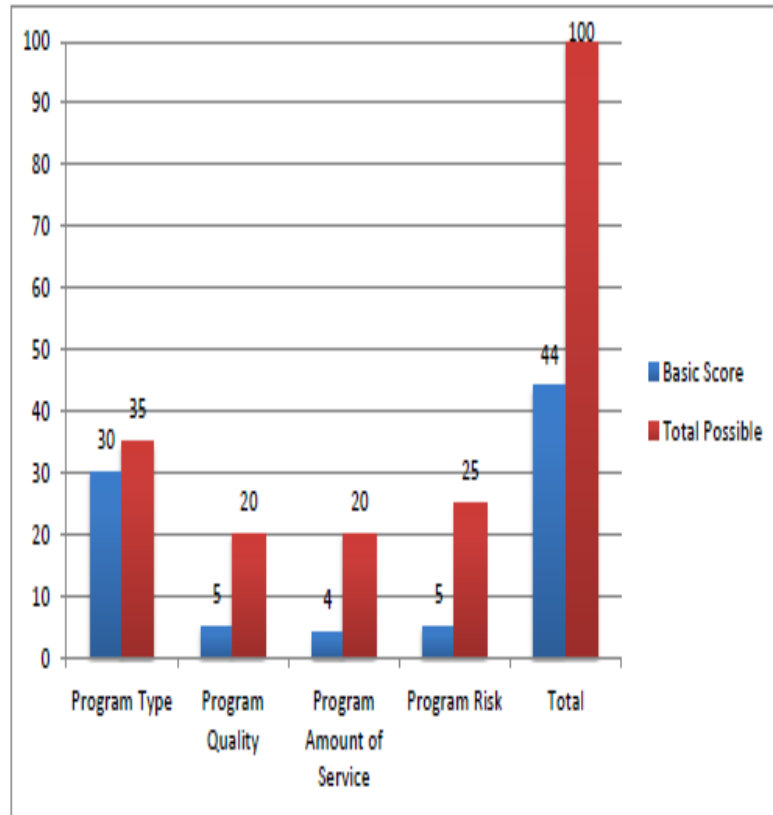
- To have good effects, interventions must be implemented to match the ‘best practice’ found in the research
  - **Program type:** “Therapeutic” programs, with some types more effective than others
  - **Quality of service** delivery: Treatment protocol; monitoring and staff training
  - **Amount of service:** Duration and total number of contact hours
  - **Risk:** Larger effects with higher risk juveniles



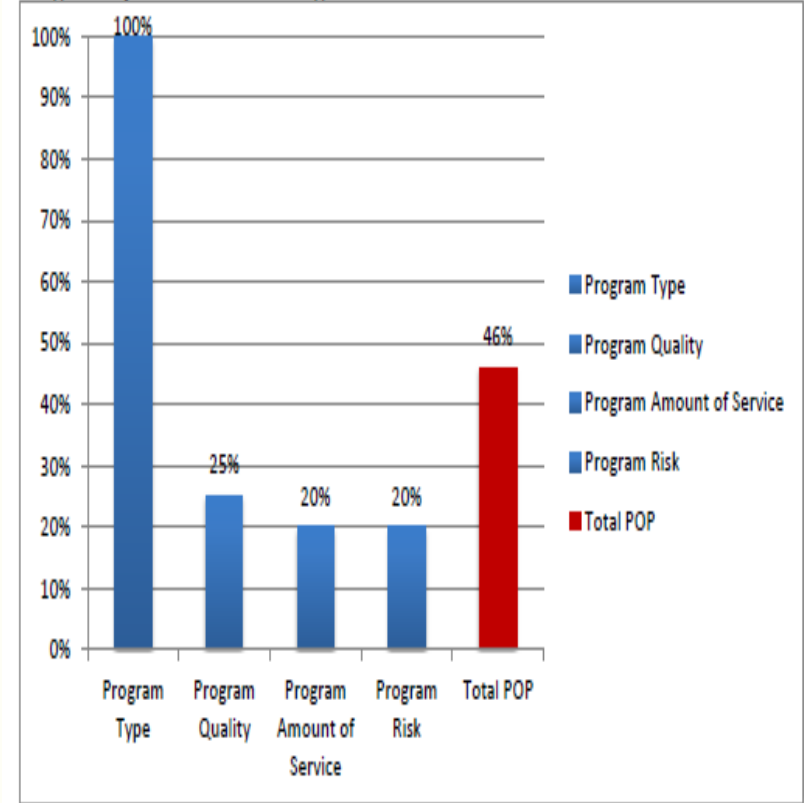


# Side-by-Side Comparisons of the Basic SPEP Score and the Program Optimization Percentage

Basic Score



Program Optimization Percentage







VANDERBILT  
PEABODY COLLEGE

PEABODY  
researchinstitute

# SPEP IN TWO STATES



## SPEP in Two States

- State A
  - First Site Visit
    - November 2014
  - Have already scored programs in 1 YDC
  - In a few months will have scored all SPEPable programs in all YDCs
  - About to move on to community-based programming
- State B
  - Years working with JJ system
  - Statutory initiation
    - 100% of JJ dollars for therapy are supposed to be going to evidence-based practice
  - Still don't have first SPEP score



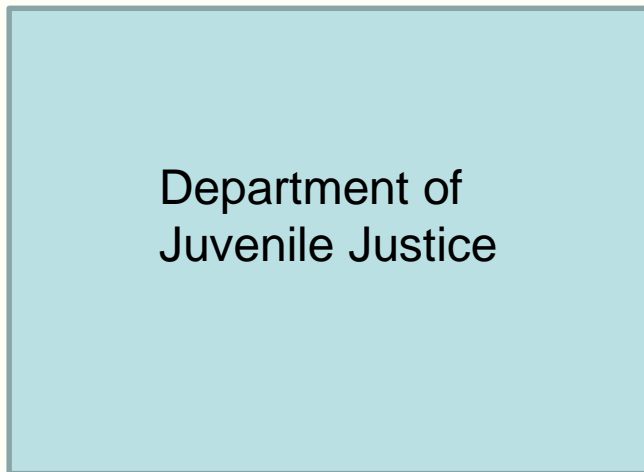
# Supportive Leadership

- ...and leadership stability
- Supportive leadership from executive to mid-level

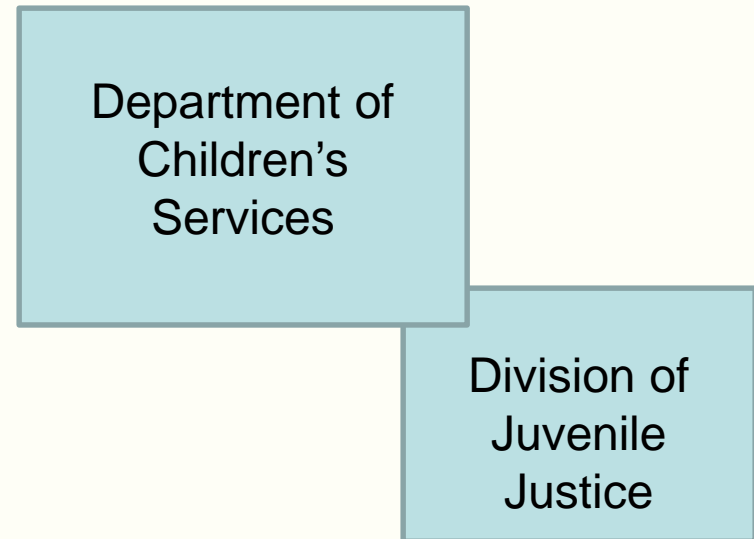


# Dedicated Personnel

State A



State B



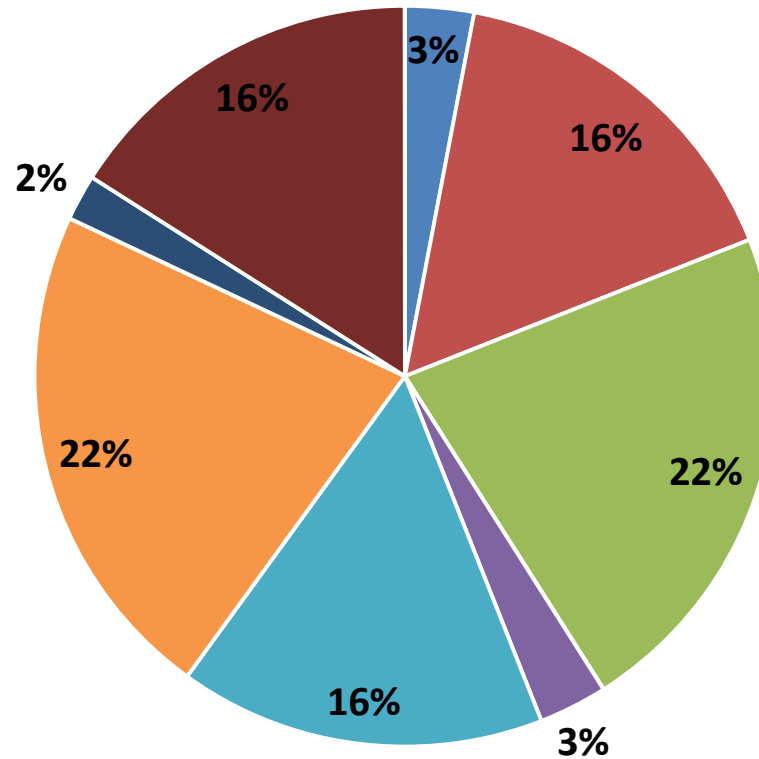


# Availability of Data

- The first questions we ask are related to data
  - What do the data look like?
  - How accessible are the data?
- Work arounds.....



## Percentage of Total Treatment Time



■ Individual Therapy

■ Group Counseling

■ Life Skills

■ Relationship Group

■ Academic

■ Behavior Management

■ Family Therapy

■ Alcohol and Drug Treatment



## Contact information:

[jill.robinson@Vanderbilt.edu](mailto:jill.robinson@Vanderbilt.edu)

Peabody Research Institute

Vanderbilt University

<http://peabody.vanderbilt.edu/research/pri/>