



FLORIDA DEPARTMENT OF JUVENILE JUSTICE

PART OF THE COMMUNITY, PART OF THE SOLUTION

Implementation of the Standardized Program Evaluation Protocol (SPEP) in the Florida Department of Juvenile Justice

Presentation to American Society of Criminology
November 2015

Laura Moneyham

Assistant Secretary for
Residential Services

Meg Bates

Program and Policy Coordinator
for Residential Services



SPEP Context

Florida's Department of Juvenile Justice (FDJJ) is part of the larger Juvenile Justice Systems Improvement Project (JJSIP), a grant sponsored by Georgetown University. Three major components work in tandem:

- Comprehensive Strategy
- Structured Decision Making
- Standardized Program Evaluation Protocol (SPEP)



SPEP Context: Comprehensive Strategy

- A continuum of services from universal prevention through residential and aftercare.
- Ensures the appropriate allocation of resources to each level of services along the continuum.
- Ensures the matching of youth to the level of services based on assessed risk and needs (C-PACT, R-PACT, Prevention Assessment Tool).
- Promotes prevention: Targets at-risk youth; prevents youth from becoming delinquent by focusing prevention programs on at-risk youth.
- Incorporates Interventions and Graduated Sanctions: Target delinquent youth; Improve the juvenile justice system's response to delinquent offenders within a continuum of treatment and service options and a system of graduated sanctions.



SPEP Context: Structured Decision Making

- ◉ Disposition Recommendation Matrix.
- ◉ Is a structured decision making tool that assists with matching youth to the appropriate level of service/supervision.
- ◉ Is based on a matrix of risk to reoffend (C-PACT) and the presenting offense.
- ◉ Consists of graduated sanctions – The intensity of services increases as the risk level and offense severity increases.



SPEP Context: Structured Decision Making

- Low-risk offenders remain in the community with minimal supervision.
- Moderate-risk offenders typically placed in more structured community programs, with intensive probation supervision for higher risk youth.
- Residential placement reserved for the highest risk offenders after community-based alternatives have been exhausted.





Florida Department of Juvenile Justice Disposition Recommendation Matrix

(Staff should begin with the least restrictive setting within a particular disposition category. See Structured Decision-Making guidelines.)

Most Serious Presenting Offense	PACT Risk Level to Reoffend			
	Low Risk to Reoffend	Moderate Risk to Reoffend	Moderate-High Risk to Reoffend	High Risk to Reoffend
Civil Citation Eligible ¹	Level 1	Level 1	N/A	N/A
Minor ²	Level 2 or 3a	Level 2 or 3a	Level 2 or 3a-c	Level 3a-c or 4
Serious ³	Level 2 or 3a	Level 2 or 3a-b	Level 3a-c or 4	Level 3a-c or 4
Violent ⁴	Level 2 or 3a-b	Level 2, 3a-c, or 4	Level 3a-c, 4, or 5	Level 3a-c, 4, or 5

¹ – Eligibility for civil citation is outlined in F.S. 985.12. Youth deemed ineligible for civil citation (based on community standards) should be reviewed under the “Minor” offense category based on the PACT risk level to reoffend.

² – All misdemeanor offenses.

³ – Felony offenses that do not include violence.

⁴ – Violent felony offenses (do not include misdemeanor assault and battery which are captured under “Minor”).

Level 1 – Alternatives to Arrest

Level 3 – Community Supervision

(3a) – Probation Supervision

(3b) – Probation Enhancement Services (ART, LifeSkills, etc.)

(3c) – Day Treatment, MST, FFT, Minimum Risk Commitment

Level 2 – Diversion & Non-DJJ Probation

Level 4 – Non-Secure Residential Commitment

Level 5 – Secure Residential Commitment (High & Maximum Risk Programs)



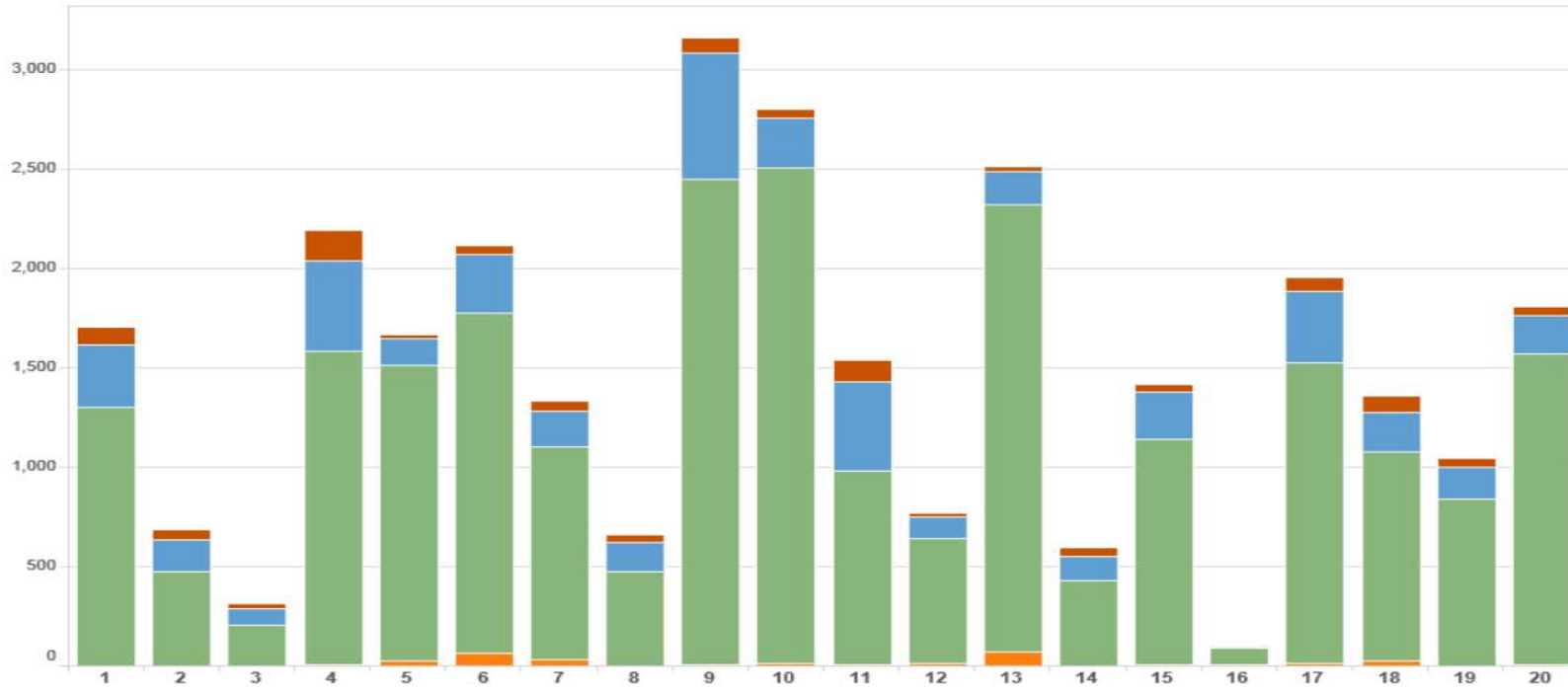
Dispositional Matrix Report



Disposition: (Multiple values) |
 PACT Risk level: (All) |
 Gender: (All) |
 Race/Ethnicity: (All)

■ Above Guidelines
 ■ Appropriate Placement
 ■ Optimum Placement
 ■ Below Guidelines
 Youth #
 Youth %

Placements by Circuit September 2014 - August 2015



Optimum Placement	1,302	471	207	1,576	1,492	1,707	1,075	475	2,443	2,500	971	629	2,253	428	1,137	85	1,517	1,051	837	1,567
Appropriate Placement	314	162	78	456	133	300	177	145	632	250	453	107	171	123	236	9	356	200	165	191
Above Guidelines	88	49	26	159	23	41	51	40	81	43	107	24	20	41	43	1	76	82	41	44
Below Guidelines	3	2	1	6	23	67	31	1	9	10	8	13	68	2	5	5	10	26	2	7

Questions about the data should be directed to Mark Greenwald by e-mail at mark.greenwald@djj.state.fl.us.
 For more information visit <http://www.djj.state.fl.us/>

The Department publishes Disposition Recommendation Matrix data on their website.



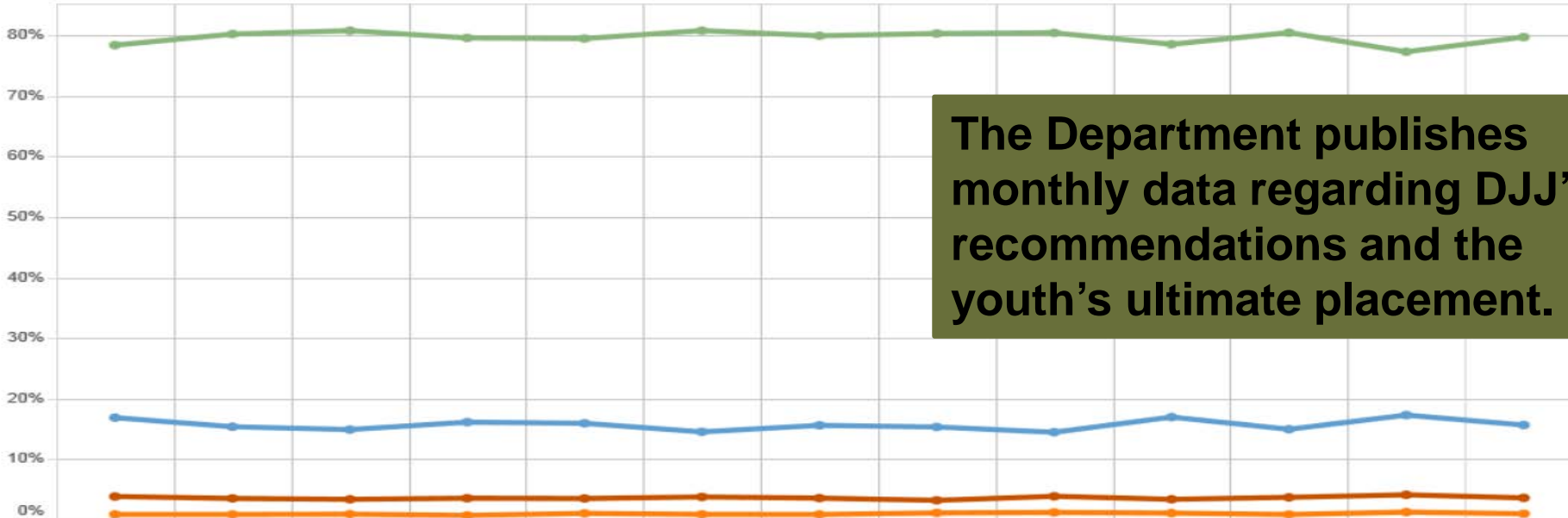
Dispositional Matrix Report

Florida Department of
JUVENILE JUSTICE
Our Child, Our Future

Region: (All) |
 Circuit: (All) |
 County: (All) |
 Disposition: (Multiple values) |
 PACT Risk level: (All) |
 Gender: (All) |
 Race/Ethnicity: (All)

■ Above Guidelines |
 ■ Appropriate Placement |
 ■ Optimum Placement |
 ■ Below Guidelines

Placements by Month September 2014 - August 2015



The Department publishes monthly data regarding DJJ's recommendations and the youth's ultimate placement.

	AUG	SEP	OCT	NOV	DEC	JAN	FEB	MAR	APR	MAY	JUN	JUL	Grand Total
Optimum Placement	1,584	1,904	2,167	1,736	2,004	1,962	1,982	2,241	2,212	1,967	2,097	1,867	23,723
% difference from previous	78%	80%	81%	80%	79%	81%	80%	80%	80%	79%	80%	77%	80%
		2.3%	0.7%	-1.5%	-0.1%	1.7%	-1.1%	0.5%	0.1%	-2.3%	2.4%	-3.9%	
Appropriate Placement	341	365	400	352	402	353	387	428	398	425	390	418	4,659
% difference from previous	17%	15%	15%	16%	16%	15%	16%	15%	14%	17%	15%	17%	16%
		-8.9%	-3.0%	8.2%	-1.2%	-8.8%	7.4%	-1.7%	-5.7%	17.3%	-11.8%	15.7%	
Above Guidelines	78	84	91	78	89	92	89	90	107	85	97	100	1,080
% difference from previous	4%	4%	3%	4%	4%	4%	4%	3%	4%	3%	4%	4%	4%
		-8.3%	-4.1%	5.4%	-1.3%	7.3%	-5.3%	-10.1%	20.6%	-12.8%	9.7%	11.2%	
Below Guidelines	18	21	25	16	27	22	22	32	34	28	23	31	299
% difference from previous	1%	1%	1%	1%	1%	1%	1%	1%	1%	1%	1%	1%	1%
		-0.7%	5.3%	-21.3%	46.0%	-15.4%	-2.1%	29.2%	7.8%	-9.6%	-21.1%	45.4%	
Total	2,021	2,374	2,683	2,182	2,522	2,429	2,480	2,791	2,751	2,505	2,607	2,416	29,761
% difference from previous	100%	100%	100%	100%	100%	100%	100%	100%	100%	100%	100%	100%	100%
		0.0%	0.0%	0.0%	0.0%	0.0%	0.0%	0.0%	0.0%	0.0%	0.0%	0.0%	



2014 Disposition Matrix Validation Study

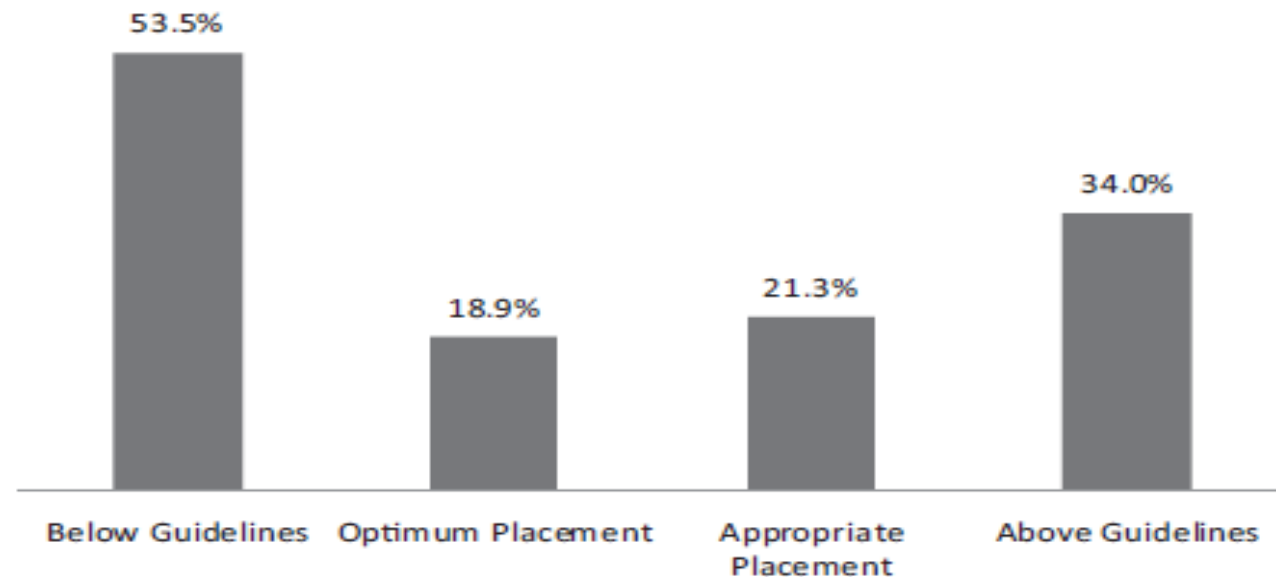


- 38,117 youth released in FY10-11.
- Below ($n=691$)
Optimum ($n=27,916$)
Appropriate ($n=7,322$)
Above ($n=2,188$)
- Holds true for males, females, across race/ethnicity, and for all risk levels of youth.

Baglivio, Greenwald, and Russell

FIGURE 3

Full Sample Twelve-Month Recidivism Rates by Level of Adherence to the Disposition Matrix



Disposition Matrix Statewide Implementation

- Disposition Matrix implementation began in FY2010-2011.
- Circuit-based presentation and education about Disposition Matrix for FDJJ staff and community stakeholders.
- Disposition Matrix statewide implementation targeted for completion by the end of FY2015-2016.



Comprehensive Strategy: Targeting Youth

- Part of the Comprehensive Strategy is ensuring that youth in residential commitment programs are higher risk youth, as measured by the C-PACT.
- Youth with higher C-PACT risk to reoffend scores receive interventions with the most potential for recidivism reduction.
- One component of the SPEP measures youths' C-PACT risk levels at admission to a residential program.



Comprehensive Strategy: Targeting Youth

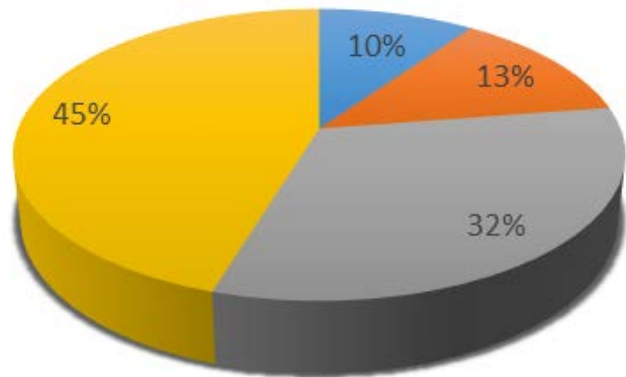
The Disposition Matrix and Comprehensive Strategy have contributed to decreasing the number of youth in residential commitment programs who score low risk to reoffend on the Positive Achievement Change Tool (PACT) assessment.



Comprehensive Strategy: Targeting Youth

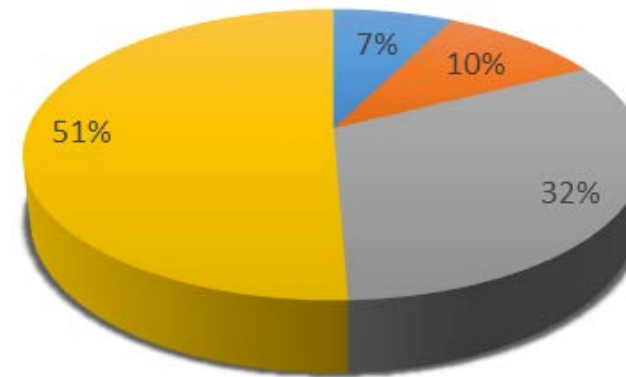
Cross-sectional snapshot of youth's PACT risk levels at time of commitment.

PACT Risk Levels for All Youth in Residential Commitment (September 30th, 2008)



■ Low ■ Moderate ■ Moderate-High ■ High

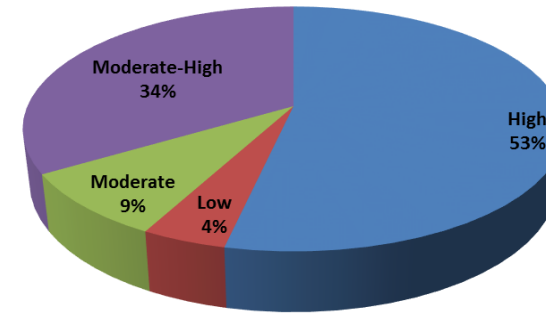
PACT Risk Levels for All Youth in Residential Commitment (September 30th, 2015)



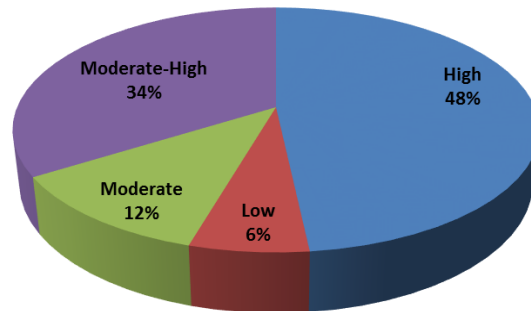
■ Low ■ Moderate ■ Moderate-High ■ High

Snapshot of youth in residential program types on November 12, 2015 by PACT risk to re-offend.

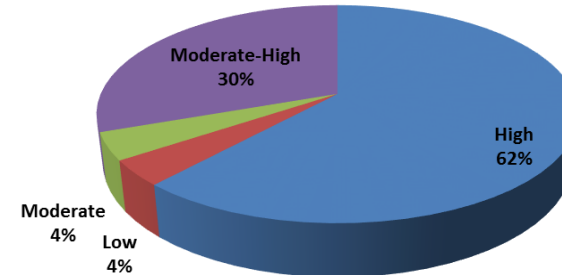
Substance Abuse Programs



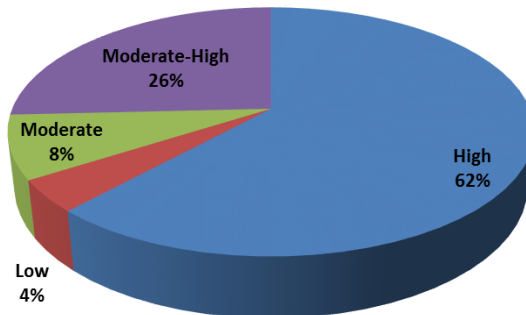
Behavioral/Mental Health Programs



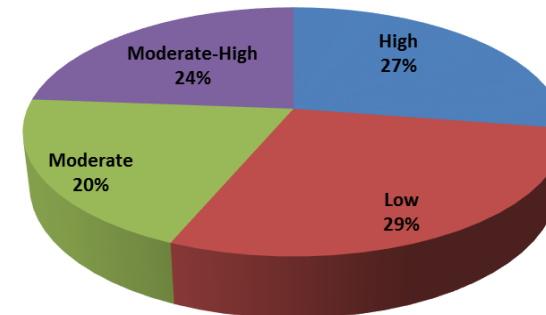
Intensive Mental Health, Major Disorders, Medical Programs



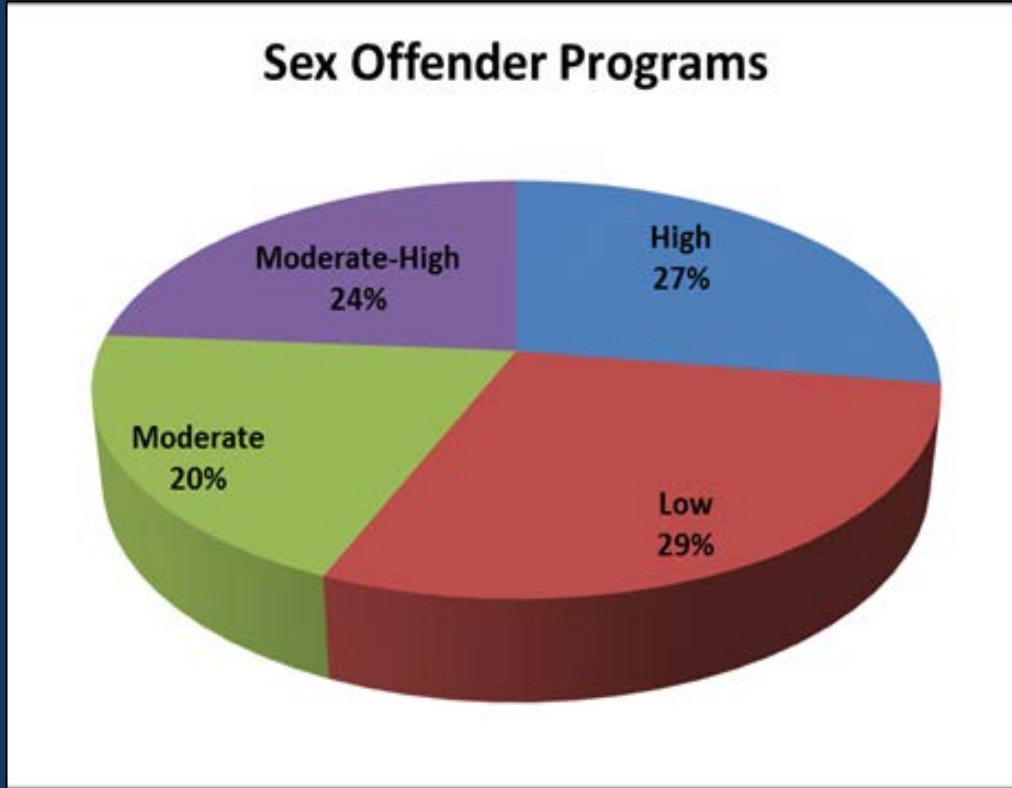
Developmental Disability Programs



Sex Offender Programs



Comprehensive Strategy: Targeting Youth



27% of youth placed in sexual offense-specific commitment programs score high risk on the PACT.

Less than half of other program types and statewide overall.

Comprehensive Strategy: SPEP Risk to Reoffend

Risk Level of Youth Served:

SPEP proxy measure to assess whether residential programs are serving the highest-risk youth.

Standardized Program Evaluation Protocol (SPEP) for Services to Juvenile Offenders [®] Recalibrated version, 2012		Points Possible	Points Received
Primary and Supplemental Service Types <small>[Identified according to definitions derived from the research]</small>			
Primary Service Type for Program Being Rated		30	
Group 1 services (5 points)	Group 4 services (25 points)		
Group 2 services (10 points)	Group 5 services (30 points)		
Group 3 services (15 points)		5	
Supplemental Service Type			
Qualifying supplemental service used: Yes (5 points) No (0 points)			
Quality of Service Delivery <small>[Determined from a systematic assessment of the relevant features of the provider and provider organization]</small>			
Rated quality of services delivered:		20	
Low (5 points)			
Medium (10 points)			
High (20 points)			
Amount of Service <small>[Determined from data for the qualifying group of service recipients]</small>			
Duration [Target number of weeks specified for each service type]		10	
% of youth who received at least the target weeks of service:			
0% (0 points)	60% (6 points)		
20% (2 points)	80% (8 points)		
40% (4 points)	99% (10 points)		
Contact Hours [Target number of hours specified for each service type]		10	
% of youth who received at least the target hours of service:			
0% (0 points)	60% (6 points)		
Risk Level of Youth Served <small>[Determined from risk ratings on a valid instrument for the qualifying group of service recipients]</small>			
% of youth with at least the target risk score set for the JJ system:		25	
0% (0 points)	60% (15 points)		
20% (5 points)	80% (20 points)		
40% (10 points)	99% (25 points)		
		100	(Insert)

© Copyright held by Mark W. Lipsey, Peabody Research Institute, Vanderbilt University.
Not to be copied or used without explicit permission.



Florida DJJ's SPEEP Implementation Schedule



Note: FY=fiscal year. Florida's state government fiscal year is July 1st – June 30th.



FY 2012-13: SPEP Capacity/Structure Building

- Disposition Matrix developed for implementation.
- SPEP Quality Guidelines in development.
- Evidence-Based Services Module in development the FDJJ's information database.
- Delinquency intervention groups and categories established.



FY 2012-13

- Evidence-Based Services identified for use in residential programs
- Services arranged into groups and categories

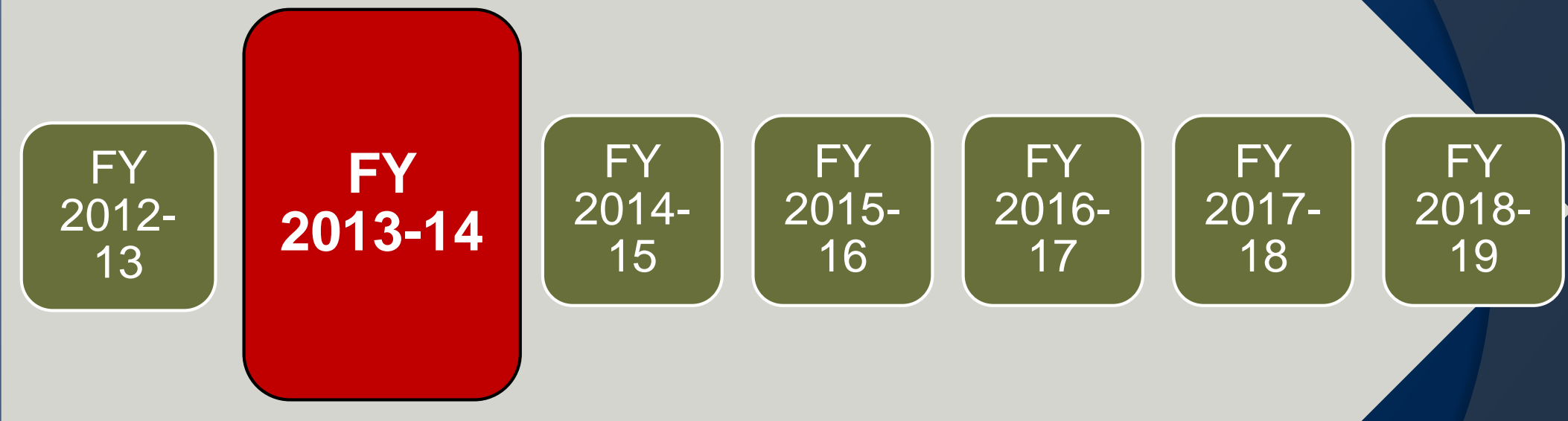
SERVICE DOCUMENTATION TEMPLATE

Provider Name: _____
 Program Name: _____
 Program Type: _____
 Program Monitor Completing Template: _____
 Date Program Monitor Completed: _____
 Technical Assistance Staff Template Submitted To: _____

Program Monitor Data Collection																			Bureau of QI Only		
Key Components: Service Documentation													Demographic Program Profile						Classification		
1	2	3	4	5	6	7	8	9	10	11	12	13	14	15	16	17	18	19	20	21	22
Service Name, Curriculum, or Intervention	Exposure - Which youth receive the service/ how is that determined	What typically occurs during the service	Topics or Subjects	How often is service provided	When is the service provided (Which days of the week)	Duration of Service, Curriculum, or Intervention (Weeks)	Duration (Length) per Face-to-Face Session (minutes)	Total Number of Hours per Week of Face-to-Face Contact	Number of Youth receiving the service (number of youth per group)	Who provides the service	Facilitator/ Service Personnel Qualifications	Facilitator Trained in the Specific practice (yes/no)	Risk to Re-Offend Level	Ages Served	Gender Served	Program Capacity (Beds or Slots)	Geographical Reach (Service Area)	Length of Stay	Service Type P=Primary S=Supplemental	Group Classification Number/SPEP Category	Group Sub-Classification Name
(EXAMPLE): Thinking for a Change (T4C)	All youth who have antisocial attitudes on the aggression domain of the initial RPACT	T4C is 25 lessons, delivered 2 times per week; the purpose of the curriculum is to address antisocial	Problem Solving, Cognitive Self Change, Social Skills	2 times per week	Tuesdays and Thursdays	25 lessons, approximately 15 weeks	90	3	8-12	Therapists	LMHC	Yes	Only moderate-high or high risk youth	13-18	Female	30 bed residential facility	Statewide	9-12 mos	P	Group 5	Cognitive-behavioral therapy



Florida DJJ's SPEEP Implementation Schedule



Note: FY=fiscal year. Florida's state government fiscal year is July 1st – June 30th.



FY 2013-14: Quality of Service Delivery

- Disposition Matrix implementation presentation to judicial circuits initiated.
- Evidence-Based Services Module data collection system in development and implementation.
- SPEP Quality of Service Delivery Indicators implemented statewide.



FY 2013-14: Quality of Service Delivery

Seven Quality of Service Delivery Indicators Developed

Standardized Program Evaluation Protocol (SPEP) for Services to Juvenile Offenders® Recalibrated version, 2012			Points Possible	Points Received
Primary and Supplemental Service Types [Identified according to definitions derived from the research]				
Primary Service Type for Program Being Rated			30	
Group 1 services (5 points) Group 4 services (25 points) Group 2 services (10 points) Group 5 services (30 points) Group 3 services (15 points)				
Quality of Service Delivery [Determined from a systematic assessment of the relevant features of the provider and provider organization]				
Rated quality of services delivered:			20	
Low (5 points) Medium (10 points) High (20 points)				
Amount of Service				
% of youth who received at least the target weeks of service:			10	
0% (0 points) 60% (6 points) 20% (2 points) 80% (8 points) 40% (4 points) 99% (10 points)				
Contact Hours [Target number of hours specified for each service type]			10	
% of youth who received at least the target hours of service:				
0% (0 points) 60% (6 points) 20% (2 points) 80% (8 points) 40% (4 points) 99% (10 points)				
Risk Level of Youth Served [Determined from risk ratings on a valid instrument for the qualifying group of service recipients]				
% of youth with at least the target risk score set for the JJ system:			25	
0% (0 points) 60% (15 points) 20% (5 points) 80% (20 points) 40% (10 points) 99% (25 points)				
Provider's Total SPEP Score			100	[Insert Score]

© Copyright held by Mark W. Lipsey, Peabody Research Institute, Vanderbilt University.
Not to be copied or used without explicit permission.



FY 2013-14: Quality of Service Delivery

Quality Indicators

Facilitator Training	0,1
Primary Service Manual/Protocol	0,1,2
Observed Adherence to Manual/Protocol	0,1
Facilitator Turnover	0,1,2
Internal Fidelity Monitoring	0,1,2
Corrective Action Based on Fidelity Monitoring	0,1
Evaluation of Facilitator Skill Delivering the Primary Service	0,1
TOTAL POSSIBLE RATING	10

Standardized Program Evaluation Protocol (SPEP) for Services to Juvenile Offenders® <small>Recalibrated version, 2012</small>		
	Points Possible	Points Received
Primary and Supplemental Service Types <small>[Identified according to definitions derived from the research]</small>		
Primary Service Type for Program Being Rated <small>Group 1 services (5 points) Group 4 services (25 points) Group 2 services (10 points) Group 5 services (30 points) Group 3 services (15 points)</small>	30	
Supplemental Service Type <small>Qualifying supplemental service used: Yes (5 points) No (0 points)</small>	5	
Quality of Service Delivery <small>[Determined from a systematic assessment of the relevant features of the provider and provider organization]</small>		
Rated quality of services delivered: <small>Low (5 points) Medium (10 points) High (20 points)</small>	20	
Amount of Service <small>[Determined from data for the qualifying group of service recipients]</small>		
Duration [Target number of weeks specified for each service type] <small>% of youth who received at least the target weeks of service: 0% (0 points) 60% (6 points) 20% (2 points) 80% (8 points) 40% (4 points) 99% (10 points)</small>	10	
Contact Hours [Target number of hours specified for each service type] <small>% of youth who received at least the target hours of service: 0% (0 points) 60% (6 points) 20% (2 points) 80% (8 points) 40% (4 points) 99% (10 points)</small>	10	
Risk Level of Youth Served <small>[Determined from risk ratings on a valid instrument for the qualifying group of service recipients]</small>		
% of youth with at least the target risk score set for the JJ system: <small>0% (0 points) 60% (15 points) 20% (5 points) 80% (20 points) 40% (10 points) 99% (25 points)</small>	25	
Provider's Total SPEP Score	100	(Insert Score)

© Copyright held by Mark W. Lipsey, Peabody Research Institute, Vanderbilt University.
Not to be copied or used without explicit permission.



FY 2013-14: Quality of Service Delivery

DJJ's Quality of Service Delivery Rating Guide is publicly available on the Florida DJJ website

Standardized Program Evaluation Protocol
[SPEP] Treatment Quality Rating Guide



FY 2013-14: Quality of Service Delivery

- Quality data gathered, but not publicly reported.
- Quality data utilized as a baseline measure to assess future performance changes.
- No dosage data collected.



Florida DJJ's SPEEP Implementation Schedule

FY 2012-13

FY 2013-14

FY 2014-15

FY 2015-16

FY 2016-17

FY 2017-18

FY 2018-19

Note: FY=fiscal year. Florida's state government fiscal year is July 1st – June 30th.



FY 2014-15: Dosage of Service

- Evidence-Based Services Module development completed.
- Users were trained to enter data.
- Residential programs began data collection.

**Standardized Program Evaluation Protocol (SPEP)
for Services to Juvenile Offenders**
Recalibrated version, 2012

	Points Possible	Points Received
Primary and Supplemental Service Types <small>[Identified according to definitions derived from the research]</small>		
Primary Service Type for Program Being Rated		
Group 1 services (5 points)	30	
Group 2 services (10 points)		
Group 3 services (15 points)		
Group 4 services (25 points)		
Group 5 services (30 points)		
Supplemental Service Type <small>Qualifying supplemental service used: Yes (5 points) No (0 points)</small>		
Quality of Service Delivery <small>[Determined from a systematic assessment of the relevant features of the provider and provider organization]</small>		
Rated quality of services delivered: <small>(10 points)</small>		
Amount of Service <small>[Determined from data for the qualifying group of service recipients]</small>		
Duration [Target number of weeks specified for each service type]		
% of youth who received at least the target weeks of service:	10	
0% (0 points) 60% (6 points)		
20% (2 points) 80% (8 points)		
40% (4 points) 99% (10 points)		
Contact Hours [Target number of hours specified for each service type]		
% of youth who received at least the target hours of service:	10	
0% (0 points) 60% (6 points)		
20% (2 points) 80% (8 points)		
40% (4 points) 99% (10 points)		
Risk Level of Youth Served		
% of youth with at least the target risk score set for the JJ system:	25	
0% (0 points) 60% (15 points)		
20% (5 points) 80% (20 points)		
40% (10 points) 99% (25 points)		
Provider's Total SPEP Score		100
		(Insert Score)

© Copyright held by Mark W. Lipsey, Feabody Research Institute, Vanderbilt University.
Not to be copied or used without explicit permission.



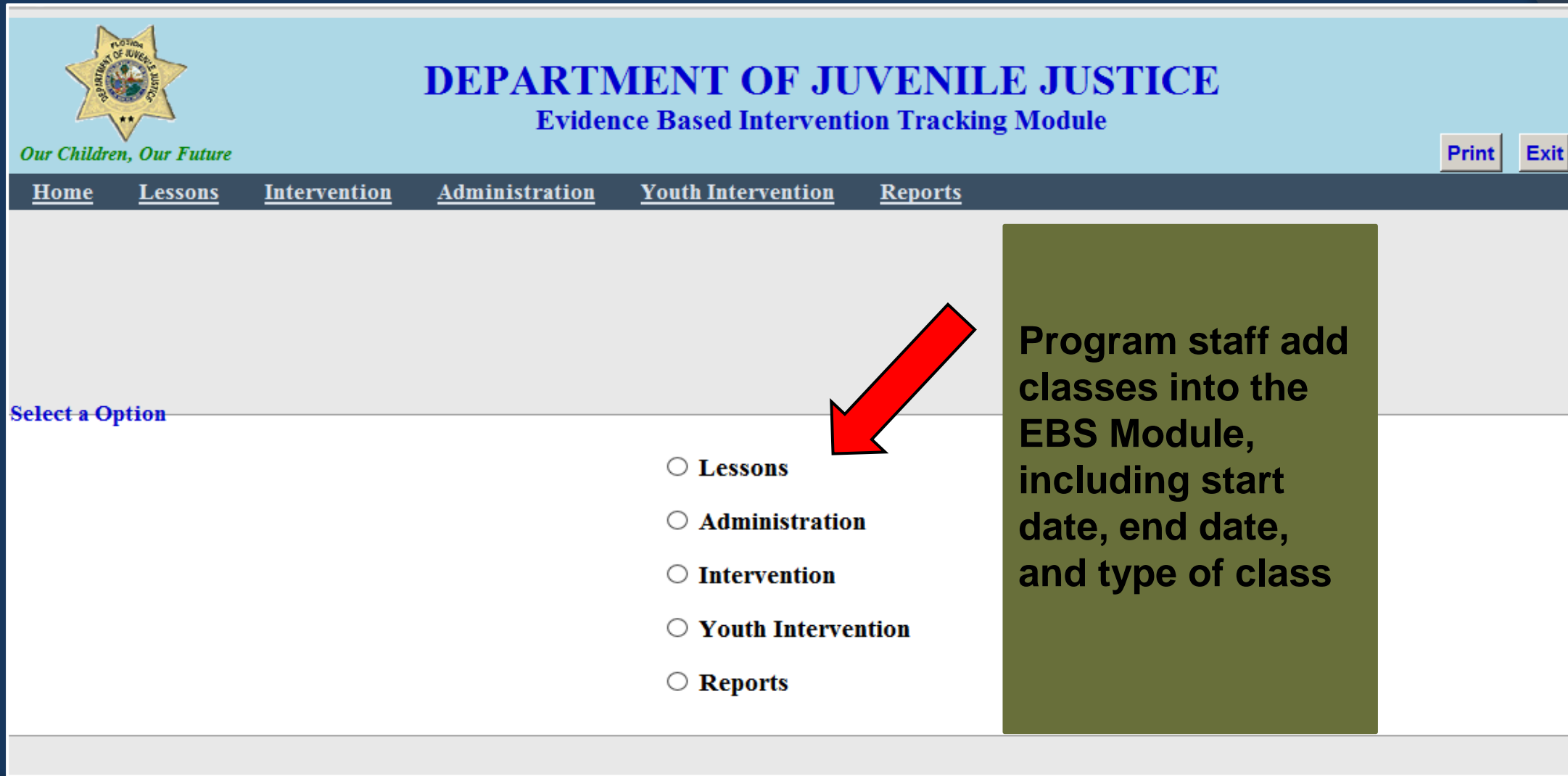
FY 2014-15: Dosage of Service Targets

Intervention Group	Service Categories*	Target Weeks	Target Hours
Group 5	Cognitive-Behavioral Therapy	15 weeks	45 hours
Group 4	Group Counseling	24 weeks	40 hours
Group 3	Social Skills Training	16 weeks	24 hours
Group 2	Remedial Academic Program	26 weeks	100 hours
Group 1	Individual Counseling	25 weeks	30 hours
Group 1	Job Training	25 weeks	400 hours

* Note: Not an exhaustive list of possible categories. List edited to reflect those service categories commonly used in Florida. Dosage requirements identified in Lipsey's (2009) meta-analysis.



FY 2014-15: Data Collection in the EBS Module



The screenshot shows the web interface for the Evidence Based Intervention Tracking Module. At the top left is the Florida Department of Juvenile Justice logo with the tagline "Our Children, Our Future". The main header reads "DEPARTMENT OF JUVENILE JUSTICE Evidence Based Intervention Tracking Module". On the right side of the header are "Print" and "Exit" buttons. Below the header is a navigation menu with links for "Home", "Lessons", "Intervention", "Administration", "Youth Intervention", and "Reports". The main content area features a "Select a Option" label on the left and a list of radio buttons for "Lessons", "Administration", "Intervention", "Youth Intervention", and "Reports". A red arrow points from a text box on the right to the "Lessons" radio button. The text box contains the instruction: "Program staff add classes into the EBS Module, including start date, end date, and type of class".

DEPARTMENT OF JUVENILE JUSTICE
Evidence Based Intervention Tracking Module

[Home](#) [Lessons](#) [Intervention](#) [Administration](#) [Youth Intervention](#) [Reports](#)

Select a Option

- Lessons
- Administration
- Intervention
- Youth Intervention
- Reports

Program staff add classes into the EBS Module, including start date, end date, and type of class



FY 2014-15: Data Collection in the EBS Module

DEPARTMENT OF JUVENILE JUSTICE
Evidence Based Intervention Tracking Module

Home Lessons Intervention Administration Youth Intervention Reports

CLASS DETAILS

Facility: Alachua Academy Non-Secure (Alachua Academy is a non-...)

Class Information

Edit	Delete	Class ID	Class Name	Intervention Name	Start Date	End Date	Last Edited By	Add Youths To Class	Work
Edit	Delete	1267	Girls...moving On	Girls...moving On	10/27/2014		Donaldson, Vicki L 10/28/2014	Add Youths	Work
Edit	Delete	1253	Girls...moving On	Girls...moving On	08/12/2014		Donaldson, Vicki L 10/27/2014	Add Youths	Work
Edit	Delete	1247	Thinking For A Change	Thinking For A Change - 25 Lesson	08/11/2014		Donaldson, Vicki L 10/27/2014	Add Youths	Work

You are viewing page 1 of 1

Add - Class Information

* Class Name:

Facility: Alachua Academy Non-Secure (Alachua Academy is a non-...)

* Intervention:

* Class Start Date:

Class End Date:

* Provided By:

An asterisk (*) denotes a required field

Staff add classes into the EBS Module, including start date, end date, and type of intervention



FY 2014-15: Data Collection in the EBS Module



DEPARTMENT OF JUVENILE JUSTICE Evidence Based Intervention Tracking Module

Our Children, Our Future

[Home](#) [Lessons](#) [Intervention](#) [Administration](#) [Youth Intervention](#) [Reports](#)

CLASS DETAILS - YOUTH INTERVENTION LESSONS

Facility

Facility: Big Cypress Youth Environment Services Non-Secure (This is a staff secure
Class Name: Cyt- Prince, V
Intervention Name: Cannabis Youth Treatment Met/cbt 12

[Youth Intervention WorkSheet](#)

[Youth Intervention](#)

Youth(s) Lessons Information

Lesson Duration: 1

[Fill In Times For Lessons](#)

Check All Unentered Lessons

Youth Name	DJJID	Lesson										
CONFIDENTIAL		<input type="checkbox"/>	<input type="checkbox"/>	<input type="checkbox"/> Cbt	<input type="checkbox"/> Cbt	<input type="checkbox"/> Cbt	<input type="checkbox"/> Cbt	<input type="checkbox"/> Cbt	<input type="checkbox"/> Cbt	<input type="checkbox"/> Cbt	<input type="checkbox"/> Cbt	<input type="checkbox"/> Cbt
	Individual Session 1: 1.00 hrs	Individual Session 2: 1.00 hrs	Session 1: 1.25 hrs	Session 2: 1.00 hrs	Session 3: 1.25 hrs	Session 4: 1.25 hrs	Session 5: 1.25 hrs	Session 6: 1.25 hrs	Session 7: --- hrs	Session 8: --- hrs	Session 9: --- hrs	Session 10: --- hrs
		<input type="checkbox"/>	<input type="checkbox"/>	<input type="checkbox"/> Cbt	<input type="checkbox"/> Cbt	<input type="checkbox"/> Cbt	<input type="checkbox"/> Cbt	<input type="checkbox"/> Cbt	<input type="checkbox"/> Cbt	<input type="checkbox"/> Cbt	<input type="checkbox"/> Cbt	<input type="checkbox"/> Cbt
Individual Session 1:	Individual Session 2:	Session 1: 1.25	Session 2:	Session 3: 1.25	Session 4: 1.25	Session 5: 1.25	Session 6:	Session 7:	Session 8:	Session 9: 0.1.25	Session 10:	

Staff add class details into the EBS Module, including the exact number of hours spent on specific lessons.



FY 2014-15: Dosage of Service

- Quality data gathered is reported on FDJJ's website and quarterly residential program data sheets.
- Dosage data utilized as a baseline measure to assess future performance changes.
- Program youth dosage data not publicly reported.



Florida DJJ's SPEEP Implementation Schedule

FY 2012-13

FY 2013-14

FY 2014-15

FY 2015-16

FY 2016-17

FY 2017-18

FY 2018-19

Note: FY=fiscal year. Florida's state government fiscal year is July 1st – June 30th.



FY 2015-16: Full Report

Standardized Program Evaluation Protocol (SPEP) for Services to Juvenile Offenders [®] Recalibrated version, 2012			Points Possible	Points Received
Primary and Supplemental Service Types				
[Identified according to definitions derived from the research]				
Primary Service Type for Program Being Rated			30	
Group 1 services (5 points) Group 4 services (25 points)				
Group 2 services (10 points) Group 5 services (30 points)				
Group 3 services (15 points)			5	
Supplemental Service Type				
Qualifying supplemental service used: Yes (5 points) No (0 points)				
Quality of Service Delivery				
[Determined from a systematic assessment of the relevant features of the provider and provider organization]				
Rated quality of services delivered:			20	
Low (5 points)				
Medium (10 points)				
High (20 points)				
Amount of Service				
[Determined from data for the qualifying group of service recipients]				
Duration [Target number of weeks specified for each service type]			10	
% of youth who received at least the target weeks of service:				
0% (0 points) 60% (6 points)				
20% (2 points) 80% (8 points)				
40% (4 points) 99% (10 points)				
Contact Hours [Target number of hours specified for each service type]			10	
% of youth who received at least the target hours of service:				
0% (0 points) 60% (6 points)				
20% (2 points) 80% (8 points)				
40% (4 points) 99% (10 points)				
Risk Level of Youth Served				
[Determined from risk ratings on a valid instrument for the qualifying group of service recipients]				
% of youth with at least the target risk score set for the JJ system:			25	
0% (0 points) 60% (15 points)				
20% (5 points) 80% (20 points)				
40% (10 points) 99% (25 points)				
Provider's Total SPEP Score			100	[Insert Score]

© Copyright held by Mark W. Lipsey, Peabody Research Institute, Vanderbilt University.
Not to be copied or used without explicit permission.



FY 2015-16: Full Report

- **Service Type:** Type of Intervention.
- **Service Quality:** Seven identified quality indicators.
- **Amount of Service:** Number of weeks and number of hours of service.
- **Juvenile Characteristics:** C-PACT Risk level of youth served.



FY 2015-16: Full Report

- Narrative sections throughout explain scoring categories and scores earned.
- Final summary table gives a snapshot of scores.
- Final narrative includes specific recommendations for improvement

Summary and Recommendations			
Category	Basic Score	Program Optimization Score	Program Optimization Percentage
Primary and Supplemental Service Type			%
Quality of Service Delivery		20	%
Amount of Service: Duration		10	%
Amount of Service: Contact Hours		10	%
Risk Level of Youth Served		25	%
Totals			%



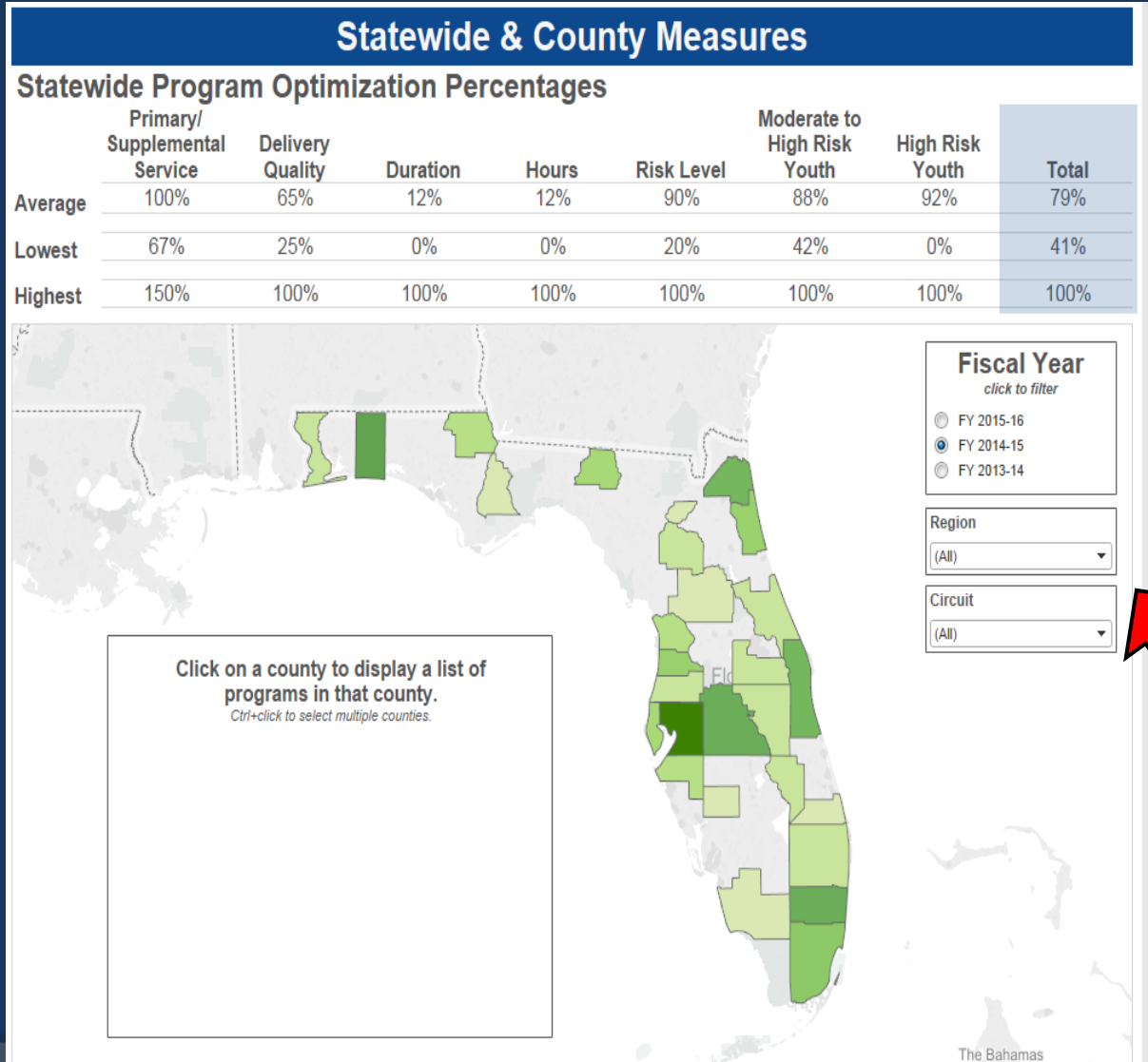
FY 2015-16: Results Dissemination

The screenshot shows the Florida Department of Juvenile Justice website. The header includes the department's logo, name, and tagline "Our Children, Our Future". A search bar is located in the top right. The navigation menu includes links for "Youth & Families", "Partners, Providers & Staff", "Services", "Research", "Employment", and "Get Involved". The "Research" section is active, displaying a sidebar with links: "Research", "About Us", "Reports", "Fast Facts", "Data Integrity / JJIS", "Delinquency Data", "Latest Initiatives", "Institutional Review Board (IRB) Requests", "Contacts", and "Presentations to Stakeholders". The main content area features a "RESEARCH" section with a bar chart and a headline: "Delinquency in Florida on the Decline. Floridians are less likely to be the victim of juvenile crime than at any other time since 1990. Juvenile delinquency has dropped across virtually all categories of offending, including serious and violent offenses. [Read More >](#)". Below this are three columns: "ABOUT US", "REPORTS", and "FAST FACTS". At the bottom, there are three more columns: "DATA INTEGRITY / JJIS", "DELINQUENCY DATA", and "LATEST INITIATIVES". A red circle highlights the "DATA INTEGRITY / JJIS" link in the sidebar.

The FDJJ's Office of Research and Data Integrity built an interactive SPEG dashboard that visually represents the SPEG results.



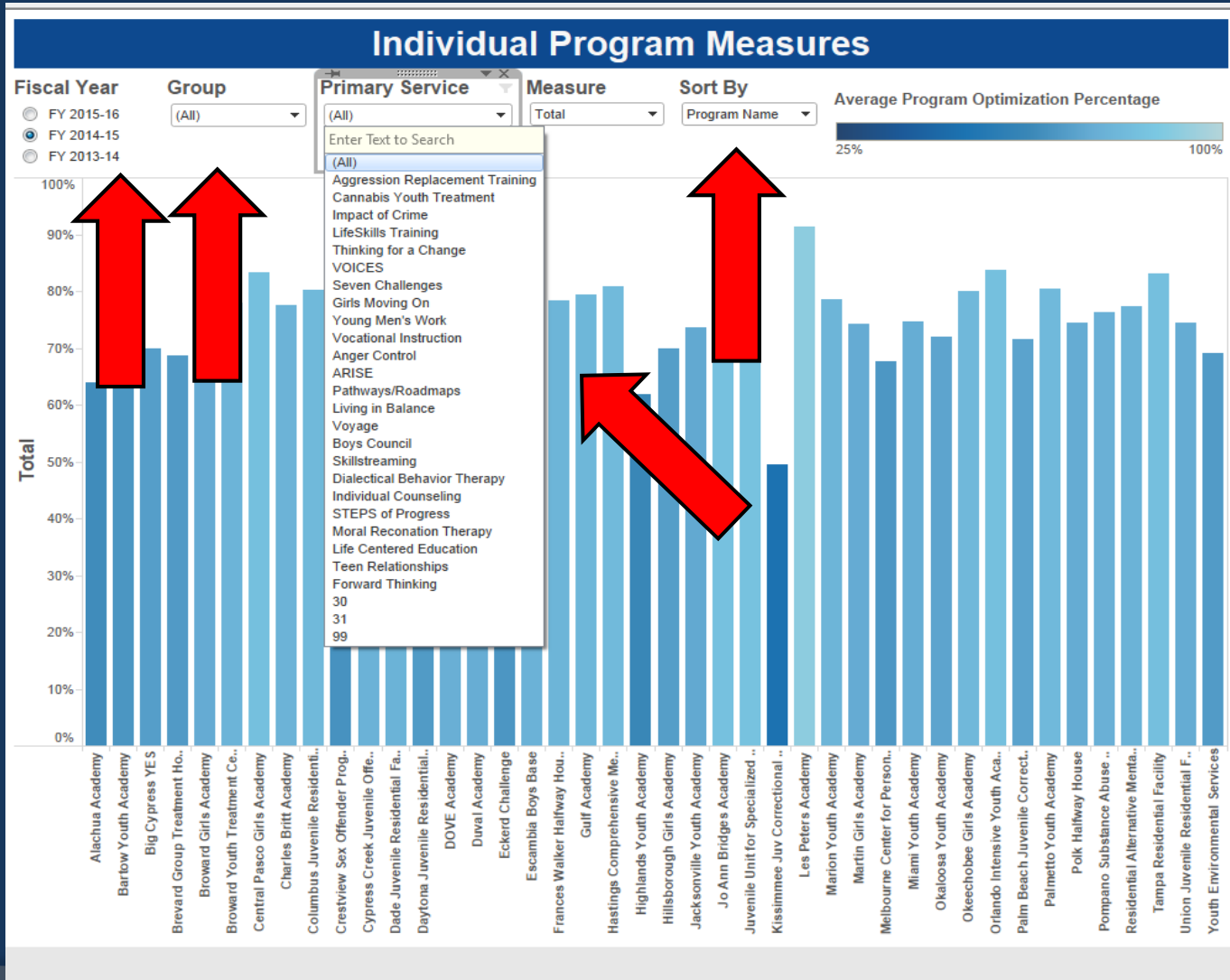
FY 2015-16: Dashboard Data Visualizations



The dashboard allows a user to filter by fiscal year and geographic options to review residential program performance.



FY 2015-16: Dashboard Data Visualizations

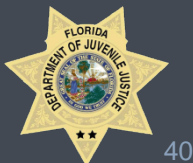


The dashboard allows a user to filter by multiple variables, including: fiscal year, service group, service name, individual measure, and measure.

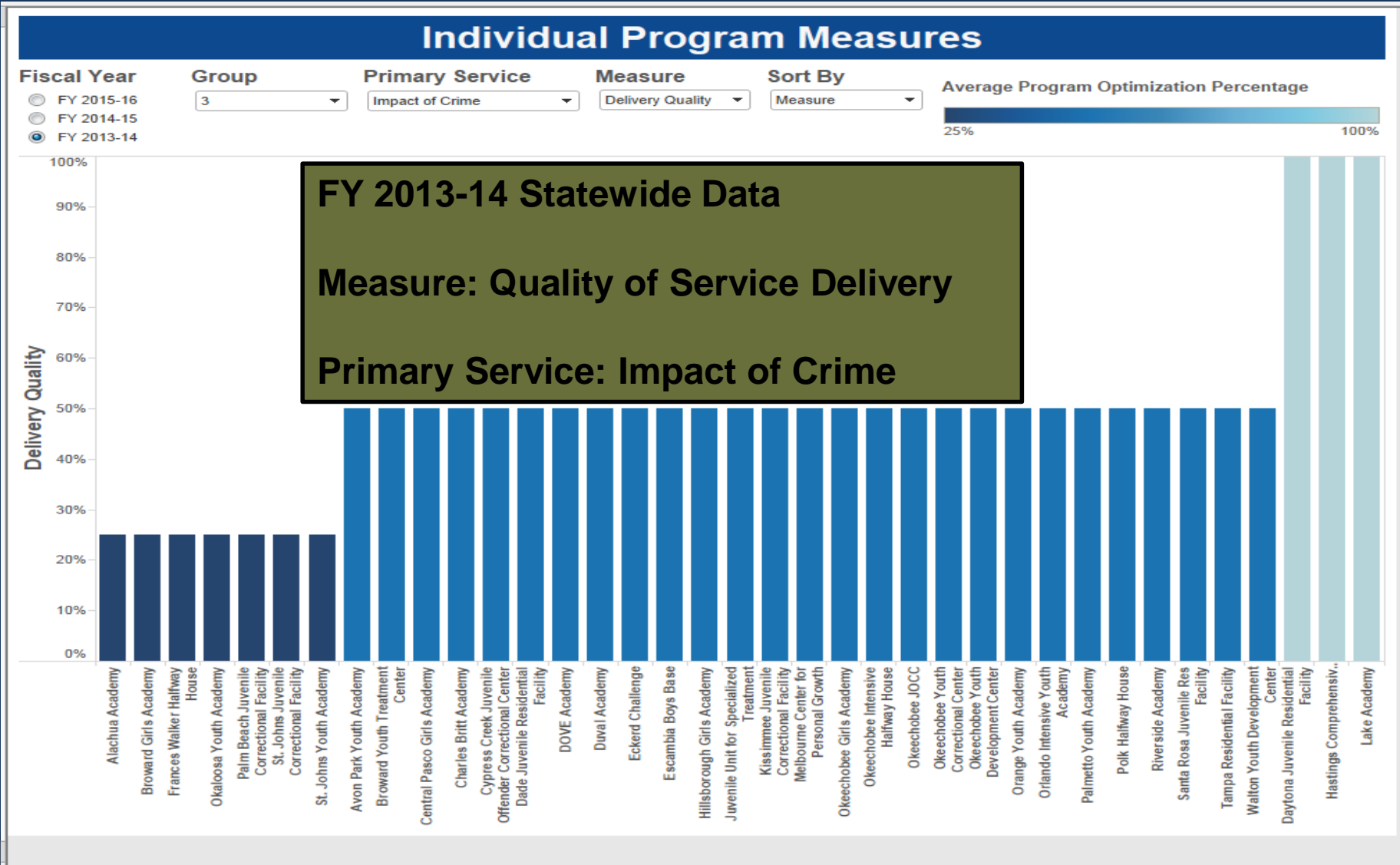


FY 2015-16: Dashboard Data Visualizations

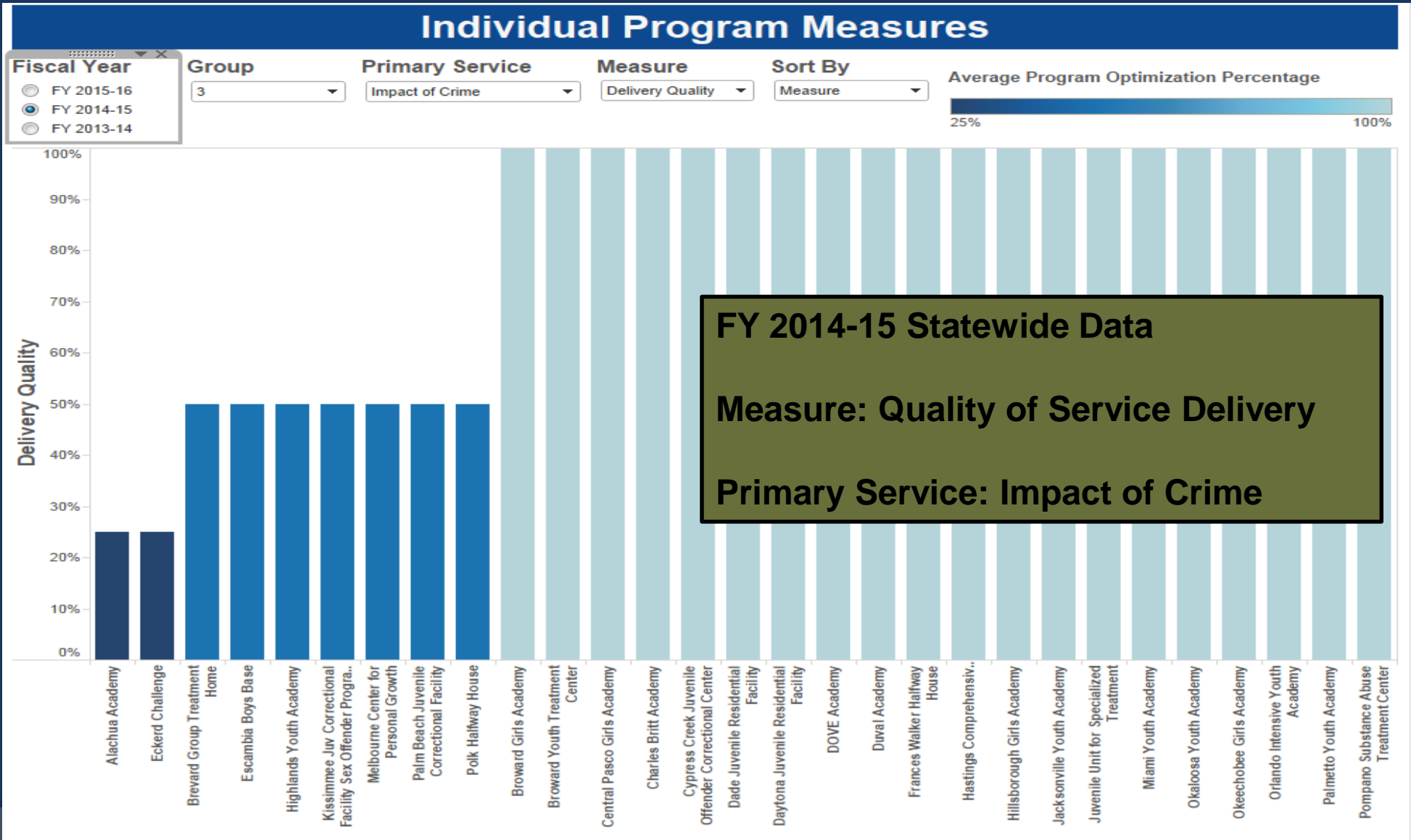
- Data visualizations allow us to observe statewide trends.
- Quality of Service Delivery scores have improved demonstrably from year to year.



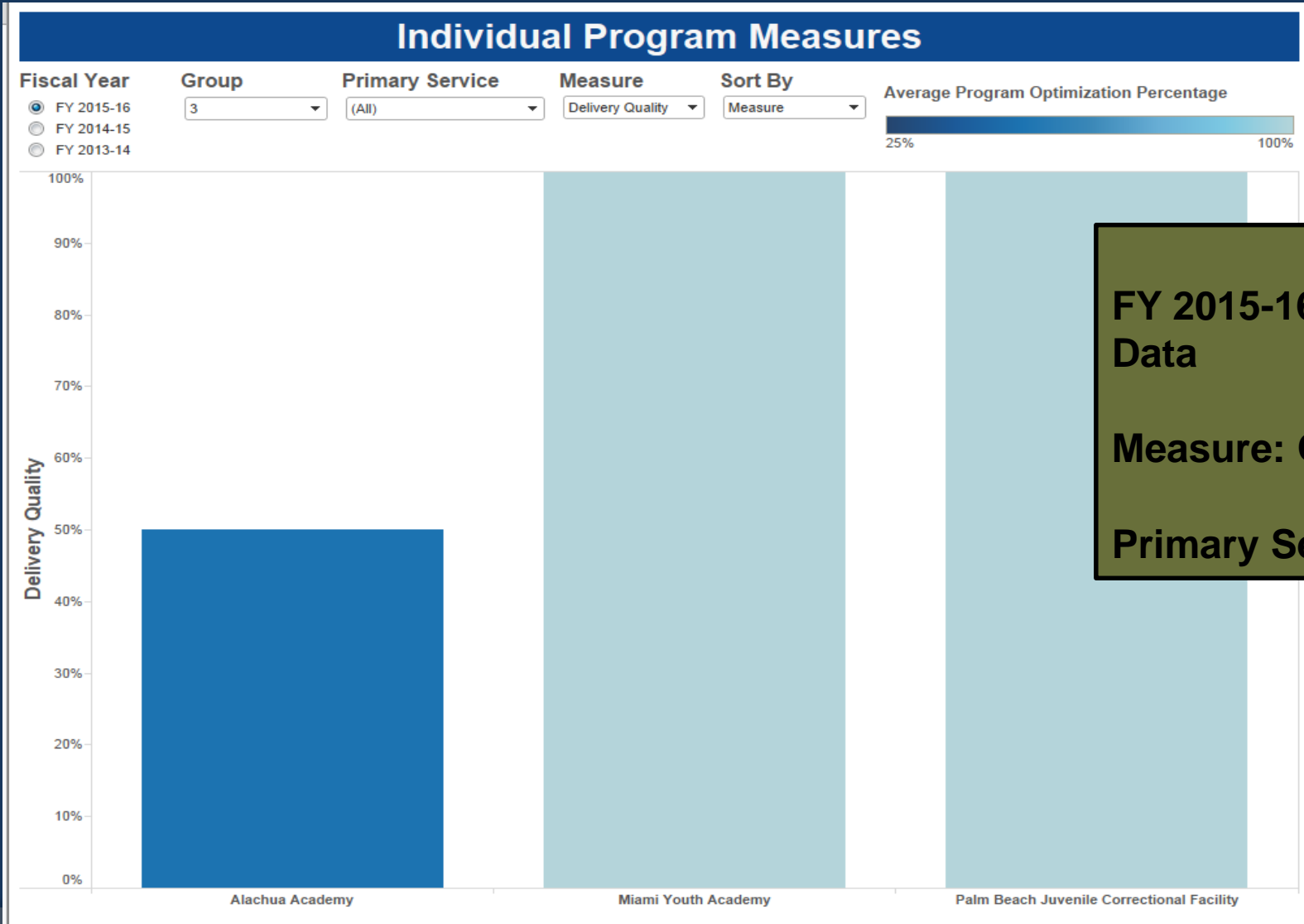
FY 2015-16: Dashboard Data Tracking Changes



FY 2015-16: Dashboard Data Tracking Changes



FY 2015-16: Dashboard Data Tracking Changes



FY 2015-16 (Year To Date) Statewide Data

Measure: Quality of Service Delivery

Primary Service: Impact of Crime



FY 2015-16: Dashboard Data Comparisons

Compare Programs

Fiscal Year

FY 2015-16
 FY 2014-15
 FY 2013-14

Program Name
Palm Beach Juvenile Correctional Facility

Primary Service
Impact of Crime

Program Name	Primary Service	Program Optimization Percentages
Palm Beach Juvenile Correctional Facility	Impact of Crime	Primary/Supplemental Service: 100% Delivery Quality: 25% Duration: 0% Hours: 100% Risk Level: 92% Moderate to High Risk Youth: 83% High Risk Youth: 100% Total: 74%

Fiscal Year

FY 2015-16
 FY 2014-15
 FY 2013-14

Program Name
Palm Beach Juvenile Correctional Facility

Primary Service
Impact of Crime

Program Name	Primary Service	Program Optimization Percentages
Palm Beach Juvenile Correctional Facility	Impact of Crime	Primary/Supplemental Service: 100% Delivery Quality: 100% Duration: 0% Hours: 100% Risk Level: 92% Moderate to High Risk Youth: 83% High Risk Youth: 100% Total: 86%

Compare an individual program's performance from year to year.



FY 2015-16: Dashboard Data Comparisons

Compare Programs

Fiscal Year

FY 2015-16

FY 2014-15

FY 2013-14

Program Name

Miami Youth Academy

Primary Service

Thinking for a Change

Program Name	Primary Service	Program Optimization Percentages
Miami Youth Academy	Thinking for a Change	Primary/Supplemental Service: 100% Delivery Quality: 100% Duration: 0% Hours: 0% Risk Level: 92% Moderate to High Risk Youth: 83% High Risk Youth: 100% Total: 78%

Fiscal Year

FY 2015-16

FY 2014-15

FY 2013-14

Program Name

Palm Beach Juvenile Correctional Facility

Primary Service

Thinking for a Change

Program Name	Primary Service	Program Optimization Percentages
Palm Beach Juvenile Correctional Facility	Thinking for a Change	Primary/Supplemental Service: 100% Delivery Quality: 100% Duration: 40% Hours: 20% Risk Level: 92% Moderate to High Risk Youth: 83% High Risk Youth: 100% Total: 84%

The dashboard allows a user to compare interventions side-by-side across programs.



Florida DJJ's SPEEP Implementation Schedule



Note: FY=fiscal year. Florida's state government fiscal year is July 1st – June 30th.



FY 2016-17: Building the Dataset

- Data will be collected for an additional full year of service.
- Youth who completed services during FY2015-2016 will be tracked to assess for any new law offenses.
- FDJJ's Office of Research and Data Integrity will continue to add data to the SPEP dataset.
- The SPEP dataset will continue to populate the Dashboard.



Florida DJJ's SPEEP Implementation Schedule



Note: FY=fiscal year. Florida's state government fiscal year is July 1st – June 30th.

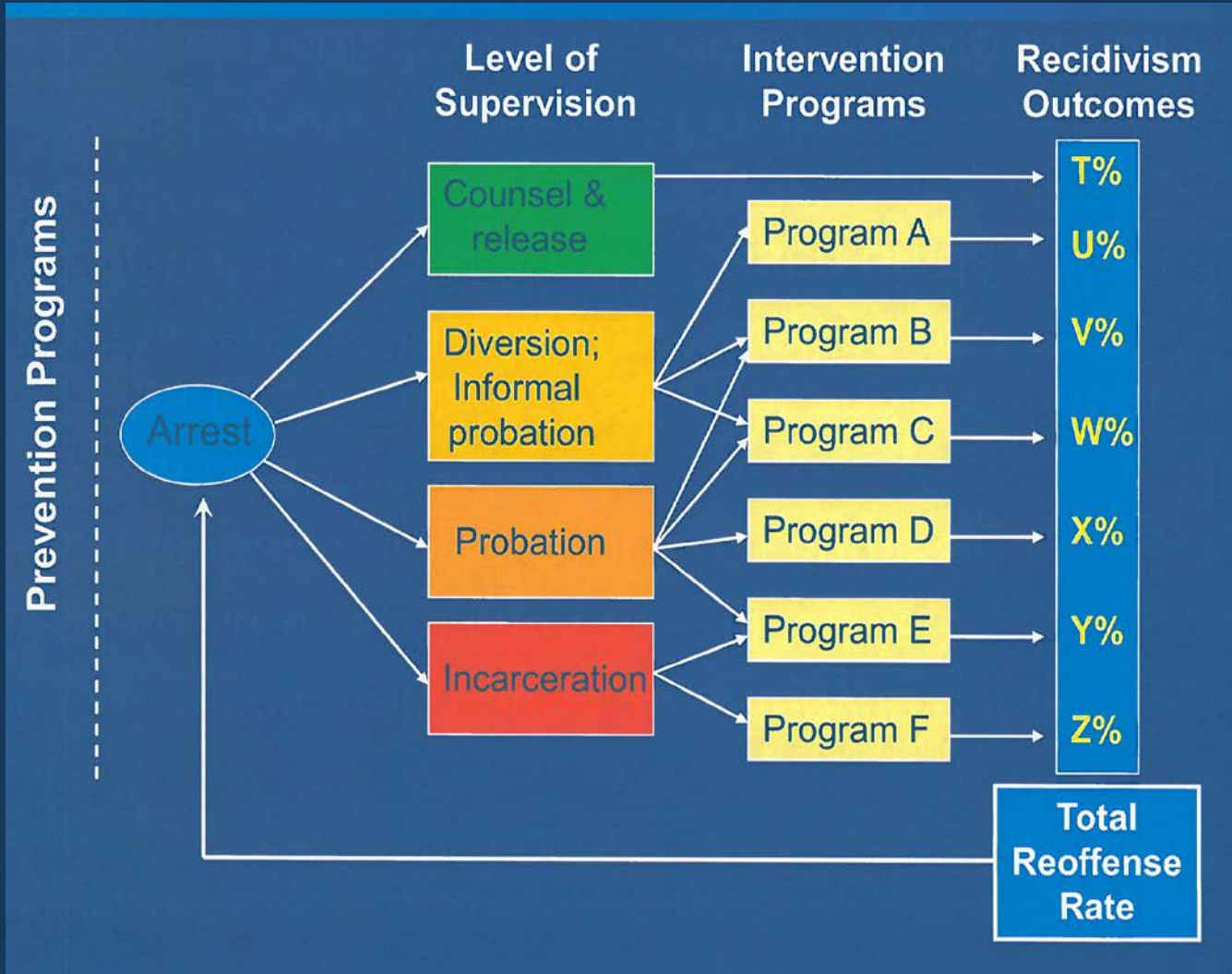


FY 2016-17: Recidivism Data Analysis

- The FDJJ's Office of Research and Data Integrity will analyze the FY2015-2016 data.
- The SPEP will be implemented in community settings for non-residential community providers.



FY 2017-18: Recidivism Data Analysis



FY 2017-18 may yield enough data that the Florida DJJ will analyze preliminary recidivism outcomes for youth who received services.



Florida DJJ's SPEEP Implementation Schedule

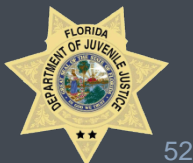


Note: FY=fiscal year. Florida's state government fiscal year is July 1st – June 30th.



FY 2016-17: Recidivism Data Analysis

- The FDJJ will continue to analyze the data and provide technical assistance to providers.
- The SPEP will be a fully-integrated component of FDJJ's evaluation of evidence-based service delivery.



DJJ's Evidence-Based Services Mantra

- The right service
- For the right kid
- At the right time
- In the right dosage





FLORIDA DEPARTMENT OF JUVENILE JUSTICE

PART OF THE COMMUNITY, PART OF THE SOLUTION

Laura Moneyham

Assistant Secretary for Residential Services
2737 Centerview Drive
Tallahassee, FL 32399
Laura.Moneyham@djj.state.fl.us
850-921-4188

Meg Bates

Program and Policy Coordinator
Residential Services
2737 Centerview Drive
Tallahassee, FL 32399
Meg.Bates@djj.state.fl.us
850-717-2539



Relevant Links

Please visit the Department's website for additional information:

- www.djj.state.fl.us
- [http://www.djj.state.fl.us/research/latest-initiatives/juvenile-justice-system-improvement-project-\(jjsip\)/standardized-program-evaluation-protocol-\(spep\)](http://www.djj.state.fl.us/research/latest-initiatives/juvenile-justice-system-improvement-project-(jjsip)/standardized-program-evaluation-protocol-(spep))
- [http://www.djj.state.fl.us/docs/research2/spep-treatment-quality-rating-guide-\(revised-05-23-2014\).pdf?sfvrsn=0](http://www.djj.state.fl.us/docs/research2/spep-treatment-quality-rating-guide-(revised-05-23-2014).pdf?sfvrsn=0)
- <http://www.djj.state.fl.us/partners/our-approach/PACT/CPACT>



References

- Andrews, D., & Bonta, J. (2003). *The Psychology of Criminal Conduct*, 3rd edition. Cincinnati, OH: Anderson Publishing Co.
- Howell, J. (2003). Diffusing research into practice using the comprehensive strategy for serious, violent, and chronic juvenile offenders. *Youth Violence and Juvenile Justice: An Interdisciplinary Journal*, 1, 219-245.
- Lipsey, M., Howell, J., Kelly, M., Chapman, G., & Carver, D. (2010). *Improving the Effectiveness of Juvenile Justice Programs: A new perspective on evidence-based practice*. Center for Juvenile Justice Reform, Georgetown Public Policy Institute, Georgetown University: Washington, DC.
- Luong, D., & Wormith, J.S. (2011). Applying risk/need assessment to probation practice and its impact on the recidivism of young offenders. *Criminal Justice and Behavior*, 38, 1177-1199.

