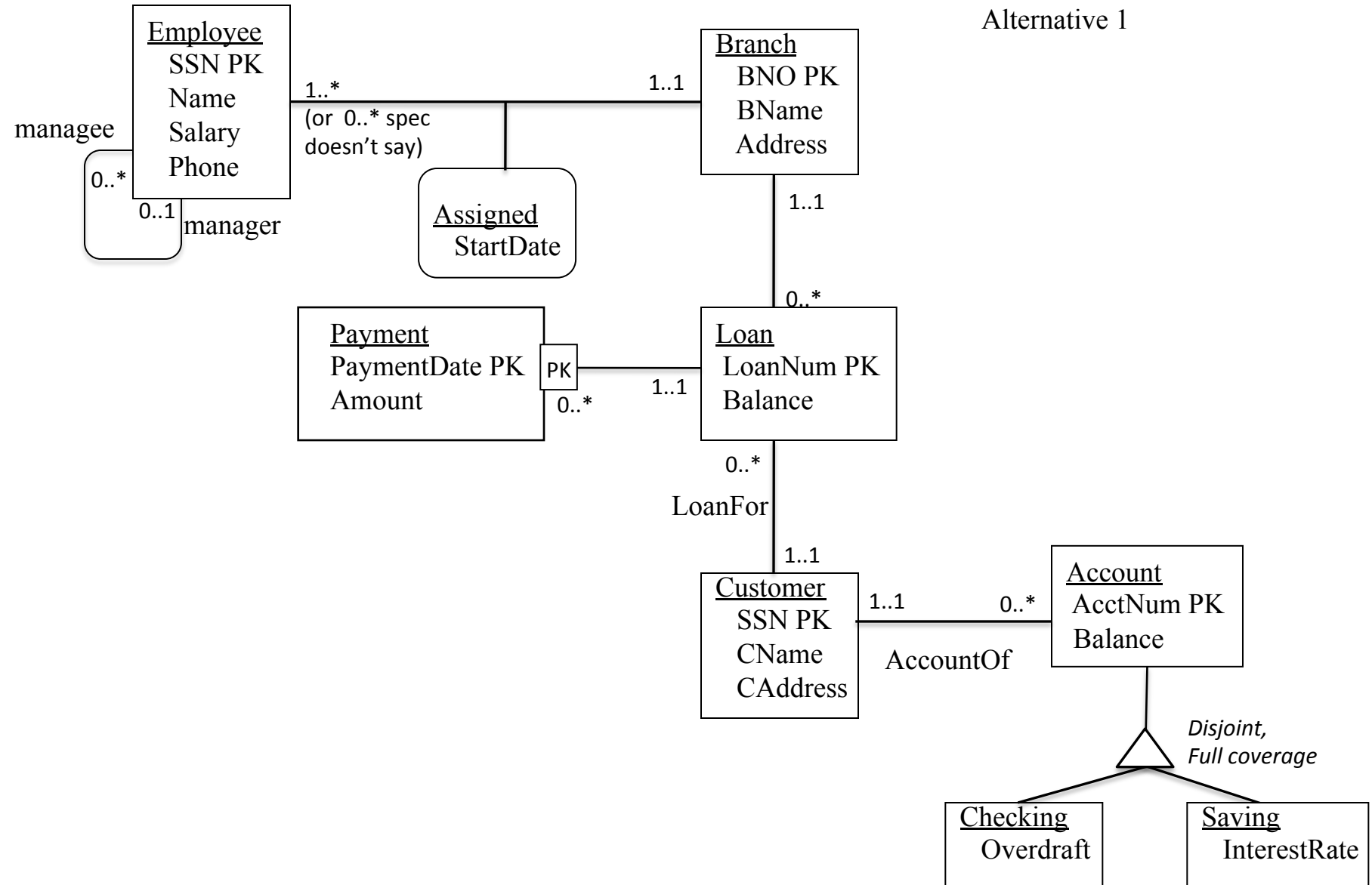
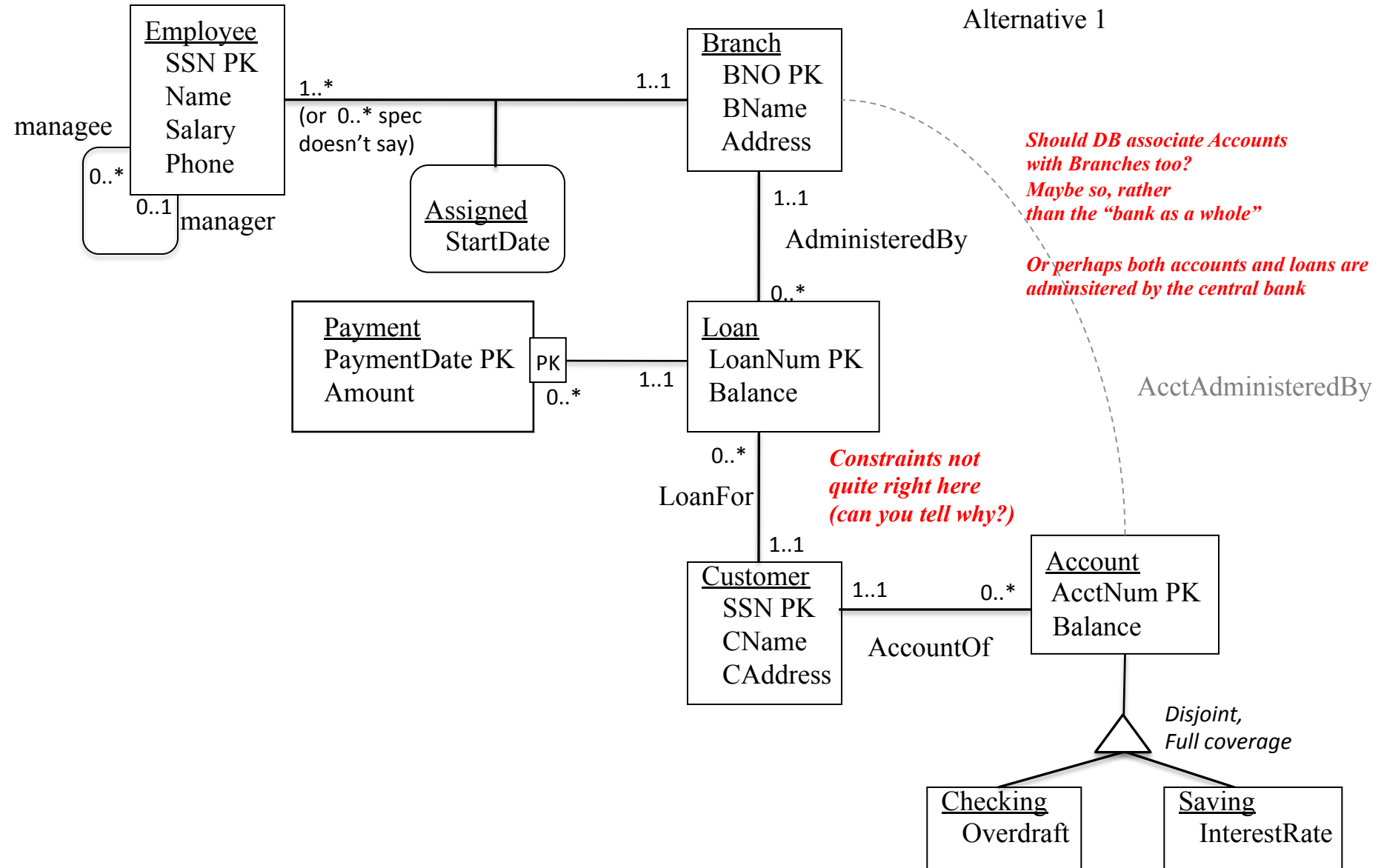


# Answer to In Class Practice UML

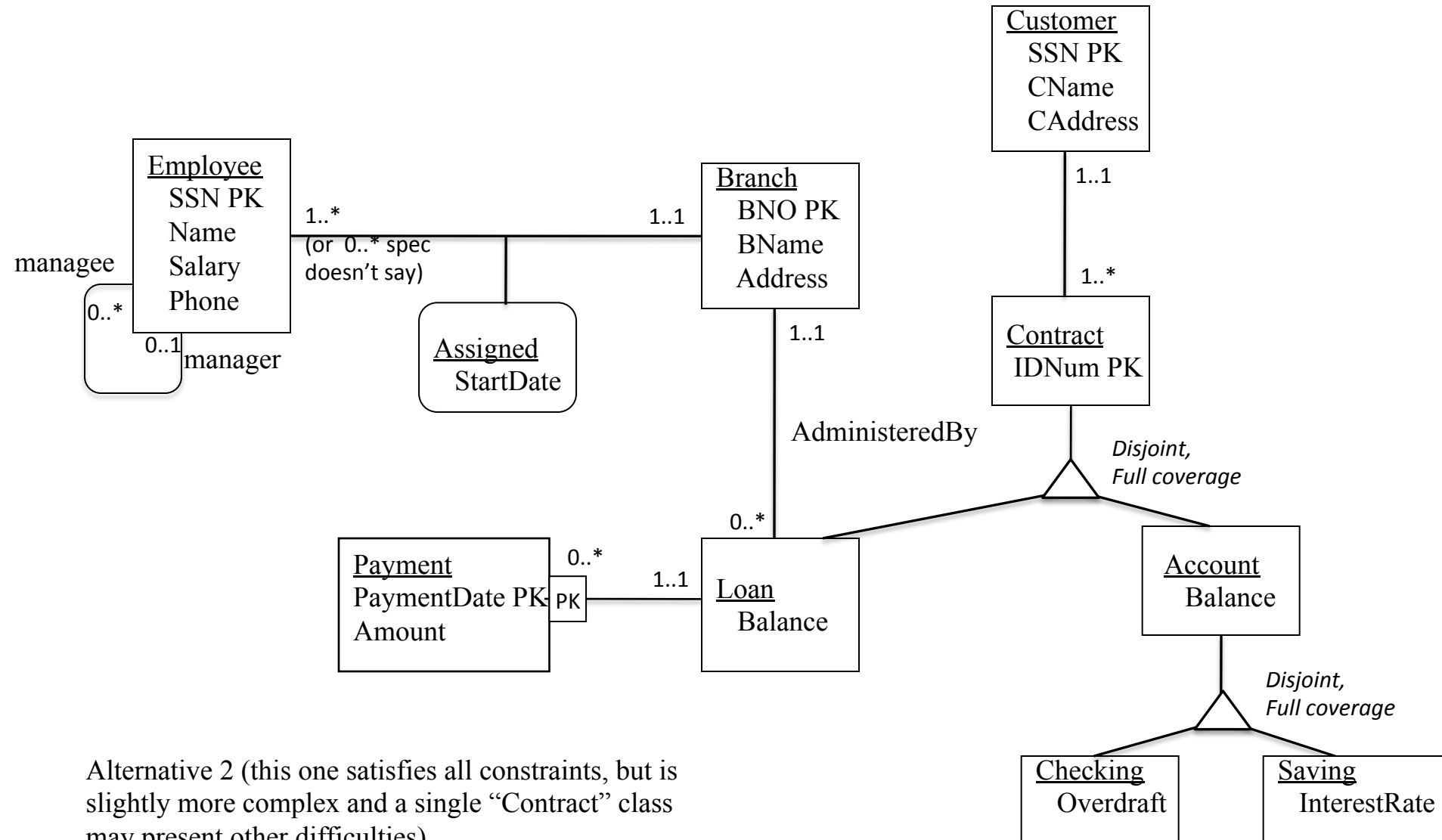
Alternative 1



# Answer to In Class Practice UML



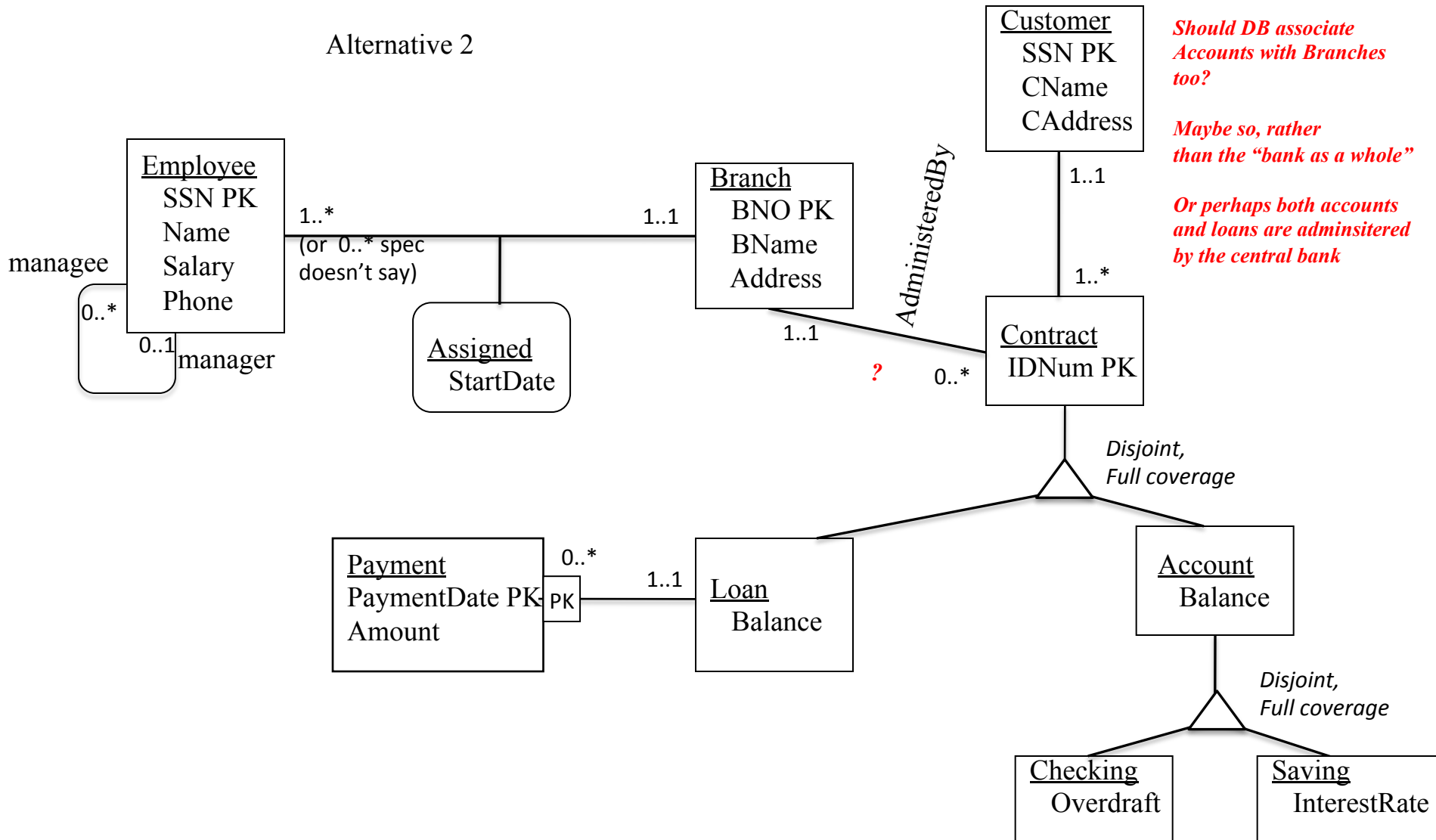
# Answer to In Class Practice UML



Alternative 2 (this one satisfies all constraints, but is slightly more complex and a single "Contract" class may present other difficulties)

# Answer to In Class Practice UML

Alternative 2



*Should DB associate Accounts with Branches too?*

*Maybe so, rather than the "bank as a whole"*

*Or perhaps both accounts and loans are administered by the central bank*