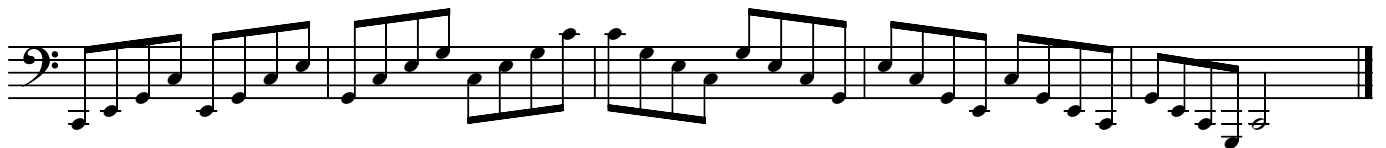
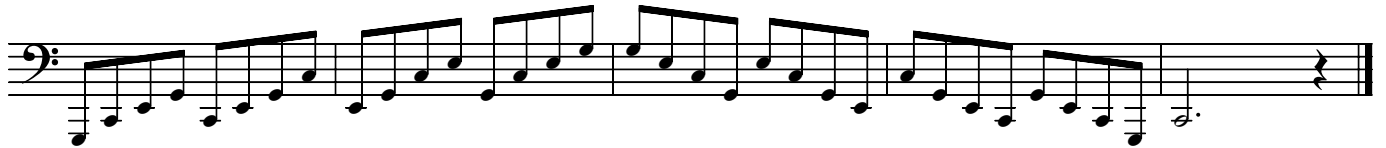


# Scales, Arpeggios, 3rds & Clarkes for Tuba

C Major



F Major

First staff of music in F major, bass clef, featuring a descending eighth-note scale from G4 to Bb3.

Second staff of music in F major, bass clef, featuring an ascending eighth-note scale from Bb3 to G4.

Third staff of music in F major, bass clef, featuring a descending sixteenth-note scale from G4 to Bb3.

Fourth staff of music in F major, bass clef, featuring an ascending sixteenth-note scale from Bb3 to G4.

Fifth staff of music in F major, bass clef, featuring a descending eighth-note scale from G4 to Bb3.

Sixth staff of music in F major, bass clef, featuring an ascending eighth-note scale from Bb3 to G4.

Also play down one octave

Seventh staff of music in F major, bass clef, featuring a descending eighth-note scale from G4 to Bb3, with notes beamed in pairs.

Eighth staff of music in F major, bass clef, featuring an ascending eighth-note scale from Bb3 to G4, with notes beamed in pairs.

Bb Major

This image displays a sheet of music for bass clef in Bb Major, consisting of eight staves of musical notation. The music is written in a single system, with each staff containing a line of music. The notation includes various rhythmic values, such as eighth and sixteenth notes, and rests. The key signature is Bb Major, indicated by two flats (Bb and Eb) in the key signature. The time signature is not explicitly shown but appears to be common time (C). The music is written in a single system, with each staff containing a line of music. The notation includes various rhythmic values, such as eighth and sixteenth notes, and rests. The key signature is Bb Major, indicated by two flats (Bb and Eb) in the key signature. The time signature is not explicitly shown but appears to be common time (C). The music is written in a single system, with each staff containing a line of music. The notation includes various rhythmic values, such as eighth and sixteenth notes, and rests. The key signature is Bb Major, indicated by two flats (Bb and Eb) in the key signature. The time signature is not explicitly shown but appears to be common time (C).

Eb Major

First musical staff in Eb Major, featuring a bass clef, a key signature of two flats (Bb and Eb), and a 2/4 time signature. The melody consists of eighth notes, starting on G2 and ascending to G4, with a final quarter rest.

Second musical staff in Eb Major, continuing the eighth-note melody from the first staff, ending with a quarter rest.

Third musical staff in Eb Major, continuing the eighth-note melody, ending with a quarter rest.

Fourth musical staff in Eb Major, continuing the eighth-note melody, ending with a quarter rest.

Fifth musical staff in Eb Major, continuing the eighth-note melody, ending with a quarter rest.

Sixth musical staff in Eb Major, continuing the eighth-note melody, ending with a quarter rest.

Also play down one ctave

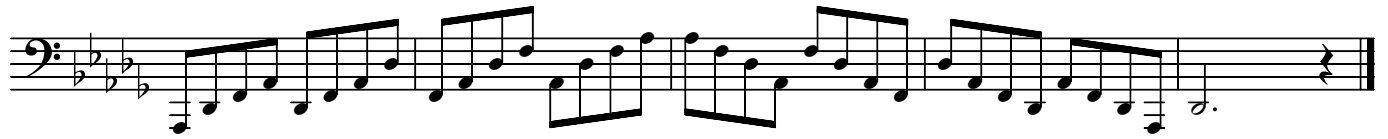
Seventh musical staff in Eb Major, featuring a bass clef, a key signature of two flats, and a 2/4 time signature. The melody consists of eighth notes, starting on G1 and ascending to G4, with a final quarter rest.

Eighth musical staff in Eb Major, featuring a bass clef, a key signature of two flats, and a 2/4 time signature. The melody consists of eighth notes, starting on G1 and ascending to G4, with a final quarter rest.

Ab Major

The image displays a musical score for a piece in Ab Major, consisting of eight staves of bass clef notation. The key signature is two flats (Ab and Cb). The music is written in a single melodic line across the staves. The first staff begins with a series of eighth notes, followed by a quarter rest and a half note. The second staff continues with eighth notes, some beamed together. The third staff features a mix of eighth and sixteenth notes, with some notes beamed. The fourth staff shows a steady flow of eighth notes. The fifth staff has a similar eighth-note pattern with some beaming. The sixth staff continues with eighth notes and some beaming. The seventh staff features a series of eighth notes with a consistent rhythmic pattern. The eighth and final staff concludes with a series of eighth notes and a final whole note.

Db Major



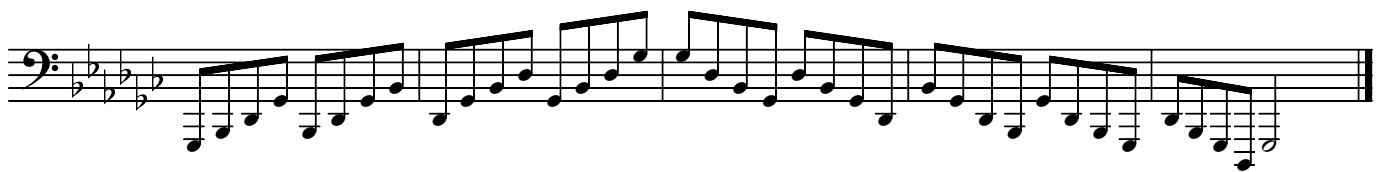
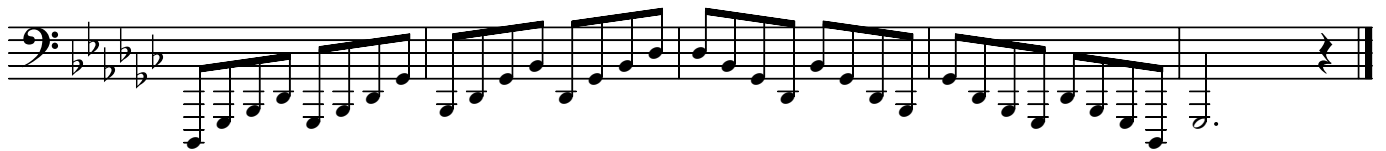
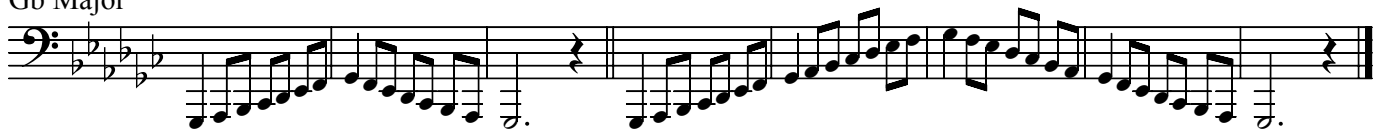
Also work down one octave  
Play last Ab as written



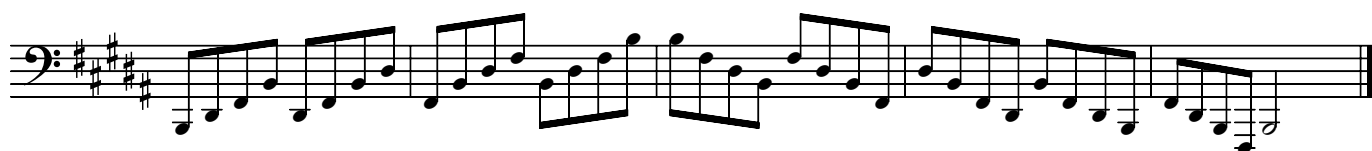
Also work down one octave



Gb Major



B Major





E Major

First staff of music in E Major, featuring a bass clef and a key signature of three sharps (F#, C#, G#). The melody begins with a quarter rest, followed by eighth notes: G#2, A2, B2, C#3, D3, E3, F#3, G#3, A3, B3, C#4, D4, E4. The staff concludes with a quarter rest.

Second staff of music in E Major, continuing the melody with eighth notes: F#4, G#4, A4, B4, C#5, D5, E5, F#5, G#5, A5, B5, C#6, D6, E6. The staff concludes with a quarter rest.

Third staff of music in E Major, featuring a continuous eighth-note scale: F#6, G#6, A6, B6, C#7, D7, E7, F#7, G#7, A7, B7, C#8, D8, E8. The staff concludes with a quarter rest.

Fourth staff of music in E Major, featuring a descending eighth-note scale: D8, C#8, B7, A7, G#7, F#7, E7, D7, C#7, B6, A6, G#6, F#6, E6. The staff concludes with a quarter rest.

Fifth staff of music in E Major, featuring a descending eighth-note scale: D6, C#6, B5, A5, G#5, F#5, E5, D5, C#5, B4, A4, G#4, F#4, E4. The staff concludes with a quarter rest.

Sixth staff of music in E Major, featuring a descending eighth-note scale: D4, C#4, B3, A3, G#3, F#3, E3, D3, C#3, B2, A2, G#2, F#2, E2. The staff concludes with a quarter rest.

Seventh staff of music in E Major, featuring a continuous eighth-note scale: D2, C#2, B1, A1, G#1, F#1, E1, D1, C#1, B0, A0, G#0, F#0, E0. The staff concludes with a quarter rest.

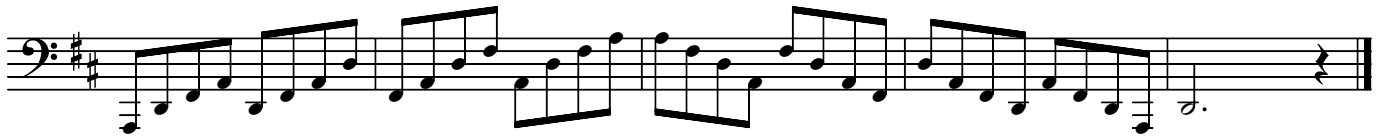
Also play up one octave

Eighth staff of music in E Major, featuring a continuous eighth-note scale: E1, F#1, G#1, A1, B1, C#2, D2, E2, F#2, G#2, A2, B2, C#3, D3, E3. The staff concludes with a quarter rest.

A Major



D Major



G Major

First musical staff in G Major, featuring a bass clef and a key signature of one sharp (F#). The melody consists of eighth notes, starting with a quarter rest followed by a dotted half note, then a series of eighth notes ascending and descending.

Second musical staff in G Major, continuing the melody with eighth notes and quarter notes.

Third musical staff in G Major, continuing the melody with eighth notes and quarter notes.

Fourth musical staff in G Major, continuing the melody with eighth notes and quarter notes.

Fifth musical staff in G Major, continuing the melody with eighth notes and quarter notes.

Sixth musical staff in G Major, continuing the melody with eighth notes and quarter notes.

Seventh musical staff in G Major, continuing the melody with eighth notes and quarter notes.

Eighth musical staff in G Major, continuing the melody with eighth notes and quarter notes.