

F

Major



Musical notation for the F Major scale in bass clef, common time signature. The scale is written as a continuous line of eighth notes.

Natural Minor



Musical notation for the F Natural Minor scale in bass clef, common time signature. The scale is written as a continuous line of eighth notes.

Harmonic Minor



Musical notation for the F Harmonic Minor scale in bass clef, common time signature. The scale is written as a continuous line of eighth notes.

Melodic Minor



Musical notation for the F Melodic Minor scale in bass clef, common time signature. The scale is written as a continuous line of eighth notes.

Whole Tone



Musical notation for the F Whole Tone scale in bass clef, 3/4 time signature. The scale is written as a continuous line of eighth notes.

Chromatic



Musical notation for the F Chromatic scale in bass clef, common time signature. The scale is written as a continuous line of eighth notes.



Musical notation for the F Chromatic scale in bass clef, common time signature. The scale is written as a continuous line of eighth notes.

Arpeggios

Major



Musical notation for the F Major arpeggios in bass clef, common time signature. The arpeggios are written as groups of three notes.

Minor



Musical notation for the F Minor arpeggios in bass clef, common time signature. The arpeggios are written as groups of three notes.

Augmented



Musical notation for the F Augmented arpeggios in bass clef, common time signature. The arpeggios are written as groups of three notes.

Diminished



Musical notation for the F Diminished arpeggios in bass clef, common time signature. The arpeggios are written as groups of three notes.

G

Major

Musical notation for the G Major scale in bass clef, common time signature. The scale is written as a single melodic line.

Natural Minor

Musical notation for the G Natural Minor scale in bass clef, common time signature. The scale is written as a single melodic line.

Harmonic Minor

Musical notation for the G Harmonic Minor scale in bass clef, common time signature. The scale is written as a single melodic line.

Melodic Minor

Musical notation for the G Melodic Minor scale in bass clef, common time signature. The scale is written as a single melodic line.

Whole Tone

Musical notation for the G Whole Tone scale in bass clef, 3/4 time signature. The scale is written as a single melodic line.

Chromatic

Musical notation for the G Chromatic scale in bass clef, common time signature. The scale is written as a single melodic line.

Musical notation for the G Chromatic scale in bass clef, common time signature. The scale is written as a single melodic line.

Arpeggios

Major

Musical notation for the G Major arpeggios in bass clef, common time signature. The scale is written as a single melodic line.

Minor

Musical notation for the G Minor arpeggios in bass clef, common time signature. The scale is written as a single melodic line.

Augmented

Musical notation for the G Augmented arpeggios in bass clef, common time signature. The scale is written as a single melodic line.

Diminished

Musical notation for the G Diminished arpeggios in bass clef, common time signature. The scale is written as a single melodic line.

A \flat

Major



Musical notation for the A-flat Major scale in bass clef, common time signature. The scale consists of the notes: A \flat , B \flat , C, D, E, F, G, A \flat .

Natural Minor



Musical notation for the A-flat Natural Minor scale in bass clef, common time signature. The scale consists of the notes: A \flat , B \flat , C, D, E \flat , F, G, A \flat .

Harmonic Minor



Musical notation for the A-flat Harmonic Minor scale in bass clef, common time signature. The scale consists of the notes: A \flat , B \flat , C, D, E \flat , F, G \sharp , A \flat . The notes G \sharp and E \flat are marked with an 'x'.

Melodic Minor



Musical notation for the A-flat Melodic Minor scale in bass clef, common time signature. The scale consists of the notes: A \flat , B \flat , C, D, E \flat , F, G \sharp , A \flat . The notes G \sharp and E \flat are marked with an 'x'. The notes G \sharp and A \flat are circled and labeled with a sharp and a flat respectively.

Whole Tone



Musical notation for the A-flat Whole Tone scale in bass clef, 3/4 time signature. The scale consists of the notes: A \flat , B \flat , C, D, E \flat , F, G, A \flat .

Chromatic



Musical notation for the A-flat Chromatic scale in bass clef, common time signature. The scale consists of the notes: A \flat , A \flat \flat , B \flat , B \flat \flat , C, C \sharp , D, D \flat , E \flat , E \flat \flat , F, F \sharp , G, G \flat , A \flat . The notes A \flat \flat , C \sharp , E \flat \flat , and F \sharp are marked with a '6'.



Musical notation for the A-flat Chromatic scale in bass clef, common time signature. The scale consists of the notes: A \flat , A \flat \flat , B \flat , B \flat \flat , C, C \sharp , D, D \flat , E \flat , E \flat \flat , F, F \sharp , G, G \flat , A \flat . The notes A \flat \flat , C \sharp , E \flat \flat , and F \sharp are marked with a '6'.

Arpeggios

Major



Musical notation for the A-flat Major arpeggios in bass clef, common time signature. The scale consists of the notes: A \flat , B \flat , C, D, E, F, G, A \flat . The notes A \flat , B \flat , and C are marked with a '3'.

Minor



Musical notation for the A-flat Minor arpeggios in bass clef, common time signature. The scale consists of the notes: A \flat , B \flat , C, D, E \flat , F, G, A \flat . The notes A \flat , B \flat , and C are marked with a '3'.

Augmented



Musical notation for the A-flat Augmented arpeggios in bass clef, common time signature. The scale consists of the notes: A \flat , B \flat , C, D, E, F, G, A \flat . The notes A \flat , B \flat , and C are marked with a '3'.

Diminished



Musical notation for the A-flat Diminished arpeggios in bass clef, common time signature. The scale consists of the notes: A \flat , B \flat , C, D, E \flat , F, G, A \flat . The notes A \flat , B \flat , and C are marked with a '3'.

A

Major

Musical notation for the Major scale in bass clef, 4/4 time signature. The scale starts on C2 and ends on C3.

Natural Minor

Musical notation for the Natural Minor scale in bass clef, 4/4 time signature. The scale starts on C2 and ends on C3.

Harmonic Minor

Musical notation for the Harmonic Minor scale in bass clef, 4/4 time signature. The scale starts on C2 and ends on C3.

Melodic Minor

Musical notation for the Melodic Minor scale in bass clef, 4/4 time signature. The scale starts on C2 and ends on C3.

Whole Tone

Musical notation for the Whole Tone scale in bass clef, 3/4 time signature. The scale starts on C2 and ends on C3.

Chromatic

Musical notation for the Chromatic scale in bass clef, 4/4 time signature, ascending. The scale starts on C2 and ends on C3.

Musical notation for the Chromatic scale in bass clef, 4/4 time signature, descending. The scale starts on C3 and ends on C2.

Arpeggios

Major

Musical notation for Major arpeggios in bass clef, 4/4 time signature. The scale starts on C2 and ends on C3.

Minor

Musical notation for Minor arpeggios in bass clef, 4/4 time signature. The scale starts on C2 and ends on C3.

Augmented

Musical notation for Augmented arpeggios in bass clef, 4/4 time signature. The scale starts on C2 and ends on C3.

Diminished

Musical notation for Diminished arpeggios in bass clef, 4/4 time signature. The scale starts on C2 and ends on C3.

B \flat

Major

Major scale in B-flat, bass clef, common time signature. The scale is written as a single melodic line.

Natural Minor

Natural minor scale in B-flat, bass clef, common time signature. The scale is written as a single melodic line.

Harmonic Minor

Harmonic minor scale in B-flat, bass clef, common time signature. The scale is written as a single melodic line.

Melodic Minor

Melodic minor scale in B-flat, bass clef, common time signature. The scale is written as a single melodic line.

Whole Tone

Whole tone scale in B-flat, bass clef, 3/4 time signature. The scale is written as a single melodic line.

Chromatic

Chromatic scale in B-flat, bass clef, common time signature. The scale is written as a single melodic line.

Chromatic scale in B-flat, bass clef, common time signature. The scale is written as a single melodic line.

Arpeggios

Major

Major arpeggios in B-flat, bass clef, common time signature. The scale is written as a single melodic line.

Minor

Minor arpeggios in B-flat, bass clef, common time signature. The scale is written as a single melodic line.

Augmented

Augmented arpeggios in B-flat, bass clef, common time signature. The scale is written as a single melodic line.

Diminished

Diminished arpeggios in B-flat, bass clef, common time signature. The scale is written as a single melodic line.

B

Major

Natural Minor

Harmonic Minor

Melodic Minor

Whole Tone

Chromatic

Arpeggios

Major

Minor

Augmented

Diminished

C

Major



Musical notation for the C Major scale in bass clef, common time signature. The scale is written as a continuous line of eighth notes: C2, D2, E2, F2, G2, A2, B2, C3, D3, E3, F3, G3, A3, B3, C4.

Natural Minor



Musical notation for the C Natural Minor scale in bass clef, one flat time signature. The scale is written as a continuous line of eighth notes: C2, D2, E2, F2, G2, A2, B2, C3, D3, E3, F3, G3, A3, B3, C4.

Harmonic Minor



Musical notation for the C Harmonic Minor scale in bass clef, one flat time signature. The scale is written as a continuous line of eighth notes: C2, D2, E2, F2, G2, A2, B2, C3, D3, E3, F#3, G3, A3, B3, C4.

Melodic Minor



Musical notation for the C Melodic Minor scale in bass clef, one flat time signature. The scale is written as a continuous line of eighth notes: C2, D2, E2, F2, G2, A2, B2, C3, D3, E3, F#3, G3, A3, B3, C4. The notes F#3 and G3 are marked with a flat symbol (b) above them.

Whole Tone



Musical notation for the C Whole Tone scale in bass clef, 3/4 time signature. The scale is written as a continuous line of eighth notes: C2, D2, E2, F2, G2, A2, B2, C3, D3, E3, F3, G3, A3, B3, C4.

Chromatic



Musical notation for the C Chromatic scale in bass clef, common time signature. The scale is written as a continuous line of eighth notes: C2, C#2, D2, D#2, E2, E#2, F2, F#2, G2, G#2, A2, A#2, B2, B#2, C3, D3, E3, F3, G3, A3, B3, C4. The notes C#2, D#2, E#2, F#2, G#2, A#2, B#2 are marked with a flat symbol (b) above them. The number 6 is written above the notes C#2, D#2, E#2, F#2, G#2, A#2, B#2 and below the notes C3, D3, E3, F3, G3, A3, B3.

Arpeggios

Major



Musical notation for C Major arpeggios in bass clef, common time signature. The scale is written as a continuous line of eighth notes: C2, D2, E2, F2, G2, A2, B2, C3, D3, E3, F3, G3, A3, B3, C4. The notes C2, D2, E2, F2, G2, A2, B2, C3, D3, E3, F3, G3, A3, B3, C4 are marked with a 3 above them.

Minor



Musical notation for C Minor arpeggios in bass clef, common time signature. The scale is written as a continuous line of eighth notes: C2, D2, E2, F2, G2, A2, B2, C3, D3, E3, F3, G3, A3, B3, C4. The notes C2, D2, E2, F2, G2, A2, B2, C3, D3, E3, F3, G3, A3, B3, C4 are marked with a 3 above them.

Augmented



Musical notation for C Augmented arpeggios in bass clef, common time signature. The scale is written as a continuous line of eighth notes: C2, D2, E2, F#2, G2, A2, B2, C3, D3, E3, F#3, G3, A3, B3, C4. The notes F#2, F#3 are marked with a flat symbol (b) above them. The notes C2, D2, E2, F#2, G2, A2, B2, C3, D3, E3, F#3, G3, A3, B3, C4 are marked with a 3 above them.

Diminished



Musical notation for C Diminished arpeggios in bass clef, common time signature. The scale is written as a continuous line of eighth notes: C2, D2, E2, F2, G2, A2, B2, C3, D3, E3, F3, G3, A3, B3, C4. The notes C2, D2, E2, F2, G2, A2, B2, C3, D3, E3, F3, G3, A3, B3, C4 are marked with a 3 above them.

D \flat

Major



Natural Minor



Harmonic Minor



Melodic Minor



Whole Tone



Chromatic



Arpeggios



Augmented



D

Major



Natural Minor



Harmonic Minor



Melodic Minor



Whole Tone



Chromatic



Arpeggios



Augmented



E \flat

Major



Natural Minor



Harmonic Minor



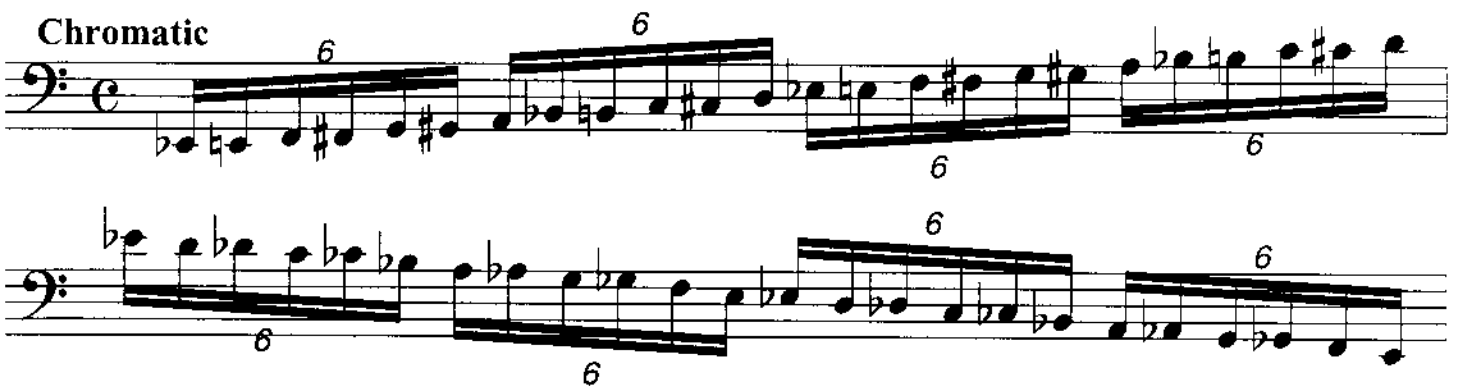
Melodic Minor



Whole Tone



Chromatic



Arpeggios



Augmented



E

Major



Natural Minor



Harmonic Minor



Melodic Minor



Whole Tone



Chromatic



Arpeggios

Major



Minor



Augmented



Diminished



F

Major



Natural Minor



Harmonic Minor



Melodic Minor



Whole Tone



Chromatic



Arpeggios

Major

Minor



Augmented

Diminished

