

Low Range Progression Study 1

Allen

*repeat each line if time allows

Tuba

9

17

25

33

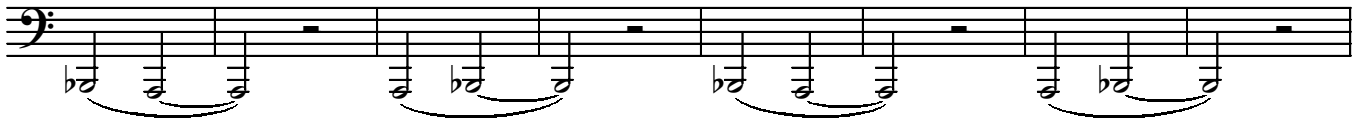
41

49

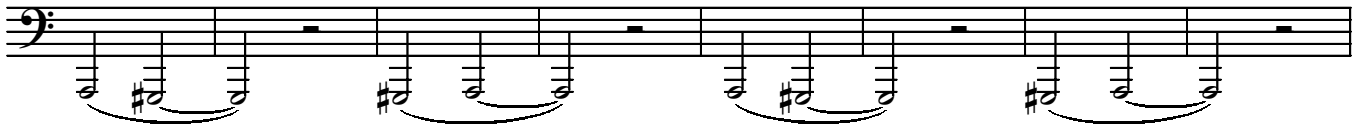
57

*All Studies should be continued to the lowest controlable key

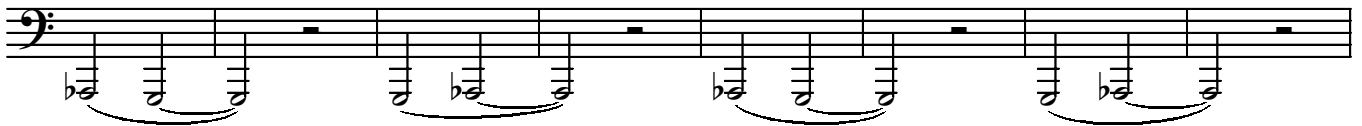
65



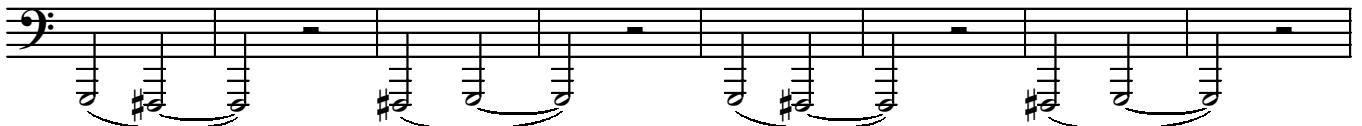
73



81



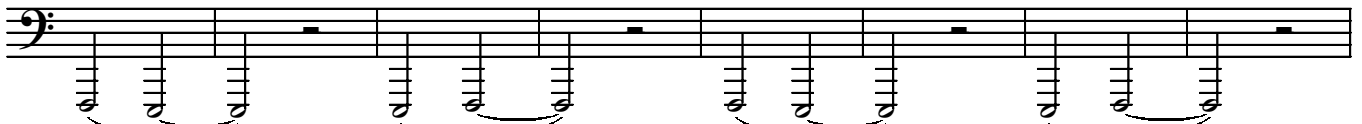
89



97



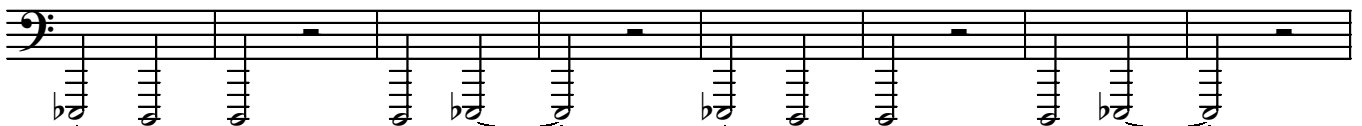
105



113



121



*All Studies should be continued to the lowest controlable key

129

Musical staff for measure 129, featuring a bass clef and a series of eighth notes grouped in pairs, with a flat sign below the first note of each pair.

137

Musical staff for measure 137, featuring a bass clef and a series of eighth notes grouped in pairs, with a sharp sign below the second note of each pair.

145

Musical staff for measure 145, featuring a bass clef and a series of eighth notes grouped in pairs, with a flat sign below the first note of each pair.

153

Musical staff for measure 153, featuring a bass clef and a series of eighth notes grouped in pairs, with a sharp sign below the second note of each pair.

161

Musical staff for measure 161, featuring a bass clef and a series of eighth notes grouped in pairs, with a flat sign below the first note of each pair.

169

Musical staff for measure 169, featuring a bass clef and a series of eighth notes grouped in pairs, with a flat sign below the first note of each pair.

177

Musical staff for measure 177, featuring a bass clef and a series of eighth notes grouped in pairs, with a sharp sign below the second note of each pair.

185

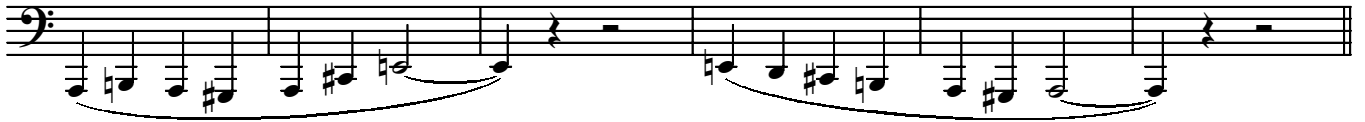
Musical staff for measure 185, featuring a bass clef and a series of eighth notes grouped in pairs, with a flat sign below the first note of each pair.

*All Studies should be continued to the lowest controlable key

193



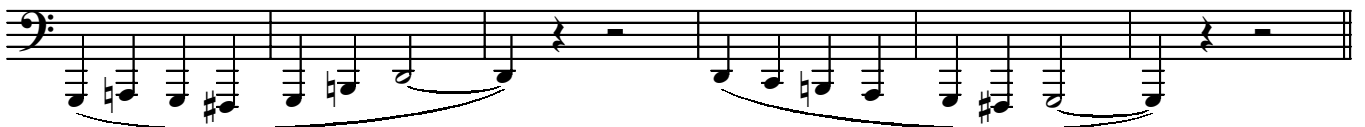
199



205



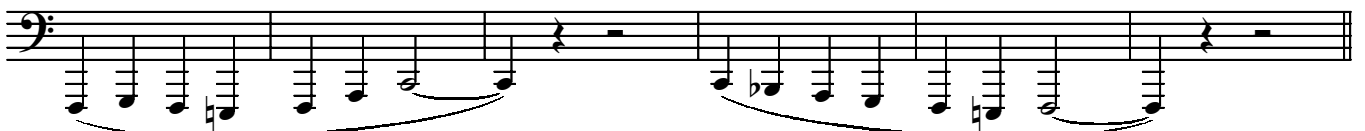
211



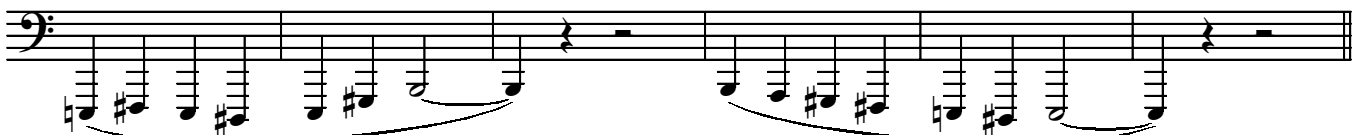
217



223



229



235



*All Studies should be continued to the lowest controlable key

241



245



249



253



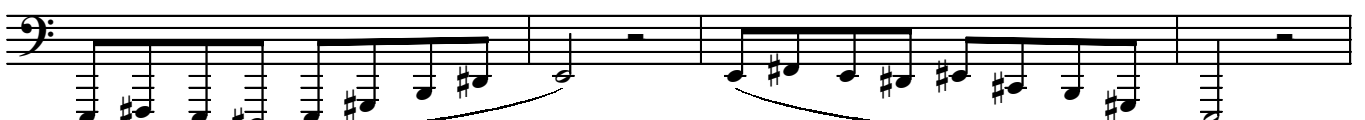
257



261



265



269



*All Studies should be continued to the lowest controlable key