



EHS Assist Laser Inventory Guide

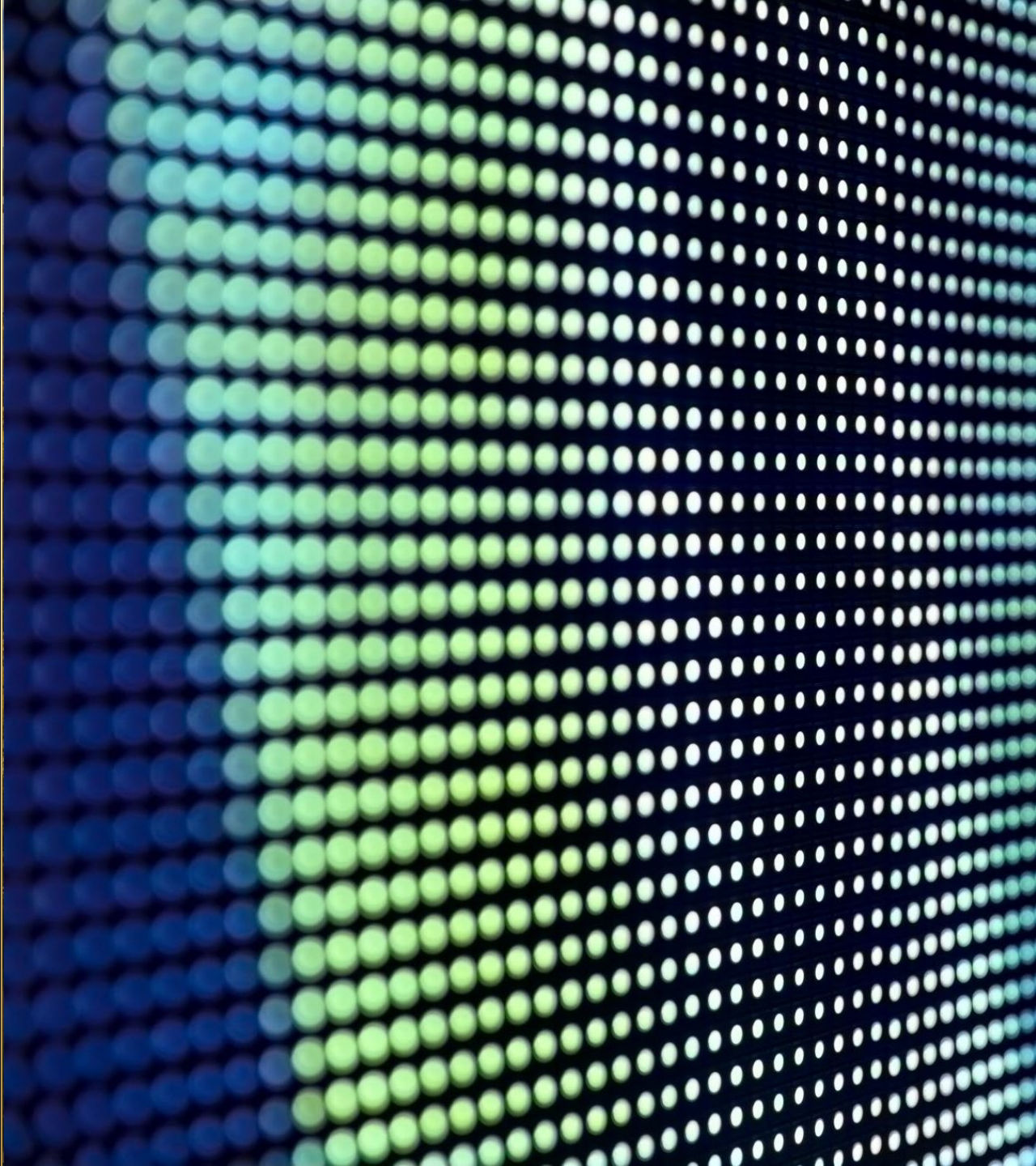




Table of Contents

Title	Page
Accessing the PI Equipment Module	03
The Associated Equipment Page	04
How to Create a Laser Listing Report	05

Accessing the PI Equipment Module

Step 1

Login into EHS Assist - <https://ehsa.vanderbilt.edu>

- ❖ **For Vanderbilt University individuals**, use your VUNetID and VU password, along with the Duo app for SSO authentication
- ❖ **For VUMC individuals**, use your VUMC email and you will be taken to the VUMC SSO page for authentication.

Step 2

From the EHSA Homepage, select the **PI Equipment** icon.



The Associated Equipment Page

The Associated Equipment page displays all equipment associated to a PI or Lab Manager. Equipment Types will only display if attached to a correlating EHSA Permit. Permit types consist of the letter of the permit followed by the VUNetID of the PI or Lab Manager (ex. L-johnsr)

L-Permits will show Lasers and Laser Registration, B-Permits will show Biosafety Cabinets, C-Permits will show Fume Hoods, R-Permits will show Meters, EMFs and X-rays.

1 Selectable **Equipment Types**

2 **Active Equipment**

3 **Equipment Histories** show dates and results of past inspections.

EHSA Equipment / Associated Equipment

PI: Test, PI

EQUIPMENT TYPE

- Lasers
- Fume Hoods
- Laser Registration

Grayed Equipment is Archived Equipment Reports Options

Serial #	Manufacturer	Model	Type	Class	Next Due	Frequency	Status
Active							
1071	Other	Capella R-1470 Prototype	Laser Diodes	4	06-07-2023	12	Active
1041	Other	Capella R1850	Laser Diodes	4	06-07-2023	12	Active
10	Other	Capella R1850	Laser Diodes	4	06-07-2023	12	Active

Red Equipment is Overdue

Date	History Type	Status	Results	Next Due
06-07-2022	Inspection-12	Complete	Pass	06-07-2023

How to Create a Laser Listing Report

A **Laser Listing** report can be generated to display all the active lasers associated with a PI.

1 Click the **Equipment Reports** dropdown and select **Laser Listing**.

2 The **Report Parameters** window appears with the PI field auto-generated.

3 Click the **View Report** button to generate the report.**

4 A PDF report is generated displaying information about the active lasers.

Grayed Equipment is Archived

Equipment Reports ▾

1 Laser Listing

Fume Hood Listing

▲ Active

Report Parameters

P.I./Supervisor *No Selections = All

Test, PI ×

2

3

Cancel View Report

6/12/2023

4

Laser Listing

Vanderbilt University

Test, PI

Serial #	Manufacturer	Model Type	Department	Building Name	Lab/Room	Inspection Frg.	Due	Wavelength	Class
1071	Other	Capella R-1470 Prototype	Biomedical Engineering	KECK FREE ELECTRON LASER CTR	215	12	06/07/2023	Variable (1400-1500 nm)	4
1041	Other	Capella R1850	Biomedical Engineering	KECK FREE ELECTRON LASER CTR	215	12	06/07/2023	Variable (1800-2000 nm)	4
10	Other	Capella R1850	Biomedical Engineering	KECK FREE ELECTRON LASER CTR	205	12	06/07/2023	Variable (1800-2000 nm)	4

**This report can be further customized. Contact the EHSA Administrator at ehsa@vanderbilt.edu for more information.

EHS Assist – Additional Info

Find additional EHS Assist guides here:

<https://www.vanderbilt.edu/ehs/ehsassist>

With any questions, concerns or suggestions, contact the EHS Assist Administrator - **ehsa@vanderbilt.edu**



VANDERBILT
UNIVERSITY