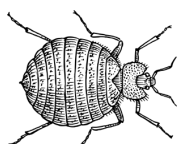




Lab 5: Bioinformatics III

Wolbachia Identification & Naming

Project
Guide



The Wolbachia Project

Page	Contents
	Introduction
3	-- <i>Wolbachia</i> Identification
4	-- <i>Wolbachia</i> Naming
5	-- <i>Wolbachia</i> Supergroups
6	-- Pre-Lab Question
	Lab Activity
7	-- Activity 1: <i>Wolbachia</i> Discovery
8	-- Activity 2: <i>Wolbachia</i> Naming



Content is made available under the Creative Commons Attribution-NonCommercial-No Derivatives International License. Contact (wolbachiaproject@vanderbilt.edu) if you would like to make adaptations for distribution beyond the classroom.



The *Wolbachia* Project: Discover the Microbes Within! was developed by a collaboration of scientists, educators, and outreach specialists. It is directed by the Bordenstein Lab at Vanderbilt University.
<https://www.vanderbilt.edu/wolbachiaproject>

Wolbachia Identification

Wolbachia is a bacterial genus that was first identified in 1924 by entomology student Marshall Hertig and his advisor, S. Burt Wolbach, as *Rickettsia*-like microorganisms that infect insects (Hertig & Wolbach, 1924). In 1936, Hertig officially proposed the name *Wolbachia pipientis* because it was found to be present in every germ cell of both male and female *Culex pipiens* mosquitoes throughout all stages of development (Hertig, 1936). It has since been detected in numerous arthropods (including insects, spiders, mites, and crustaceans), filarial nematodes, and plant-parasitic nematodes. *Wolbachia* are obligate intracellular endosymbionts, meaning they live within the cells of other organisms. Unlike free-living bacteria, such as *E. coli*, they cannot be cultured on a petri dish or studied in cell-free media. In order to determine morphology and distinguishing characteristics, scientists rely on tools such as transmission electron microscopy (Fig 5.1), scanning electron microscopy (Fig 5.2) and, most commonly, DNA sequencing and genetic analysis.

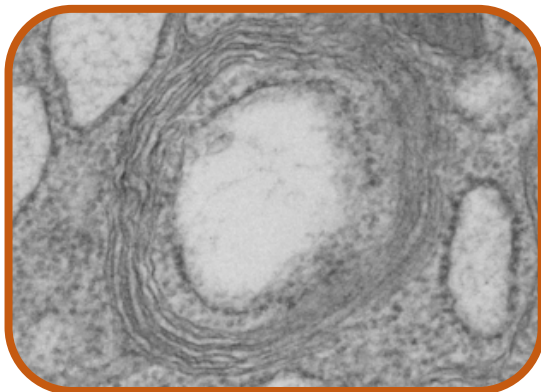


Figure 5.1. Transmission electron micrograph shows a single *Wolbachia* cell enclosed by multiple eukaryotic-derived membranes within an insect host.

Image credit: Sarah Bordenstein

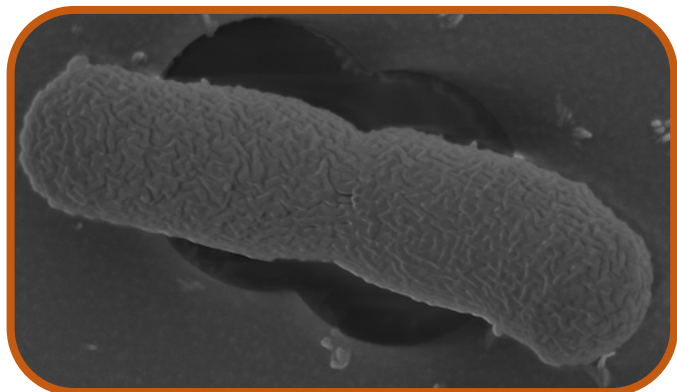


Figure 5.2. Scanning electron micrograph shows a *Wolbachia* cell, purified from an insect host, that is in the process of dividing.

Image credit: Dennis Kunkel and Sarah Bordenstein

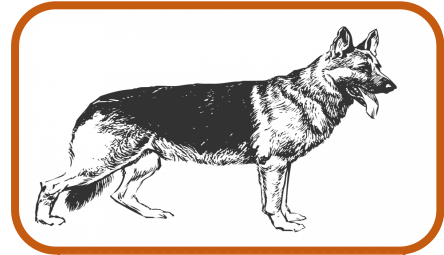
One of the most widespread genetic tools to identify *Wolbachia* is the **16S rRNA gene** marker. This phylogenetic marker is commonly used to identify bacteria at the species level and to differentiate between closely related species. While 16S rRNA provides an introductory level of classification, additional genes such as *wsp* and a set of multilocus sequence typing (MLST) genes - *ftsZ*, *gatB*, *coxA*, *hcpA*, and *fbpA* - have also been used to further resolve evolutionary relationships.

References

- Hertig, M., & Wolbach, S. B. (1924). Studies on Rickettsia-Like Micro-Organisms in Insects. *The Journal of Medical Research*, 44(3), 329–374.7.
- Hertig, M. (1936). The Rickettsia, *Wolbachia pipientis* (gen. et sp.n.) and Associated Inclusions of the Mosquito, *Culex pipiens*. *Parasitology*, 28(4), 453-486.

Wolbachia Naming

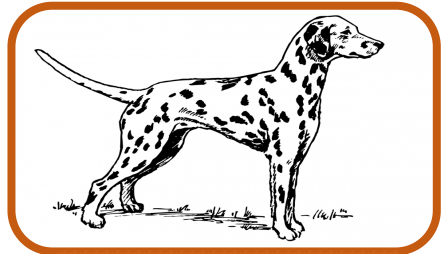
As discussed in Lab 1, the Linnean system of taxonomy classifies all organisms into genus and species. Beyond this, many species are further classified into subcategories. Using domestic dogs as an analogy, we know that they are all classified as one taxonomic species - *Canis familiaris* - yet there are dramatic differences between a German Shepherd and a Dalmatian (Fig 5.3). Society therefore categorizes domestic dogs into breeds. If you've ever watched an AKC dog show, you'll notice that individual breeds can also be organized based on the historical work associated with each type: sporting group, hound group, working group, terrier group, toy group, herd group, and non-sporting group.



Canis familiaris
Breed: German Shepherd
Group: Herding group

Wolbachia are currently classified into one species: *Wolbachia pipientis*. Within this species designation, they are further categorized into **strains**. Strains are generally written as a lower-case *w* (to indicate *Wolbachia*) followed by a two to three letter abbreviation of the host species. The first letter following *w* is always capitalized. Below, the three letters are derived from just the species name.

- *wMel* is the *Wolbachia* endosymbiont of *Drosophila melanogaster*
- *wKue* is the *Wolbachia* endosymbiont of *Ephesttia kuehniella*
- *wMeg* is the *Wolbachia* endosymbiont of *Chrysomya megacephala*



Canis familiaris
Breed: Dalmatian
Group: Non-sporting group

Figure 5.3

Alternatively, the capitalized letter may refer to genus and the following letters identify the species.

- *wCle* is the *Wolbachia* endosymbiont of *Cimex lectularius*
- *wBm* is the *Wolbachia* endosymbiont of *Brugia malayi*
- *wOv* is the *Wolbachia* endosymbiont of *Onchocerca volvulus*

In many cases, multiple *Wolbachia* strains might be associated with a single host species. Rather than have *wSim1* and *wSim2* for *Wolbachia* endosymbionts of *Drosophila simulans*, for example, standardized strain designations can be replaced by an abbreviation for the geographic location of its host.

- *wRi* is the *Wolbachia* endosymbiont of *Drosophila simulans* from Riverside, CA
- *wAu* is the *Wolbachia* endosymbiont of *Drosophila simulans* from Australia

While both strains infect *Drosophila simulans* and share high genetic similarity, it is important to differentiate between the two because *wRi* induces cytoplasmic incompatibility whereas *wAu* is not associated with a reproductive phenotype in its host.

In addition, abbreviated descriptors might be added to the end of a strain name.

- *wCobs-BR* is the *Wolbachia* endosymbiont of *Cardiocondyla obscurior* from Brazil
- *wCobs-JP* is the *Wolbachia* endosymbiont of *Cardiocondyla obscurior* from Japan

Wolbachia Supergroups

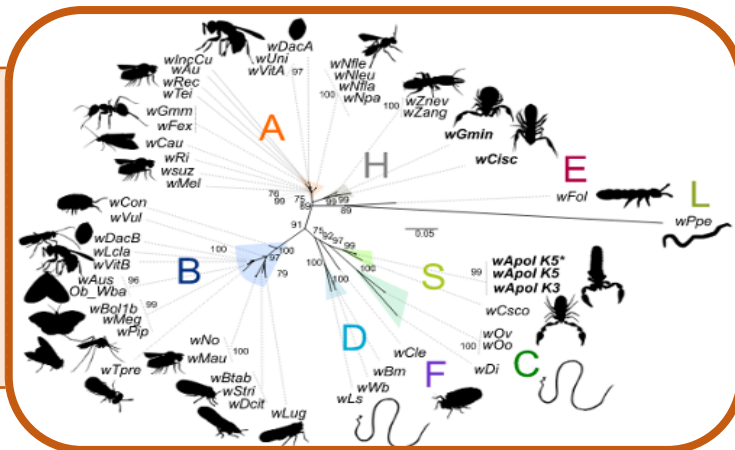
In 1998, **Supergroups** were proposed in order to group genetically related strains of *Wolbachia* (Zhou et al., 1998). The designation often, but not always, correlates with host type. The first described Supergroups A and B are associated with arthropods whereas Supergroups C and D are associated with filarial nematodes; Supergroup E has only been described in springtails; Supergroup F is found in both termites and filarial nematodes; and so on. Because different *Wolbachia* strains can co-infect the same host, Supergroup designations are often added to the end of the strain name:

- wVitA is the Supergroup A-*Wolbachia* endosymbiont of *Nasonia vitripennis*
- wVitB is the Supergroup B-*Wolbachia* endosymbiont of *Nasonia vitripennis*
- wAlbA is the Supergroup A-*Wolbachia* endosymbiont of *Aedes albopictus*
- wAlbB is the Supergroup B-*Wolbachia* endosymbiont of *Aedes albopictus*
- wCauA is the Supergroup A-*Wolbachia* endosymbiont of *Cadra cautella*
- wCauB is the Supergroup B-*Wolbachia* endosymbiont of *Cadra cautella*

Figure 5.4. Unrooted phylogenetic tree of *Wolbachia*

Supergroups based on 2 genetic markers, *ftsZ* and *coxA*.

Image credit:
Lefoulon et al., 2020



Supergroups were originally based on DNA sequence homology of the *wsp* (*Wolbachia* surface protein) gene and have since been expanded to encompass multi-locus phylogenies, where a phylogenetic tree is constructed from more than one genetic marker (Fig 5.4). Using multiple markers across the genome allows for resolution of closely related species and helps to delineate Supergroups. For the purpose of this lab activity, we will construct a tree based solely on a short segment of the **16S rRNA gene** marker.

Pros: This method is easy and affordable. For less than \$5 per sequence, we can determine a *putative* Supergroup designation. A phylogenetic tree of one gene can be created using freely available software with no required background experience in bioinformatics.

Cons: Using only a small segment (i.e., about 300-400 bp) of a single 16S rRNA gene (>1,400 bp) may not resolve closely related strains and/or clearly differentiate between some *Wolbachia* Supergroups. More advanced phylogenomic assays (involving genome data and evolutionary reconstructions) may be required to definitively identify proper grouping.

References

- Lefoulon, E., Clark, T., Borveto, F. et al. (2020). *Pseudoscorpion Wolbachia* symbionts: diversity and evidence for a new supergroup S. *BMC Microbiol* **20**, 188.
- Zhou, W., Rousset, F., & O'Neil, S. (1998). Phylogeny and PCR-based classification of *Wolbachia* strains using *wsp* gene sequences. *Proceedings. Biological Sciences*, **265**(1395), 509–515.

Pre-Lab Question

Complete the following table to match each *Wolbachia* strain name to the corresponding host species.

wAlbB
wAna_India
wAu
wBif
wBt

wCauA
wCauB
wFex
wKue
wMel

wNfe
wNfla
wPipJHB
wRec
wVitA

Host species (<i>Wolbachia</i> Supergroup)	<i>Wolbachia</i> strain name
<i>Drosophila recens</i>	
<i>Drosophila bifasciata</i>	
<i>Drosophila melanogaster</i>	
<i>Cadra cautella</i> (Supergroup A)	
<i>Cadra cautella</i> (Supergroup B)	
<i>Bemisia tabaci</i>	
<i>Nomada ferruginata</i>	
<i>Nomada flava</i>	
<i>Culex pipiens Johannesburg</i>	
<i>Ephestia kuehniella</i>	
<i>Drosophila simulans</i> from Australia	
<i>Drosophila ananassae</i> from India	
<i>Aedes albopictus</i> (Supergroup B)	
<i>Formica exsecta</i>	
<i>Nasonia vitripennis</i> (Supergroup A)	

Lab Activity 1: *Wolbachia* Discovery

Lab Pre-requisite - Before beginning this lab, complete the following modules:

- Bioinformatics I: Sanger Sequencing Analysis
- Bioinformatics II: NCBI Taxonomy & BLAST Searching

If your arthropod did not have a *Wolbachia* infection, select one of the “Example *Wolbachia* Sequences” from Module III:

<https://www.vanderbilt.edu/wolbachiaproject/lab-5-dna-sequences>

The goal of this activity is to assess your *Wolbachia* discovery in context of previous research. Follow the steps below to see if *Wolbachia* has been identified in your arthropod(s).

Wolbachia Project Database

- Open a browser window and go to: <https://wolbachiaprojectdb.org/>
- Select ‘Database >> Browse by Taxonomy’ from the navigation menu.
- Scroll through the available taxa – is yours listed?

1. Is your arthropod (or a closely related species) represented in the *Wolbachia* Project Database? If so, how do your results compare to previous results?

NCBI

- Open a browser window and go to: <https://www.ncbi.nlm.nih.gov/taxonomy>
- Enter *Wolbachia* in the top Taxonomy search bar and select Search.
- Select *Wolbachia*.
- Scroll through the alphabetized list to see if *Wolbachia* has been described in your arthropod.
- *Optional* - If your arthropod is present, click on the link. The taxonomy page links all NCBI records (see upper right-hand corner for nucleotide and protein links).

2. Is *Wolbachia* listed for your arthropod?

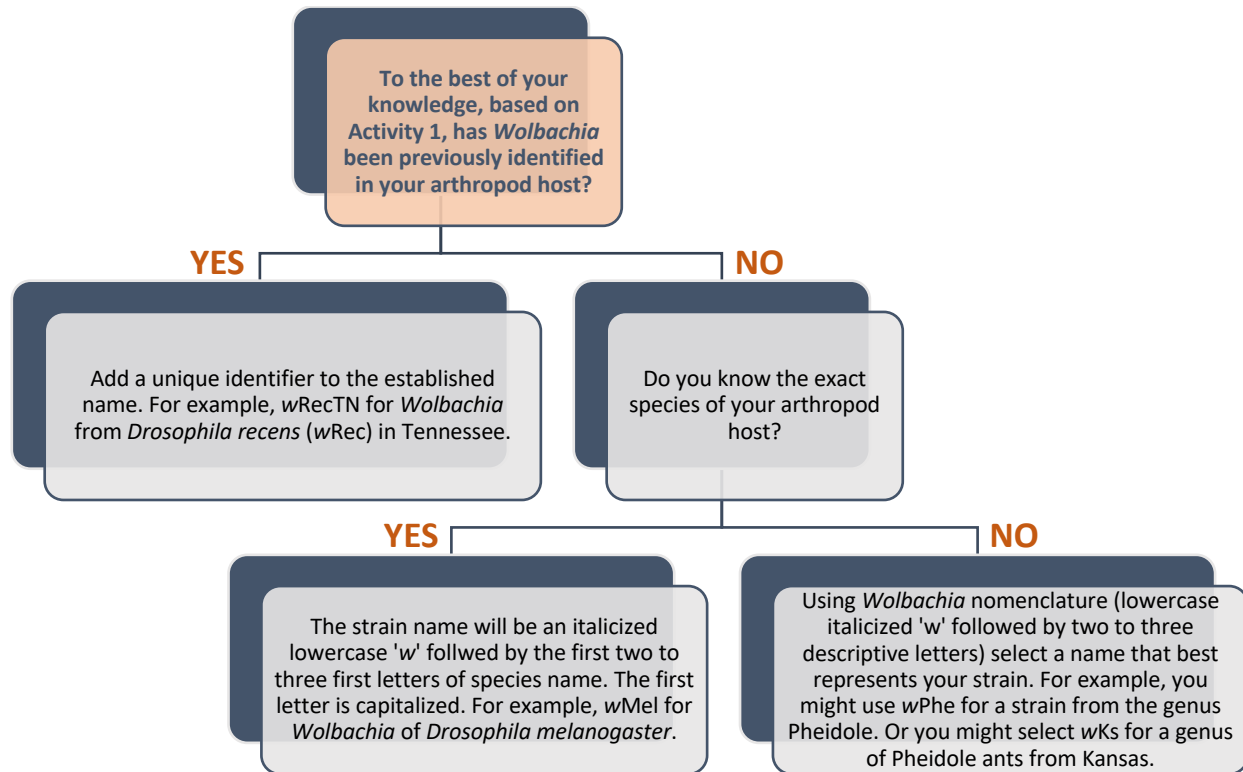
Google Scholar

- Open a browser window and go to: <https://scholar.google.com>
- In the search bar, enter *Wolbachia* and your arthropod name. This will provide a list of journal articles and books that discuss your arthropod. Be careful, some papers report negative (uninfected) data. To the best of your ability, scroll through the article to determine status.

3. Has anyone previously detected *Wolbachia* in your arthropod?

Lab Activity 2: *Wolbachia* Naming

The goal of this activity is to follow standard *Wolbachia* nomenclature in order to name your strain. This name will be used as the taxon label for phylogenetic trees. Refer to page 5 for more information.



1. What is your *Wolbachia* strain name? _____
2. Open a browser window and search for “*Wolbachia* wXXX” (insert strain name). Has this name already been used?
3. If your name has already been used by scientists, revise the name by adding a descriptor at the end of the strain. For example, if your name is *wSim* (for *Wolbachia* of *Drosophila simulans*) and you collected the fly from the city of Forest Hills, you might use *wSimFH* (for *Wolbachia* of *Drosophila simulans* from Forest Hills).

It is very possible that your *Wolbachia* strain could be identical to one that has already been described. Unfortunately, we are not able to conclusively assess *exact* genomic identity with just a partial 16S rRNA sequence. More detailed analyses, such as genome sequencing, are required. However, contributing the 16S rRNA sequence will inform scientists about the strain infecting your particular arthropod.