

A detailed line drawing of a Gothic-style building tower, likely a church or university building, featuring intricate tracery and multiple levels of arched windows. The drawing is positioned on the left side of the slide, partially overlapping a gold diagonal shape.

RESEARCH, INNOVATION, AND PARTNERSHIPS

Padma Raghavan

Vice Provost for Research

Professor of Computer Science and Engineering

VANDERBILT  UNIVERSITY

Office of the Provost

WELCOME!



VANDERBILT
UNIVERSITY

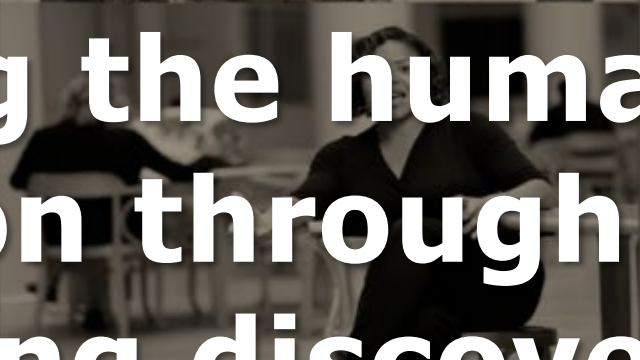
Office of the Provost



COLLABORATIVE

ALWAYS GROWING

ONE COMMUNITY



Improving the human condition through pathbreaking discovery, innovation, and partnerships.



DISCOVERY

IMPACT

INNOVATION

JOURNEYS

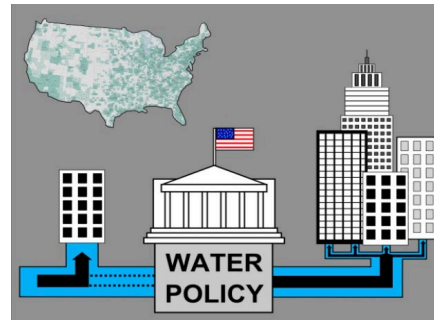
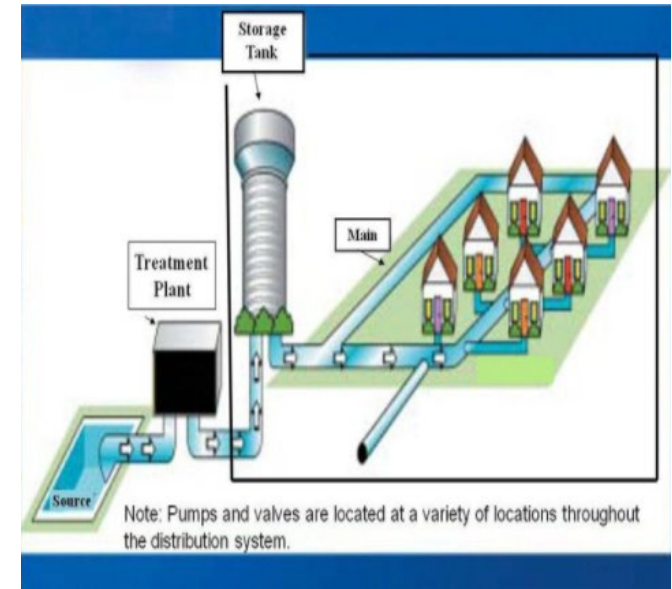


Joining, Growing, Building



VANDERBILT
UNIVERSITY

| Office of the Provost



Yolanda McDonald

Assistant Professor of Human and Organizational Development
Peabody College

Yolanda describes herself as a “medical geographer”: Her research uses geospatial approaches to investigate health outcomes and disparities, tackling issues from preventing cervical cancer to fighting for drinking water justice. Yolanda is now helping chart a new path for Vanderbilt as member of the Climate, Environment, and Energy Futures Working Group.





Karl Zelik

Associate Professor of Mechanical Engineering and Biomedical Engineering
School of Engineering

Assistant Professor of Physical Medicine and Rehabilitation
School of Medicine Clinical Sciences

Karl runs the Biomechanics & Assistive Technology (BAT) Lab and is the CSO of HeroWear, a new venture founded on his lift-assist exosuit. This year, Karl became the first awardee in Pathfinder, Vanderbilt's partnership with the Army Futures Command and the University of Tennessee system, for his Soldier Assistive Bionic Exosuit for Resupply (SABER).

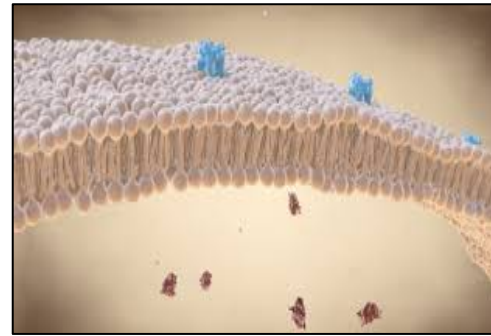
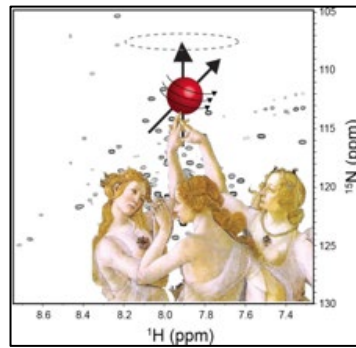




Elizabeth Zechmeister
 Cornelius Vanderbilt Professor of Political Science
 Director, Latin American Public Opinion Project (LAPOP)
 College of Arts and Science

Liz is a member of the VU Research Council and leads a team of ~38 student, post-doc and staff at LAPOP. LAPOP conducts Americas Barometer, a public opinion survey on democracy covering 34 countries supported by USAID, that has been cited everywhere from the United Nations to the 2021 Ecuadorian presidential elections.





Charles Sanders

Associate Dean for Research

Professor of Biochemistry and Medicine

Aileen M. Lange & Annie Mary Lyle Chair in Cardiovascular Research

School of Medicine Basic Sciences and School of Medicine Clinical Sciences

Chuck's research team examines how defects in membrane proteins contribute to human disease, including his current project on treatments for Charcot-Marie-Tooth disease that was just accepted into Ancora, Vanderbilt's partnership with Deerfield. He also helped bring in-person research back to campus during COVID through the Research Ramp-up Working Group, is a member of the VU Research Council.



One Vanderbilt

with hundreds of research projects involving VU/VUMC collaboration



\$825 million

in VU/VUMC research expenditures in FY2020



35+ student-led startups

launched in recent 5 years



Ranked in the

Top 15

Reuters Most Innovative Universities in the U.S.

3 years running

\$11.9 billion

total Vanderbilt economic impact from operations, student and visitor spending and construction



~40 faculty-led startups

launched in recent 5 years



2,118

proposals submitted to external sponsors in FY2021



Look out for a welcome research event coming in

October 2021

Q&A



VANDERBILT
UNIVERSITY

Office of the Provost

Q: I need help developing and submitting my first proposal at VU. Who can I go to for help?



Joanne Spitz

Director of Research Development

A: Reach out to Joanne Spitz and our team in Research Development and Support. They will help you with federal and foundation opportunities, including proposal preparation, building sponsor relationships etc.

Contact Joanne at at joanne.m.spitz@Vanderbilt.edu or the larger RDS team at rds@Vanderbilt.edu.

Q: I'm trying to start a study that involves human subjects. Who can connect me to the right resources to get started?



Liane Moneta-Koehler
*Director of Research
Development and Support*

A: Liane Moneta-Koehler and her team manage compliance functions from export control to coordinating with Vanderbilt's IRB and IACUC to support faculty leading studies with human or animal subjects, respectively.

Contact Liane at liane.monetakoehler@Vanderbilt.edu, the export control team at vec@Vanderbilt.edu, or the larger RDS team at rds@Vanderbilt.edu.

Q: I need to transfer ongoing grants from my previous institution to VU. How do I get started?



David Wright
*Associate Dean for
Research
College of Arts &
Science*



James P. Byrd
*Associate Dean for
Research and
Graduate Education
Divinity School*

A: The associate dean for research in your school or college as well as your department or school grants managers are your first contact for transferring projects from your prior institution.



Ingrid Wuerth
*Associate
Dean for
Research
Law School*



Ellen Goldring
*Associate Dean
for Research
Peabody College*



Peter Cummings
*Associate Dean
for Research
School of
Engineering*

Your next step will be connecting with Sponsored Projects Administration (SPA), the central VU office managing proposal submission, non-financial award set-up, and contract and subaward negotiation and set-up.

Contact SPA at
spa@Vanderbilt.edu.



Chuck Sanders
*Associate Dean
for Research
School of
Medicine
Basic Sciences*



Mariann Piano
*Associate Dean
for Research
School of
Nursing*