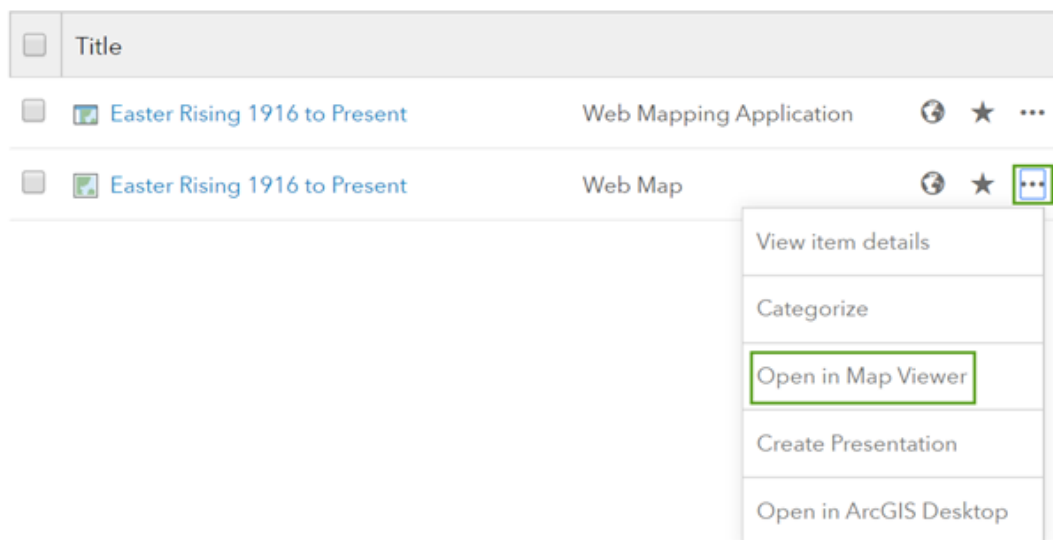


## Create a Story Map Tour

In this lesson, you'll tell some of these narratives by creating a Story Map Tour. This story map will contain geotagged images of historical sites and examples of public commemoration in order to tell the story of the 1916 Easter Rising. Users will be able to explore your narrative, engaging actively with the story of the Easter Rising to reach their own conclusions about the event.

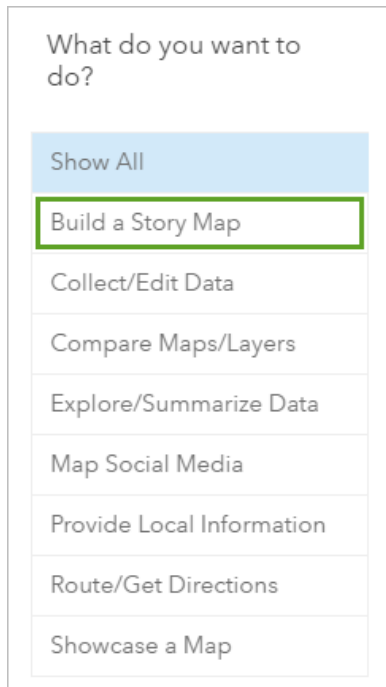
First, you'll open your web map.

1. If necessary, close your web app. Browse to your **Content** page.
2. Next to your Easter Rising 1916 to Present web map (not the web mapping application), click the three horizontal dots and choose **Open in Map Viewer**.

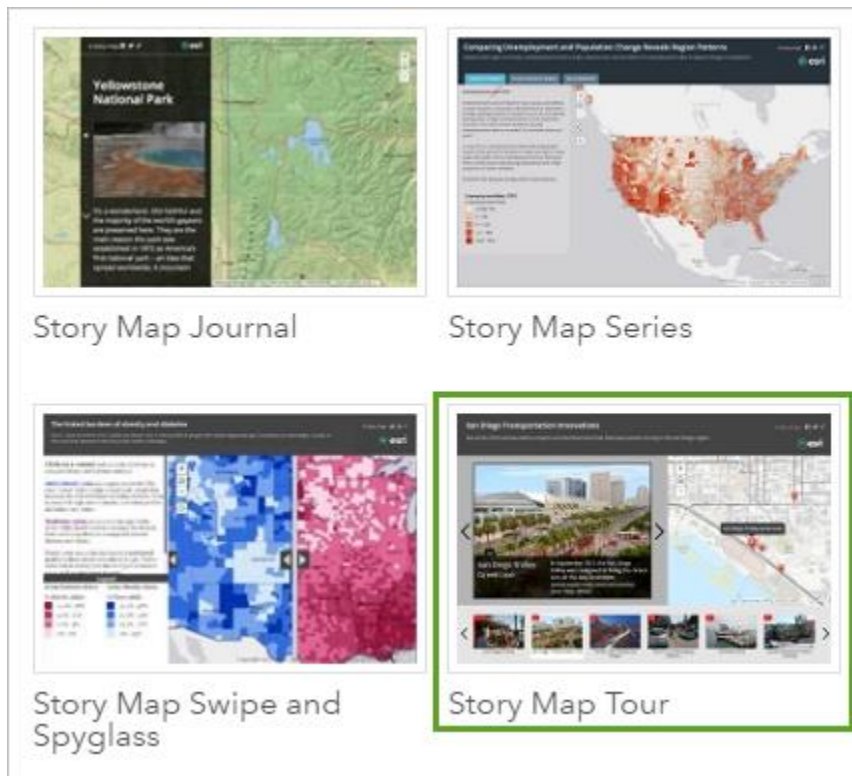


Your web map opens. You'll access the list of web map and story map templates through the **Share** window.

3. On the ribbon, click **Share**. In the **Share** window, click **Create a Web App**.
4. In the **Create a New Web App** window, click the **Build a Story Map** tab.



5. Scroll through the list of templates and click **Story Map Tour**.



A pane opens with an explanation about the Story Map Tour template.

6. Click **Create Web App**.

7. In the **Create a New Web App** window, change the title to Easter Rising 1916 Commemoration. Leave the tags unchanged.
8. For the summary, type Map of Dublin, Ireland, showing the locations of fatalities during the 1916 Easter Rising, images of present day sites, and exhibitions of public commemoration.
9. Click **Done**.

The Map Tour Builder opens. Currently, you have no images to use in your story map, so you'll create an empty layer to which you can later add your images. (Later, you'll be provided with images to use.)

10. Under **I need to upload my images**, click the ArcGIS icon.

## Where are your images or videos?

They are already online



I need to upload my images



[Learn more](#)

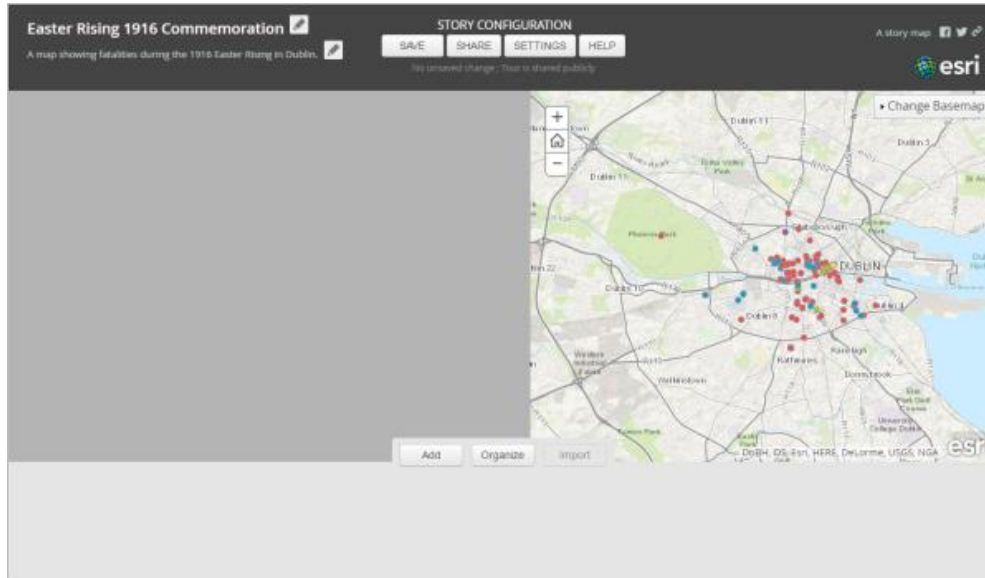
The **Create hosted Map Tour layer** window opens. The layer you create will have no points until you upload images to it. For now, you'll choose the layer's name.

11. For **Layer name**, type Easter Rising Images. To make the layer name unique, add your name or initials to the end.

Layer name:	<input type="text" value="Easter Rising Images"/>
Folder:	<input type="text" value="Root"/>

The default folder where the layer will be saved is the root folder. This folder is fine, but if you have other folders, you can change the location.

## 12. Click **Create the layer**.



Click **Cancel** in the **Add a new tour point** window to get to the **Story Configuration** window.

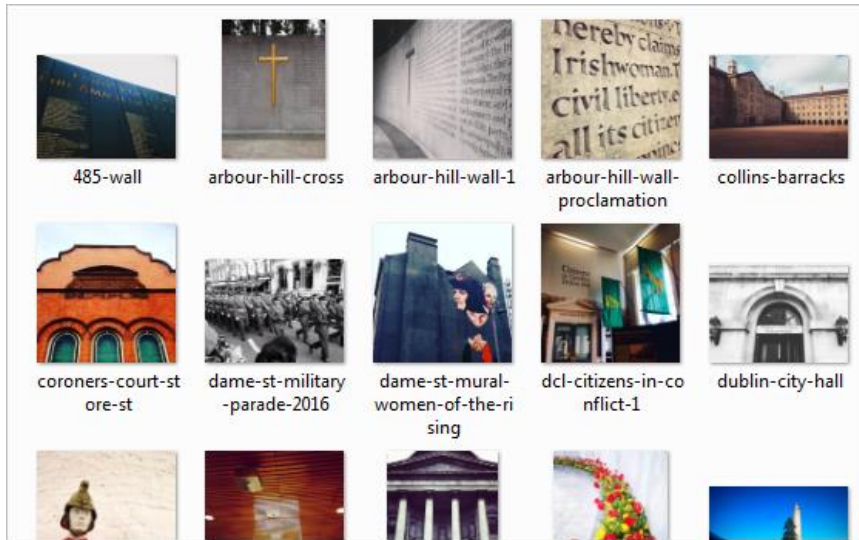
### Upload photographs

Your story map currently contains your web map with fatalities, but little else. Next, you'll upload photographs of historic locations and commemorative sites around Dublin to the Story Map layer you created when you began the story map. For the purposes of this lesson, you'll be provided with images to use.

1. Download the [Dublin Images](http://downloads.esri.com/learnarcgis/tell-the-story-of-irish-public-history/dublin%20images.zip) zipped file. Extract the file folder to a location you can easily access.

<http://downloads.esri.com/learnarcgis/tell-the-story-of-irish-public-history/dublin%20images.zip>

2. Open the folder on your computer and take a look at the images inside.



The images, 43 in total, show a wide variety of historic locations around Dublin. Normally, you would have to take your own images or find them online. These images were taken by the author of the lesson. Unless you're very familiar with Dublin's contemporary and historical geography, however, you may not know what all of these images depict or their significance to the 1916 Easter Rising. Additionally, you don't know where in Dublin to geotag each image. You'll download a spreadsheet of information about the images to help you.

3. Download the [Dublin Images Information](#) spreadsheet. (Alternatively, you can consult this [text file](#) with the same information.)

<https://www.arcgis.com/apps/MapTour/index.html?appid=427a69a14dcb469ebd5cc6efd915018>

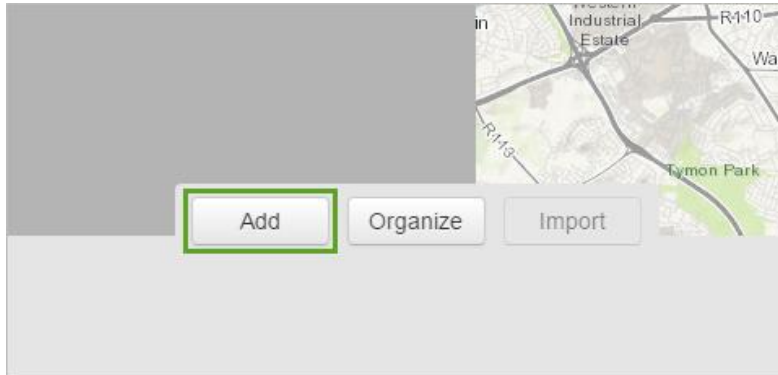
4. Open the spreadsheet.

	A	B	C	D	E	F
1	IMAGE	NAME	DESCRIPTION	LOCATION	LATITUDE	LONGITUDE
1		arbour-hill-wall-1	Memorial wall in the yard of Arbour Hill Prison, the burial place of 14 rebel leaders.	Arbour Hill Cemetery, Arbour Hill, Dublin 7, Ireland	53.351016	-6.287227
2		arbour-hill-wall-proclamation	Memorial wall engraved with the Proclamation of the Irish Republic in the yard of Arbour Hill Prison. Designed and engraved by Michael Biggs, completed in 1964.	Arbour Hill Cemetery, Arbour Hill, Dublin 7, Ireland	53.350993	-6.287322
3		arbour-hill-cross	Gold cross at the centre of the Arbour Hill Memorial wall. The Proclamation of the Irish Republic engraved in English (left) and Irish (right).	Arbour Hill Cemetery, Arbour Hill, Dublin 7, Ireland	53.351067	-6.287269
4		glasnevin-cemetery	Glasnevin Cemetery and Museum.	Glasnevin Cemetery and Museum, Finglas Road, Glasnevin, Dublin 11, Ireland	53.370541	-6.276939
5		glasnevin-museum	Research area, basement of Glasnevin Museum. Thom's Almanac and Official Directory 1917, used to cross-reference	Glasnevin Cemetery and	53.370541	-6.276939

Should the images be arranged geographically or thematically? Perhaps they should be arranged in a way to present a certain narrative or understanding of the Easter Rising.

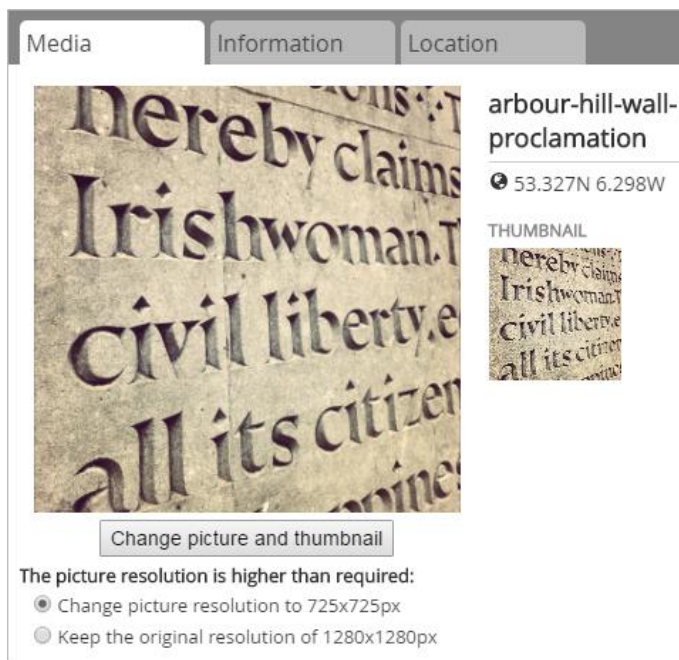
Just as if you were writing a historical story or essay, you should outline or storyboard your content before creating your story map.

5. Take some time to plan which images you'll include in your story map and in what order they'll appear.
6. When you've decided on your images, return to your story map. Click **Add**.



The **Add a new tour point** window opens. This window creates a point in the story map layer you created earlier based on an image and information that you specify.

7. On the **Media** tab, click **Select or drop picture**. Browse to the Dublin Images folder and choose the first image that you want to appear in your story map.

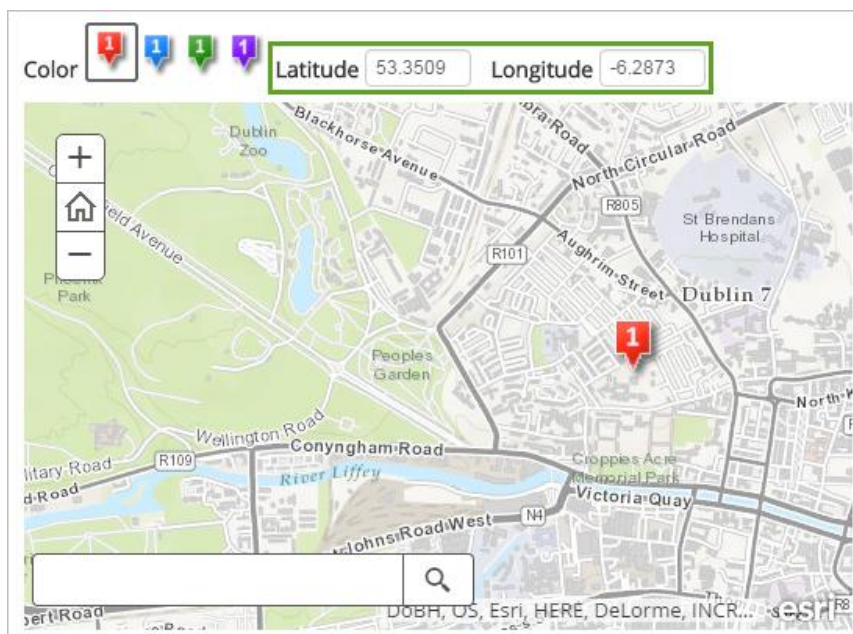


The image and its thumbnail are added to the window.

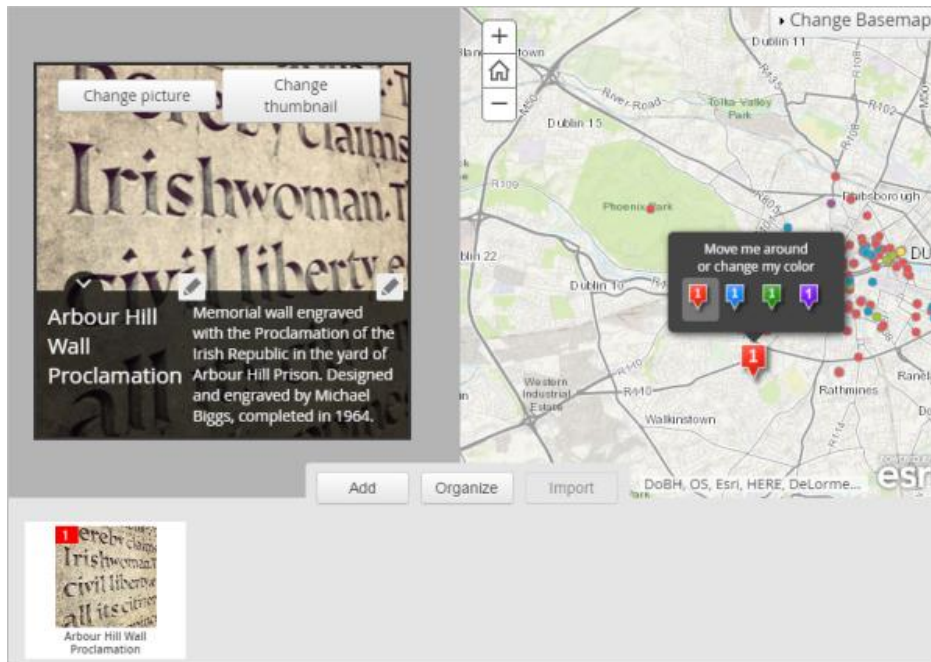
- If necessary, select **Change picture resolution to 725x725px**.
- Click the **Information** tab. For **Name**, give the image a name based on its content (or base it on the file name). For **Caption**, copy and paste the description of the image in the Dublin Images Information spreadsheet.

<b>Name</b>
<input type="text" value="Arbour Hill Wall Proclamation"/>
<b>Caption</b>
<input type="text" value="Memorial wall engraved with the Proclamation of the Irish Republic in the yard of Arbour Hill Prison. Designed and engraved by Michael Biggs, completed in 1964."/>

- Click the **Location** tab. Add the latitude and longitude values from the Dublin Images Information spreadsheet and press Enter.



- Click **Add Tour Point**.

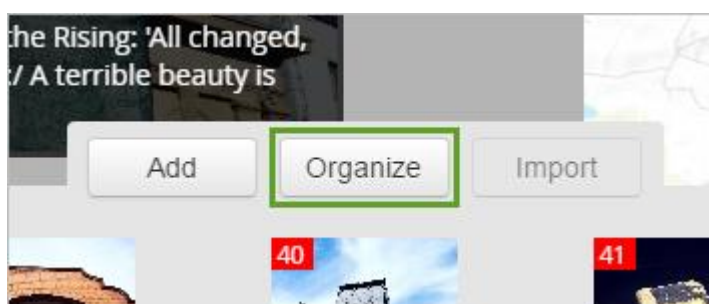


The tour point is added to the map. A thumbnail appears in the bar at the bottom of the screen, and the image, title, and description appear to the left of the map. You can edit the title or description by clicking the pencil icons to the upper right of each field.

12. Follow the plan you made earlier to add the rest of the images to the story map in the correct order.

Once you finish adding images, you can rearrange their order if you'd like.

13. Click **Organize**.



The **Organize the tour** window opens. You can use this window to drag tour points into a new order. Additionally, you can also choose to make the first tour point an introduction. Doing so will remove the image from the carousel of images and instead use it as title page for your story map.

14. If you'd like, reorder your tour points or use your first point as an introduction. Click **Apply**.



You can also change some basic settings about your story map, such as its layout and color scheme.

15. Click **Settings**.



16. Change settings as you see fit to best represent your story.

17. When you're finished changing settings, click **Apply**.

Your story map is now complete. You'll save it before sharing it with others.

18. Click **Save**. Then, click **Share**.

The **Share your Tour** window opens. The window informs you that your tour has already been shared publicly (it was shared the same way as your original web map). The window provides a URL to your story map that you can copy and paste to show others.

*Lesson Adapted from ESRI's Lesson Gallery and Charles Travis and Hannah Smyth. The Easter Rising fatalities were compiled by Hannah Smyth in conjunction with Conor Dodd and Isobel Leo of the [Glasvenin Trust](#).*