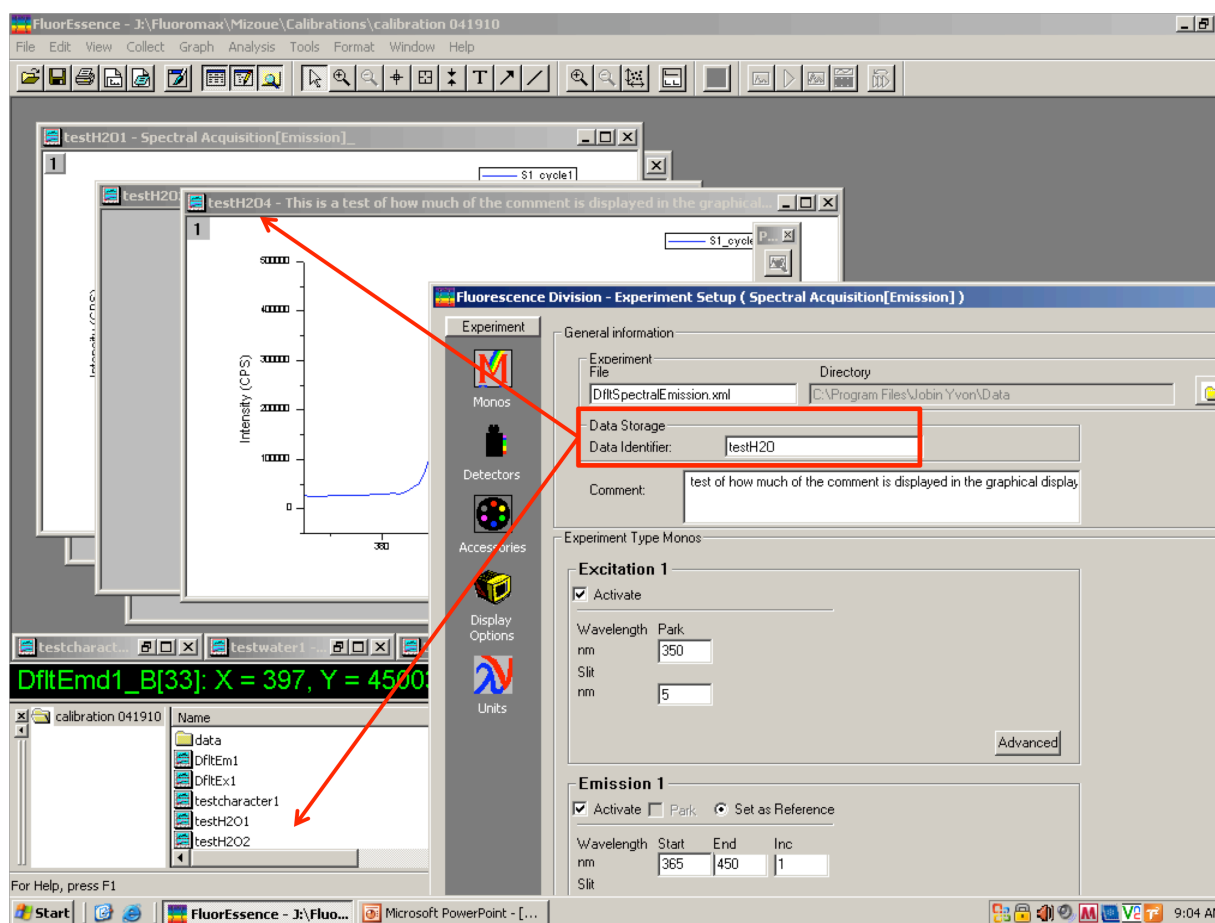


Naming Conventions within FluorEssence

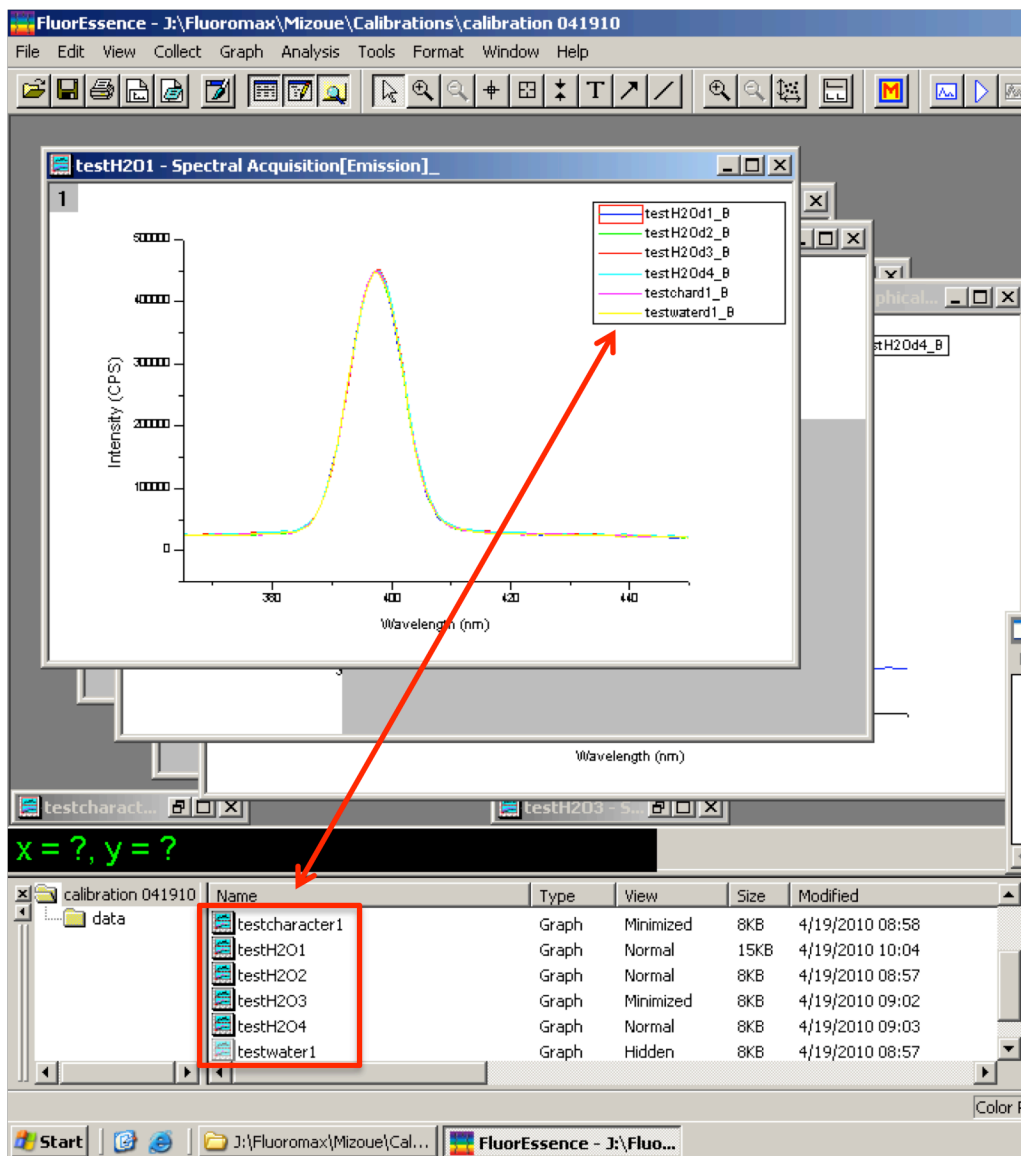
FluorEssence allows you to save a whole series of graphs as a single project (.opj) file. The Data Storage Identifier and Comment boxes in the Experimental Setup menu can help you distinguish which graph is which.

You can input a name (up to 13 characters) in the Data Storage Identifier box. This name will show up in your graph title and in the list of graphs. It's best not to end the name with a number because FluorEssence automatically appends a numerical extension to the identifier (i.e. testH2O => testH2O1). If you don't change the name, subsequent experiments will be saved as a series (testH2O1, testH2O2, testH2O3, etc.)



The Data Storage Identifier will also show up in your graph legend, but written in a different format. testH2O1 => testH2Od1_B
testwater => testwaterd1_B

If the Data Storage Identifier name is long, the number of characters will be cut off in the legend. I'm not sure how it decides the cut off. In the example below, testcharacter1 was truncated to testchard1_B (8 characters), but testwater (9 characters) was left unchanged.



In the Experiment Setup menu, you can input a comment that shows up in your graph next to the data storage identifier:

