

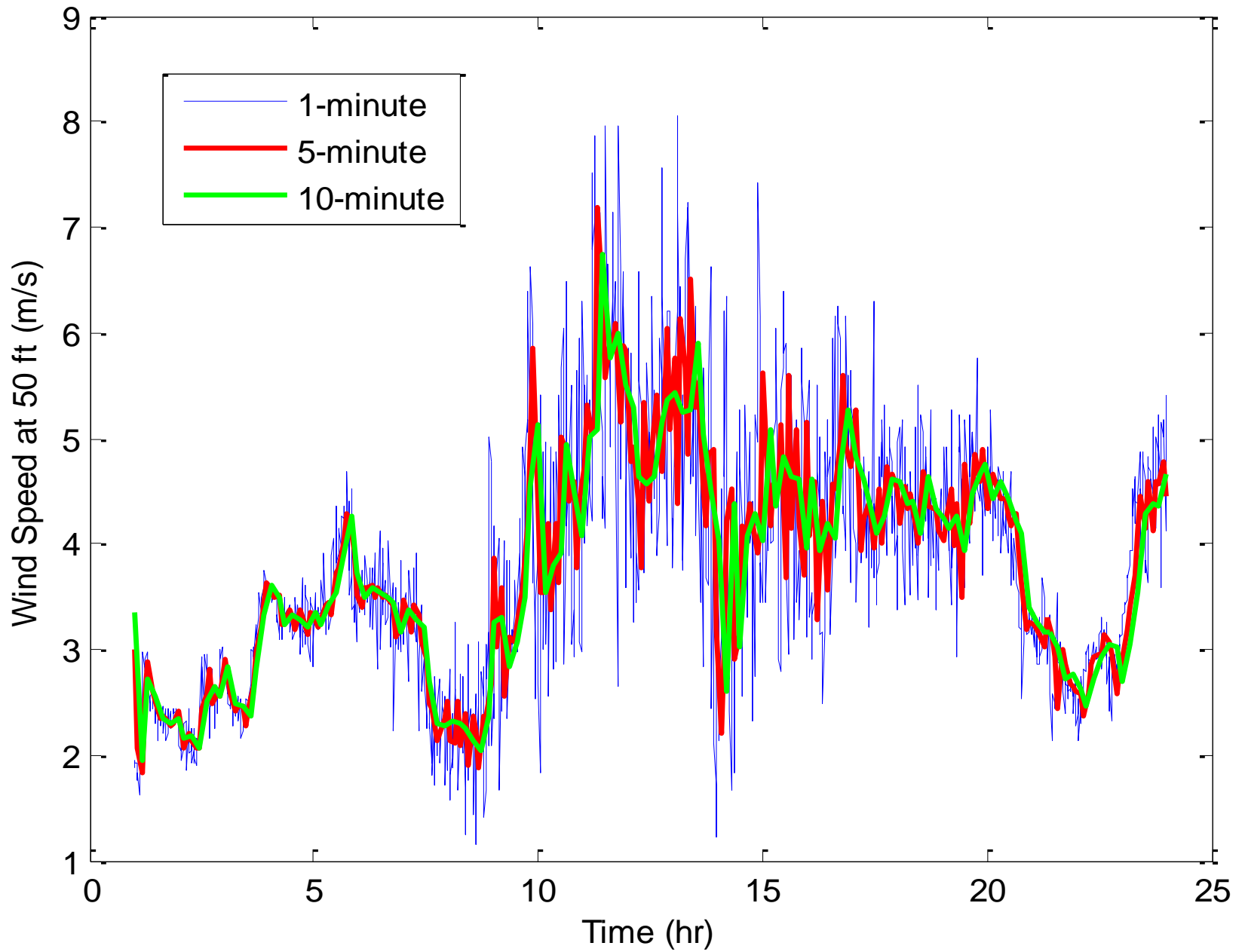
Comprehensive Love Circle Analysis IV

26 December 2012

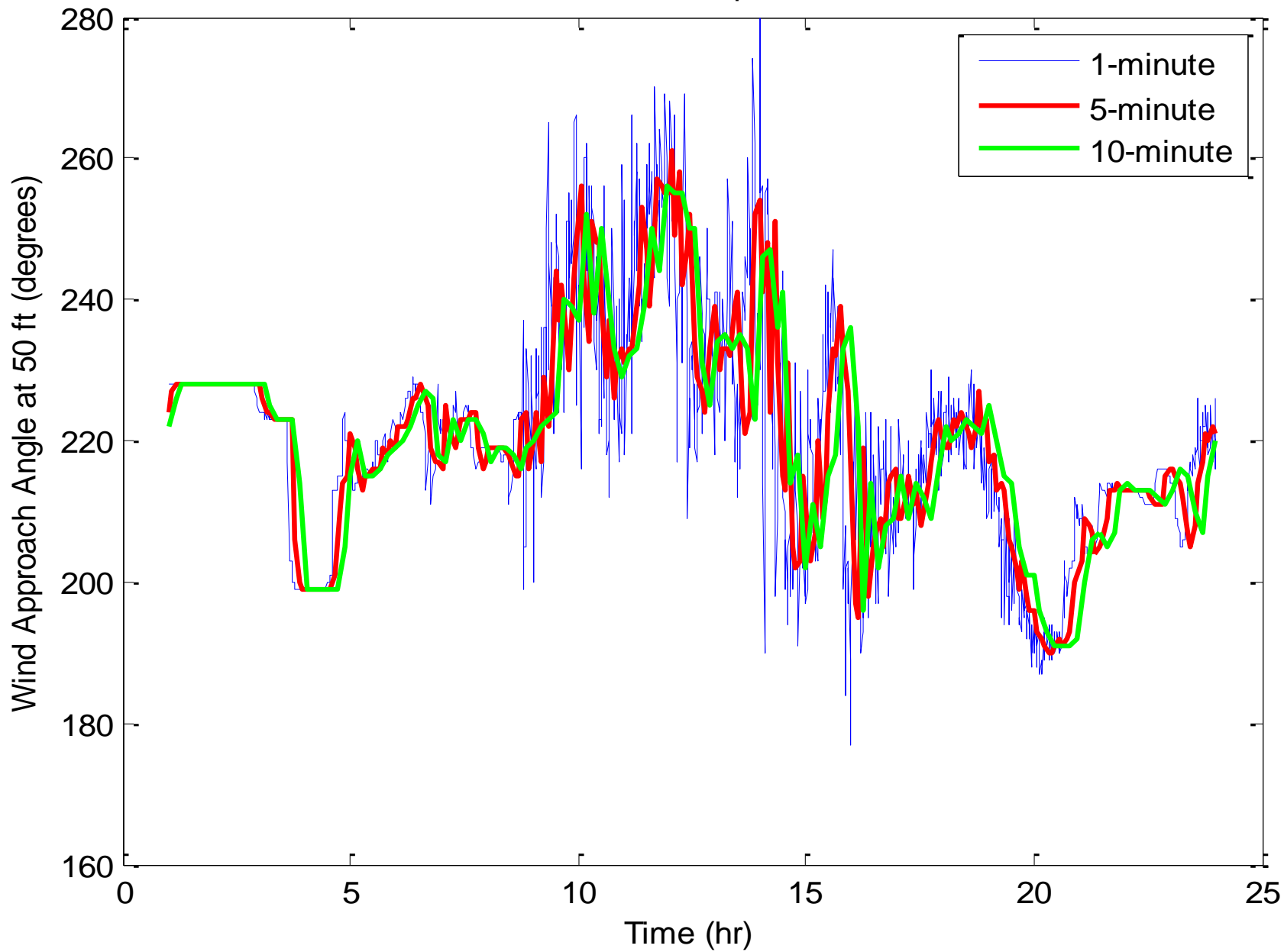


Period	Percent of Data Retained After Removing:			
	Velocity = 0	Velocity < 1.5 m/s	> 30° Spread	Alpha < 0.1
Jan 12 1st Half	84.6%	79.2%	72.4%	71.2%
Jan 12 2nd Half	30.3%	28.9%	25.5%	24.7%
Feb 11 1st Half	54.0%	45.4%	44.4%	35.7%
Feb 11 2nd Half	82.2%	76.0%	74.9%	68.4%
March 11 1st Half	97.3%	92.1%	88.8%	86.9%
March 11 2nd Half	97.8%	92.8%	89.1%	87.0%
April 11 1st Half	99.1%	95.2%	90.7%	88.6%
April 11 2nd Half	99.8%	97.9%	95.9%	95.9%
May 11 1st Half	99.3%	89.3%	79.6%	79.3%
May 11 2nd Half	99.6%	87.2%	78.2%	78.0%
Jun 11 1st Half	97.9%	76.3%	63.6%	63.2%
Jun 11 2nd Half	99.2%	88.2%	78.0%	77.9%
Jul 10 1st Half	90.6%	76.7%	72.8%	72.2%
Jul 10 2nd Half	93.2%	84.2%	81.3%	81.0%
Aug 10 1st Half	87.6%	71.1%	64.5%	64.0%
Aug 10 2nd Half	90.3%	79.0%	75.3%	75.0%
Sep 10 1st Half	86.0%	75.0%	69.8%	69.4%
Sep 10 2nd Half	90.8%	81.9%	77.7%	77.1%
Oct 10 1st Half	89.4%	76.2%	70.9%	69.8%
Oct 10 2nd Half	92.7%	81.8%	77.6%	76.7%
Nov 10 1st Half	84.0%	71.4%	67.3%	64.2%
Nov 10 2nd Half	94.9%	88.7%	86.3%	84.5%
Dec 10 1st Half	89.5%	79.7%	76.9%	72.6%
Dec 10 2nd Half	79.8%	68.8%	65.2%	58.6%

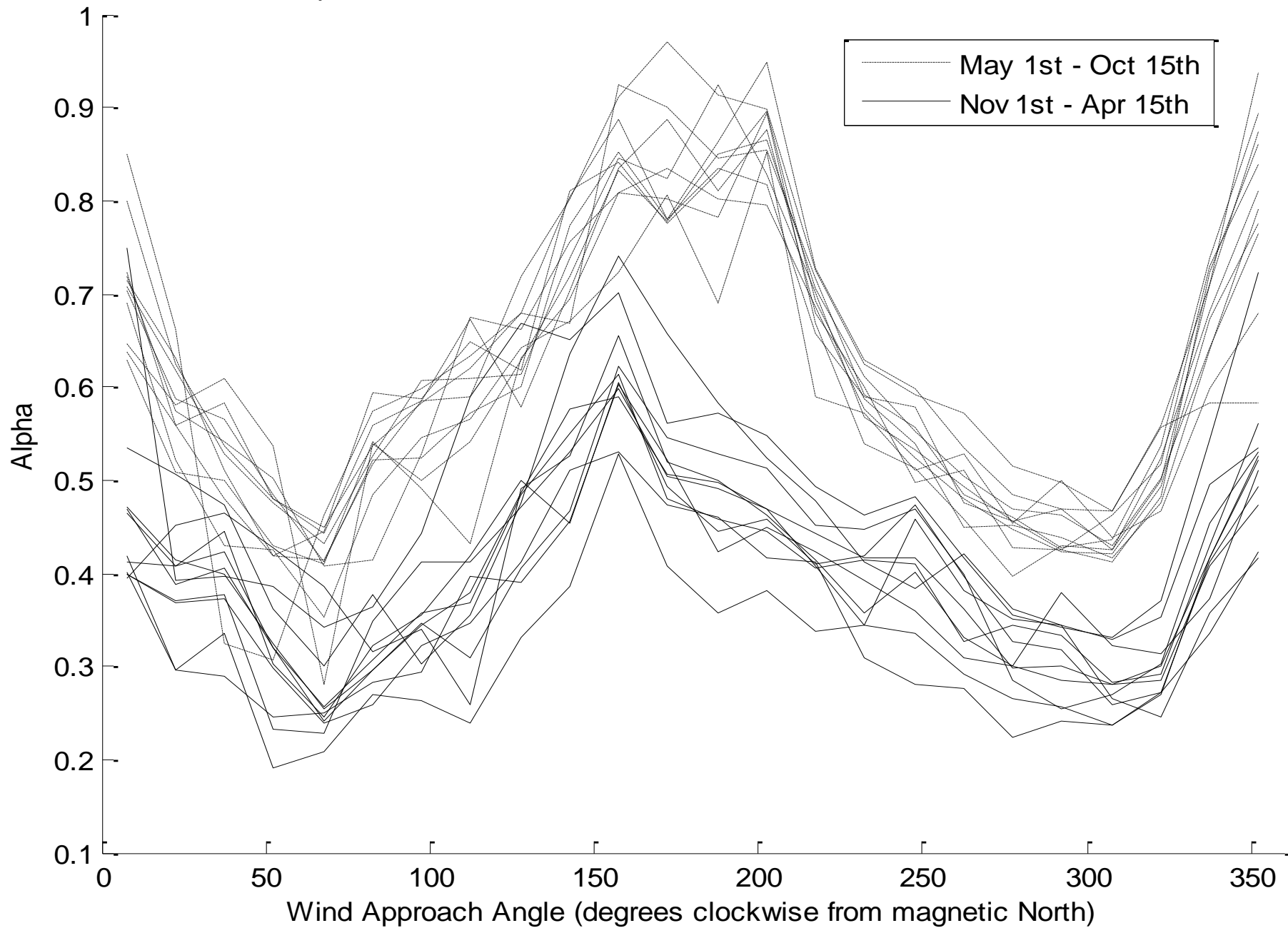
24 Hour Wind Speed Snapshot for Nov. 2, 2011



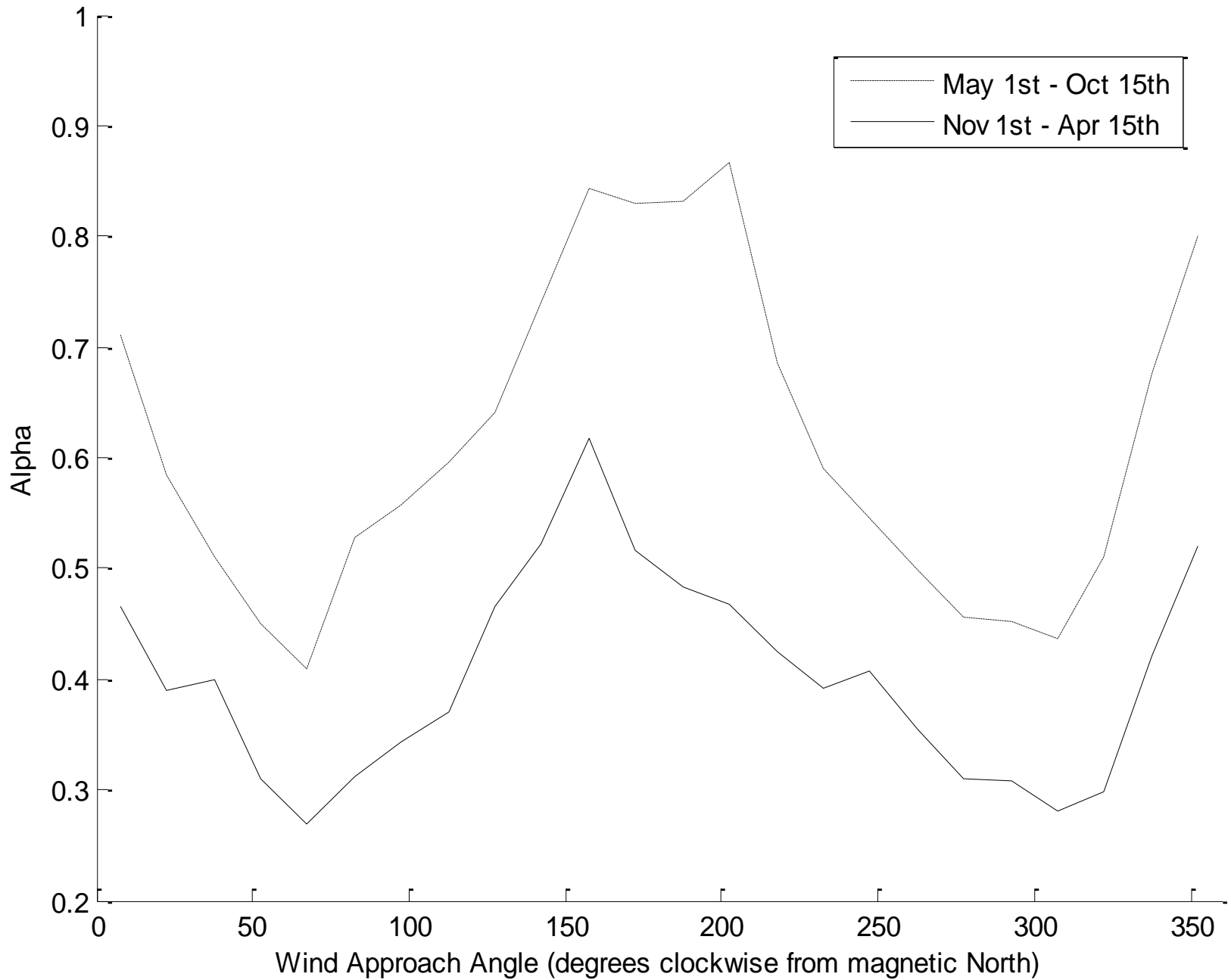
24 Hour Wind Direction Snapshot for Nov. 2, 2011



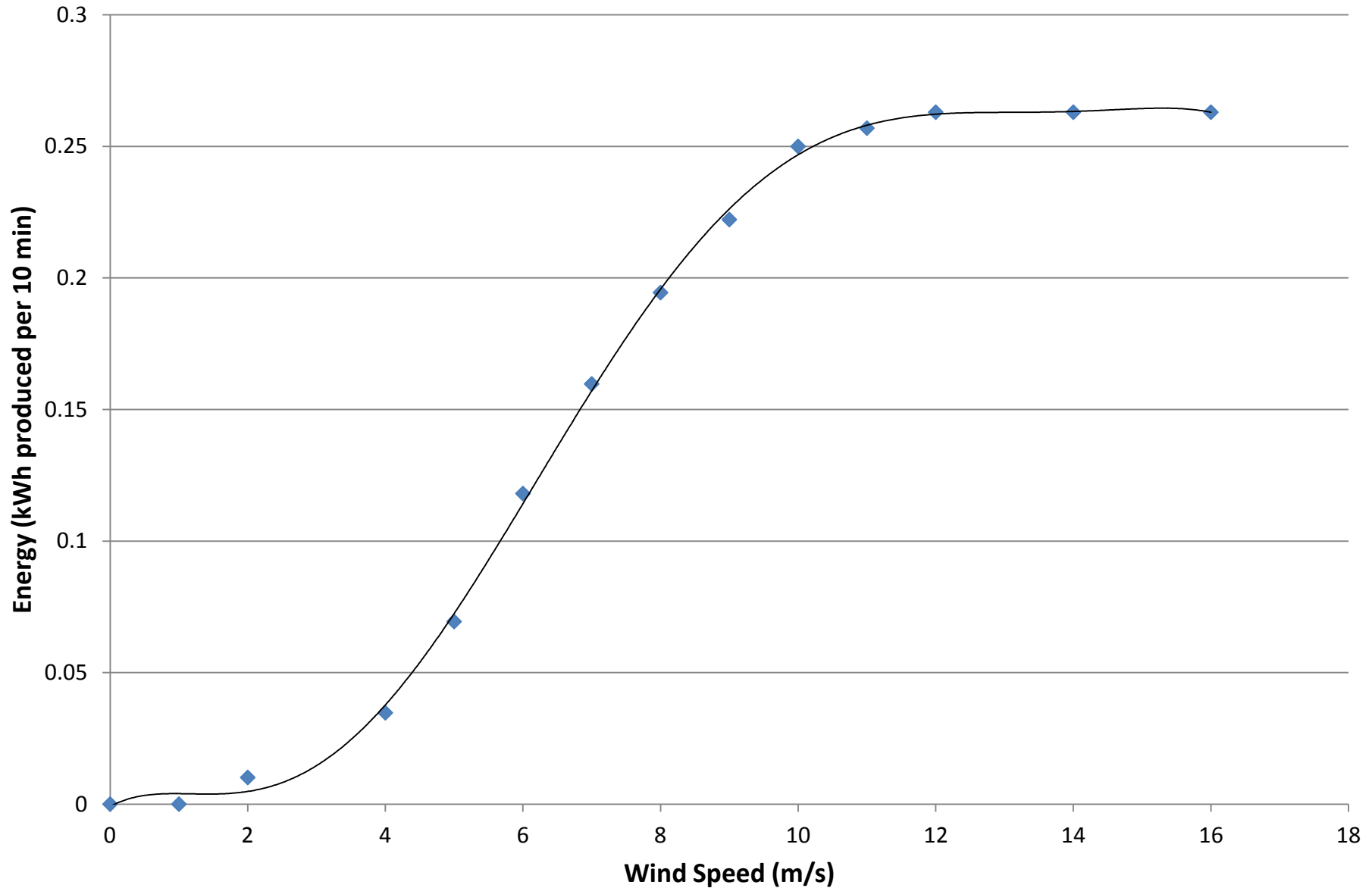
Alpha Variation with Wind Direction at 50 ft for 22* Half-Months



Alpha Variation with Wind Direction at 50 ft for 2 Half-Year* Clusters

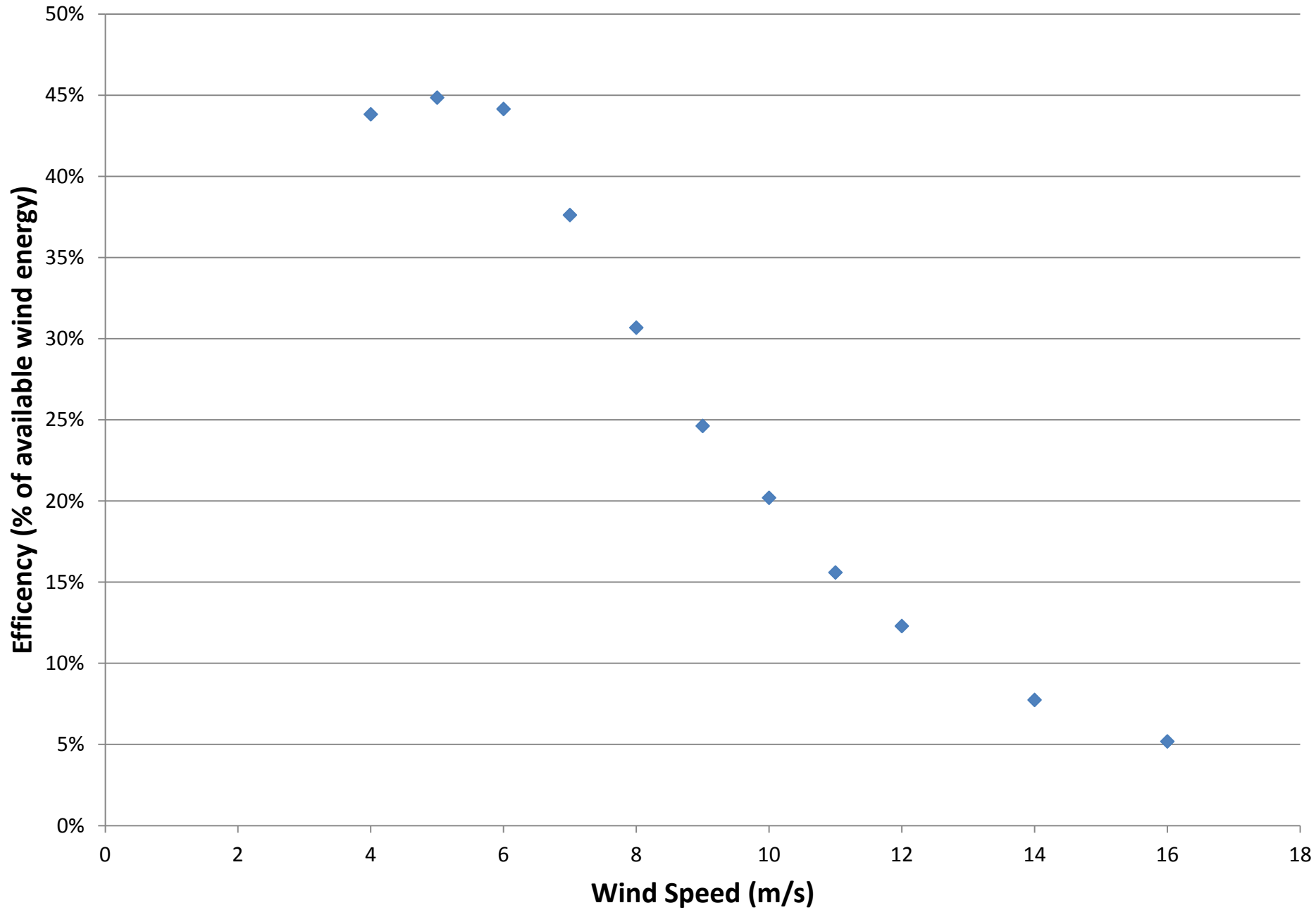


Kestrel Turbine Energy Production Curve



$$y = -6.725E-07x^6 + 3.533E-05x^5 - 6.751E-04x^4 + 5.397E-03x^3 - 1.399E-02x^2 + 1.410E-02x - 8.869E-04$$

Kestrel Turbine Efficiency w/ Windspeed



Period	Available Energy (kWh)	Expected Generation (kWh)	Expected Efficiency
Jan '12 1st Half	293.62	104.53	36%
Jan '12 2nd Half	199.90	66.35	33%
Feb '11 1st Half	133.05	51.02	38%
Feb '11 2nd Half	395.30	126.25	32%
March '11 1st Half	368.85	137.16	37%
March '11 2nd Half	332.44	128.58	39%
April '11 1st Half	613.82	185.35	30%
April '11 2nd Half	513.97	177.82	35%
May '11 1st Half	141.11	59.98	43%
May '11 2nd Half	238.96	85.41	36%
Jun '11 1st Half	59.84	25.08	42%
Jun '11 2nd Half	183.58	75.11	41%
Jul '10 1st Half	84.48	35.74	42%
Jul '10 2nd Half	115.30	49.80	43%
Aug '10 1st Half	51.54	19.39	38%
Aug '10 2nd Half	81.57	35.23	43%
Sep '10 1st Half	80.64	34.19	42%
Sep '10 2nd Half	108.70	46.45	43%
Oct '10 1st Half	101.24	44.39	44%
Oct '10 2nd Half	245.71	85.86	35%
Nov '10 1st Half	106.38	45.18	42%
Nov '10 2nd Half	359.81	125.06	35%
Dec '10 1st Half	313.33	110.36	35%
Dec '10 2nd Half	184.98	70.75	38%