

PEDIATRIC ANTIMICROBIAL STEWARDSHIP IN THE RETAIL HEALTH SETTING



SOPHIE KATZ, MD, CLAY SMITH, MD, GALE THOMAS, RITU BANERJEE, MD, PHD

BACKGROUND

Antibiotic resistance is an emerging public health threat in the United States.

The majority of antibiotic expenditures in the U.S. occur in the outpatient setting.

Nearly 1 in 3 antibiotics prescribed by physicians' offices, emergency departments, and hospital specialty clinics are unnecessary.

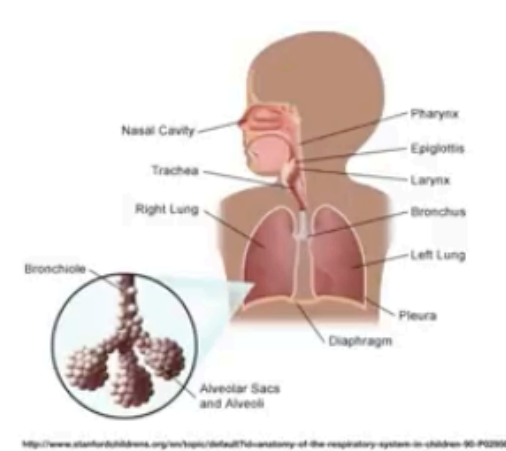
AIMS

1. Identify and disseminate best practice pathways for community acquired pneumonia.
2. Gain hands-on skills in the development of an outpatient antibiotic use dashboard, and use this dashboard to identify targets for future antimicrobial stewardship interventions.
3. Provide feedback about antibiotic use to providers working in the retail health setting.

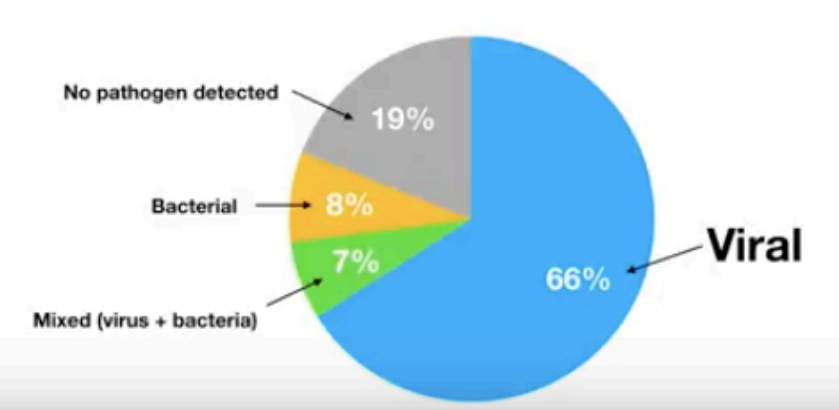
METHODS & ACTIVITIES

- Create an online educational module about diagnosis and management of pediatric community acquired pneumonia.
- Develop an online dashboard for monitoring appropriate pediatric antibiotic use in outpatient clinics associated with Vanderbilt Children's Hospital.
- Participate in VUMC practice-wide antimicrobial stewardship meetings.
- Provide in-person feedback and education regarding antimicrobial use and communication methods at one of the highest-prescribing Vanderbilt Health Clinic at Walgreens (twice weekly for 2 months).
- Develop and present a lecture on outpatient antimicrobial stewardship that applies to a wide variety of practitioners.

Clinical Presentation

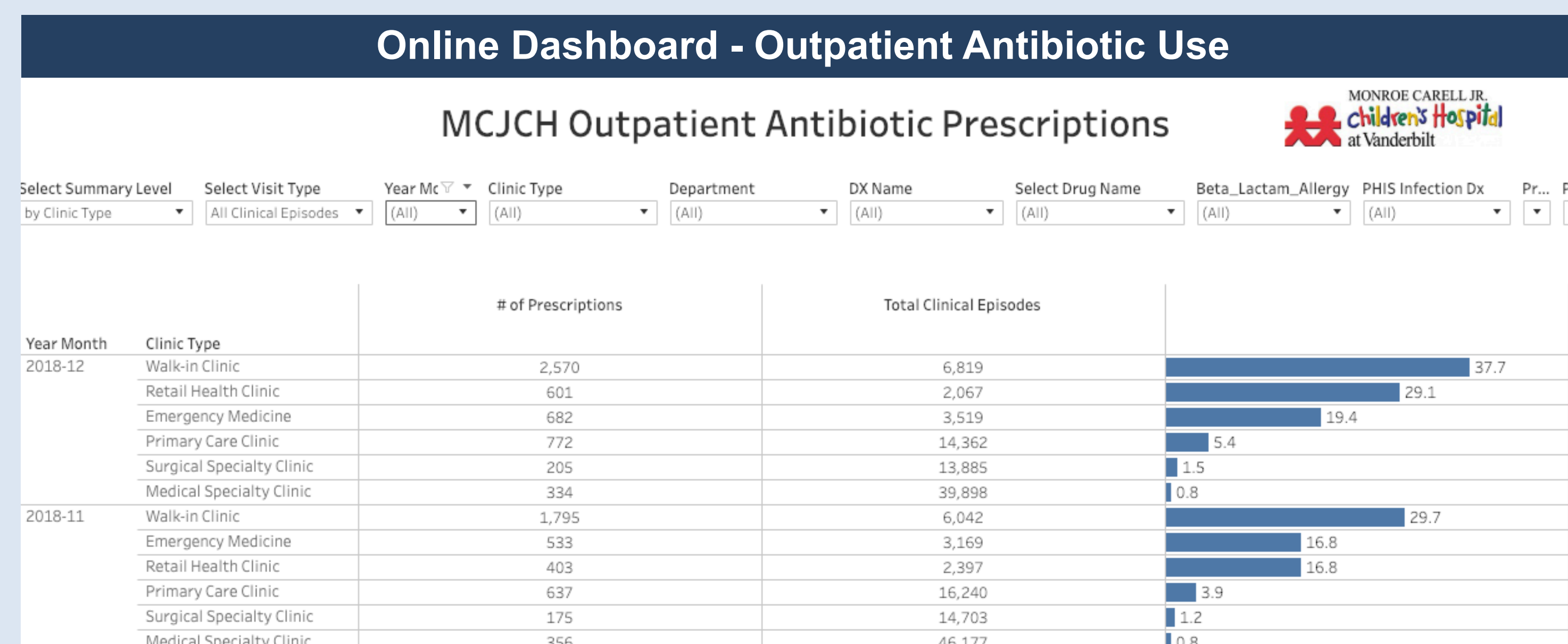


Causes of Pediatric Community-Acquired Pneumonia

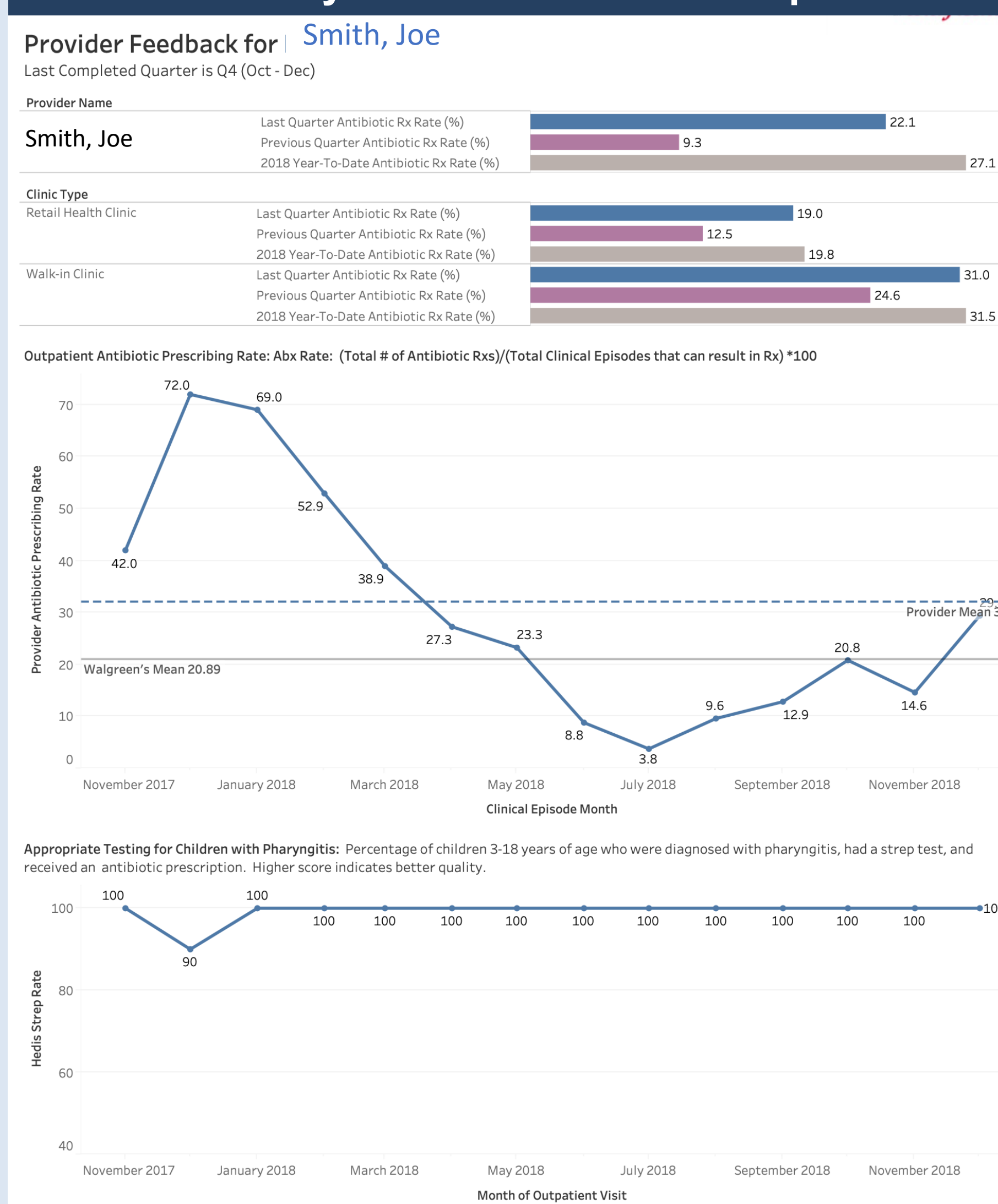


<https://www.youtube.com/watch?v=fZEN3DBISGA>

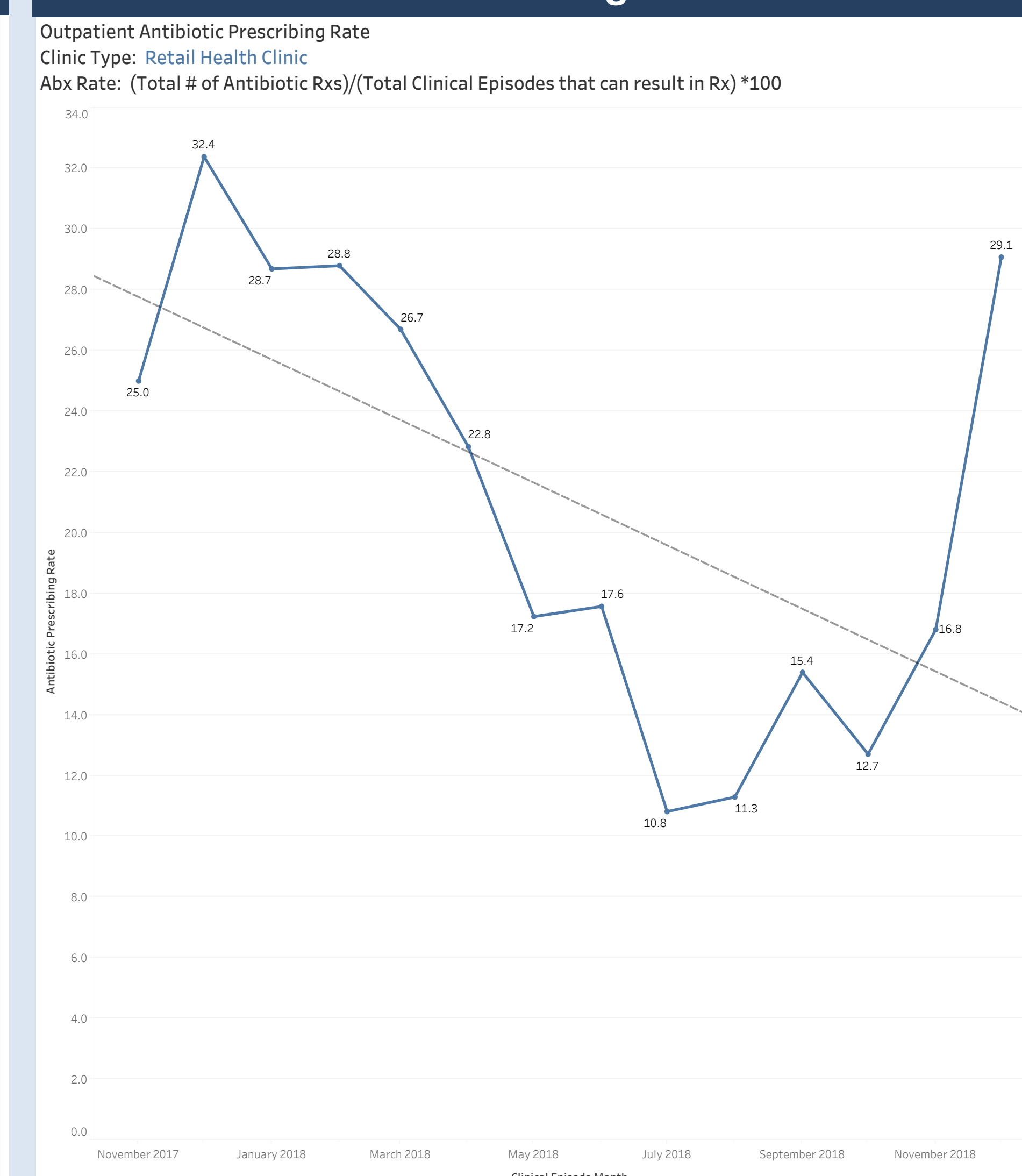
RESULTS



Quarterly Provider Feedback Reports



Antibiotic Prescribing Trend Chart



DISCUSSION & CONCLUSIONS

Lessons Learned:

- Continued audit and feedback is needed to nudge prescribers to optimize their antibiotic prescribing.
- Antibiotic utilization data and stakeholder engagement and buy-in are paramount when designing and implementing antimicrobial stewardship interventions.
- There are effective communication strategies that can help providers avoid unnecessary antibiotic prescribing when they perceive that patients/families desire them.

Next Steps: Using information generated by the online dashboard, we have identified several key target areas to focus when expanding antimicrobial stewardship efforts to the outpatient setting, including walk-in clinics.