

2025 CDB Annual Retreat

Image Competition

Image Competition Single Cells

2025 CDB Annual Retreat

Zachary Lehmann

Tyska lab

Clustering Brush Borders

Actin-supported microvilli beginning to cluster into brush borders on the apical surface of polarizing epithelial cells. Colors represent F-actin labeling encoded by z-axial depth

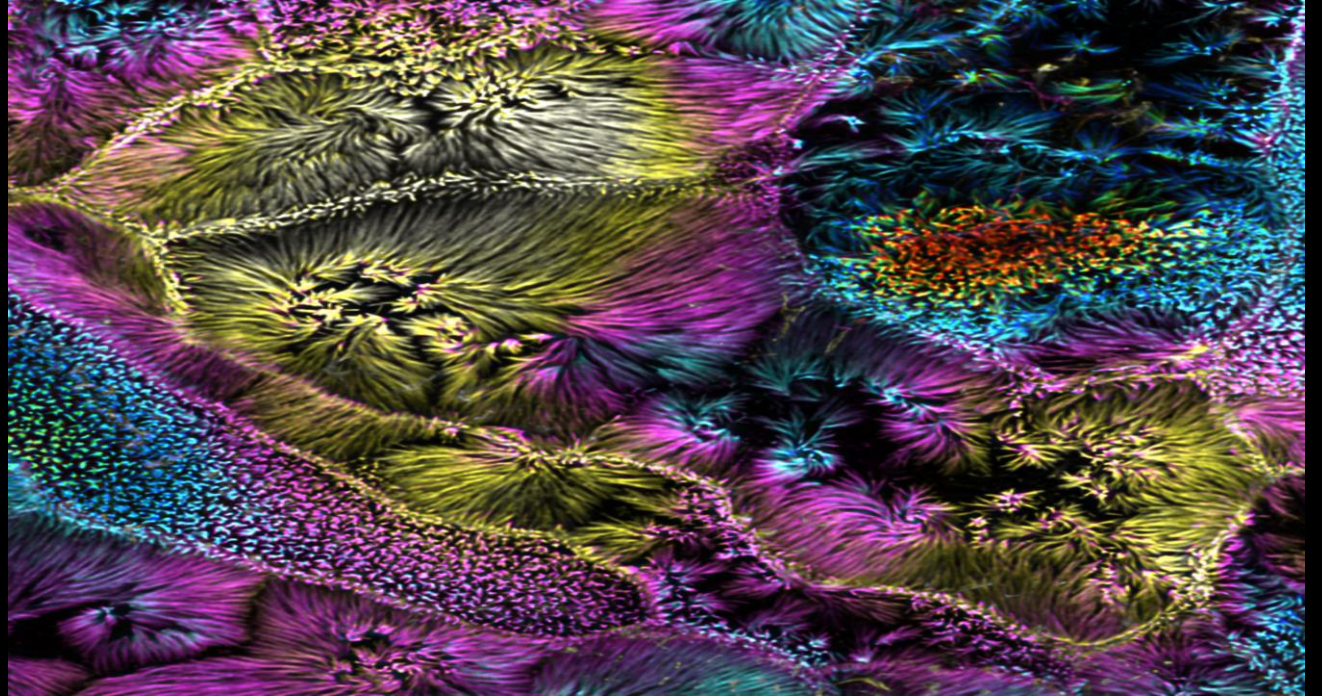


Image Competition Tissues and Organoids

2025 CDB Annual Retreat

Zachary Sanchez

Burnette lab

Frozen Swimming

A marine copepod was stained with Hoechst to label the nuclei (magenta and yellow) and a membrane stain to enhance the autofluorescence of the exoskeleton (blue).

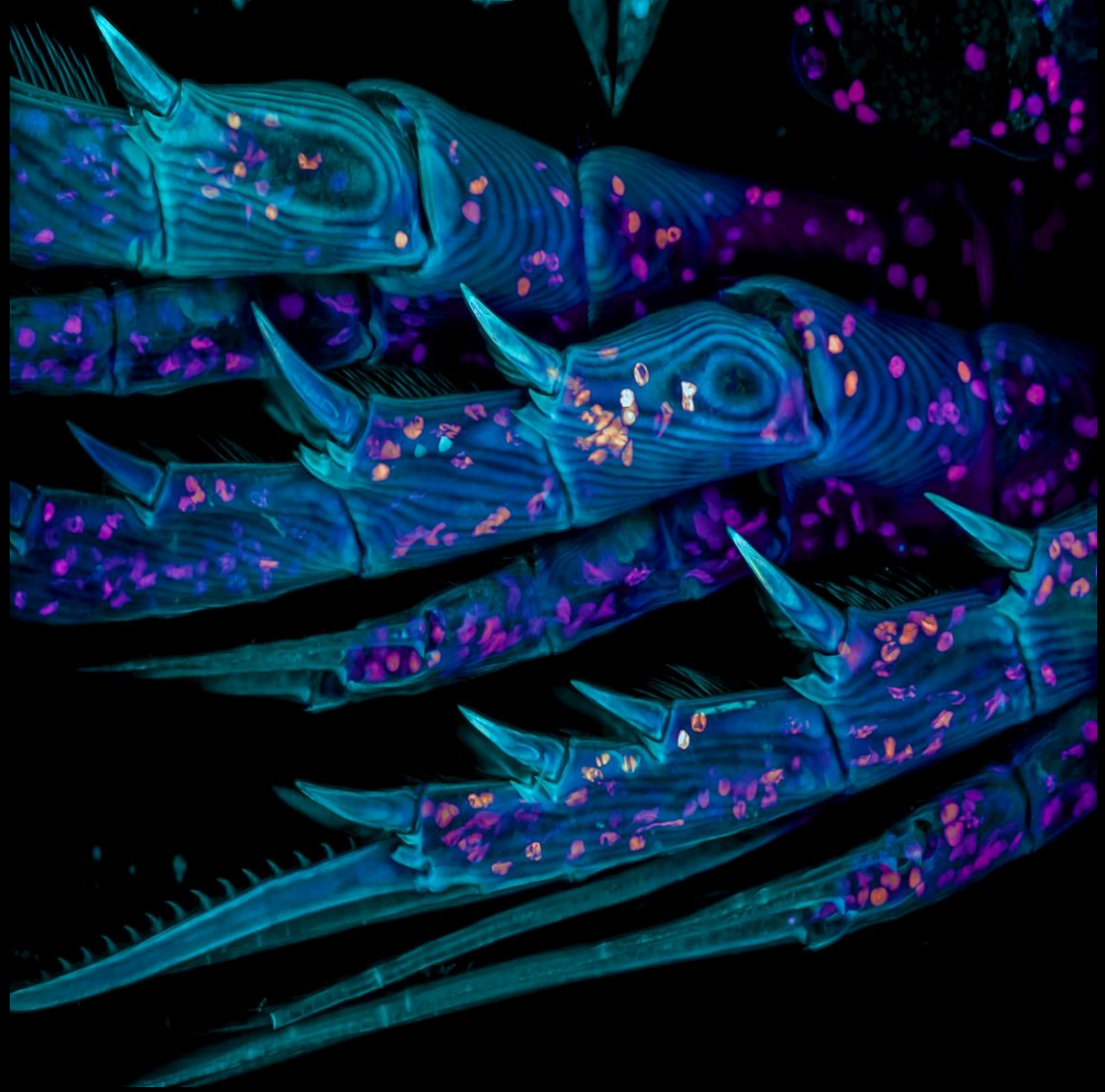


Image Competition Illustrations

2025 CDB Annual Retreat

James Costanzo

Gama lab

The Collision of Neurospheres

Immunofluorescence images were taken at 20X using a spinning disc confocal microscopy of day 100+ neuronal co-cultures. GFAP (an astrocytic marker) is shown in both purple and green, with the image being generated by AI to have neurospheres impact like world's colliding.

